

**IF YOUR ReadyLIFT PRODUCT IS MISSING A PART
OR HAS A DAMAGED PART, PLEASE
CONTACT CUSTOMER SERVICE DIRECTLY.**

A NEW REPLACEMENT PART WILL BE SENT TO YOU IMMEDIATELY

(800)549-4620

MON-FRI 7AM-5PM PST

OR

EMAIL: INFO@ReadyLIFT.COM

WEBSITE: ReadyLIFT.COM

****Please retain this document in your vehicle at all times****

ReadyLIFT Limited Lifetime NO Fine Print Warranty

This unique product warranty proves our commitment to the quality and reliability of every product that ReadyLIFT manufactures. The ReadyLIFT warranty does not include shock absorbers.

The ReadyLIFT product warranty only extends to the original purchaser of any ReadyLIFT product, if it breaks, we will give you a new part. Warranty does not apply to discontinued parts

Product purchased directly from ReadyLIFT has a 30 day return policy on uninstalled products from the date of purchase. Uninstalled product returns must be in the original ReadyLIFT packaging. Please call **800-549-4620** to get an RGA# for any return. Customer is responsible for shipping costs back to ReadyLIFT. **Returns without RGA# will be refused.** Contact ReadyLIFT directly about any potentially defective parts prior to removal from vehicle. If the part in question is deemed warrantable an RGA# will be assigned and can be returned for repair or replacement. Replacement parts required prior to warranty claim completion must be purchased. Upon receipt and verification of deemed warranty parts claim, a credit or refund can then be processed to complete warranty claim transaction.

ReadyLIFT products are **NOT** intended for off-road abuse. Any damage or failure as a result from off-road abuse voids the warranty of the ReadyLIFT product. ReadyLIFT is **NOT** responsible for any subsequent damages to any related vehicle parts due to misuse, abuse, improper installation, or lack of maintenance. Furthermore, ReadyLIFT reserves the right to change, modify or cancel this warranty without prior notice.

www.ReadyLIFT.com

**Please read Instructions thoroughly and completely before beginning installation.
Installation by a certified mechanic is recommended.**

ReadyLIFT Suspension Inc. is NOT responsible for any damage or failure resulting from improper installation.

Safety Warning: Suspension systems or components that enhance the on and off-road performance of your vehicle may cause it to handle differently than it did from the factory. Extreme care must be used to prevent loss of control or vehicle rollover during abrupt maneuvers. Always operate your vehicle at reduced speeds to ensure your ability to control your vehicle under all driving conditions. Failure to drive safely may result in serious injury or death to driver and passengers. Driver and passengers must ALWAYS wear your seat belts, avoid quick sharp turns and other sudden maneuvers. ReadyLIFT Suspension Inc. does not recommend the combined use of suspension lifts, body lifts, or other lifting devices. You should never operate your vehicle under the influence of alcohol or drugs. Constant maintenance is required to keep your vehicle safe. Thoroughly inspect your vehicle before and after every off-road use.

Installation Warning: All steps and procedures described in these instructions were performed while the vehicle was properly supported on a two post vehicle lift with safety jacks. Use caution during all disassembly and assembly steps to insure suspension components are not over extended causing damage to any vehicle components and parts included in this kit. Included instructions are guidelines only for recommended procedures and are not meant to be definitive. Installer is responsible to insure a safe and controllable vehicle after performing modifications.

ReadyLIFT Suspension Inc. recommends the use of an OE Service Manual for model/year of vehicle when disassembly and assembly of factory and related components. Unless otherwise specified, tighten all bolts and fasteners to standard torque specifications listed within the OE Service Manual, or as referenced in the torque specification list provided in these instructions.

Suspension components that use rubber or urethane bushings should be tightened with the vehicle at normal ride height. This will prevent premature wear or failure of the bushing and maintain ride comfort. Larger tire and wheel combinations may increase leverage on suspension, steering, and related components. Due to payload options and initial ride height variances, the amount of lift is a base figure. Final ride height dimensions may vary in accordance to original vehicle ride height. Always measure the vehicle ride height prior to beginning installation.

Vehicle ride height chart

**Driver Front:
Stock height**

Lift installed

**Driver Rear:
Stock height**

Lift installed

**Pass. Front:
Stock height**

Lift installed

**Pass. Rear:
Stock height**

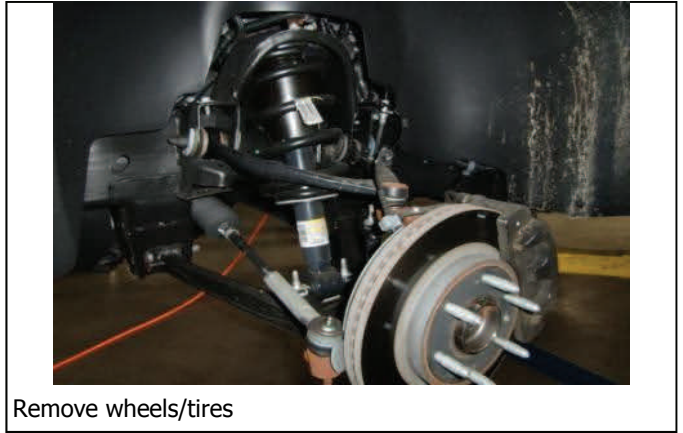
Lift installed

Bolt Size Millimeters	Torque Specs in FT/LB		Bolt Size SAE	Torque Specs in FT/LB	
	Metric Grade 8.8	Metric Grade 10.9		Grade 5	Grade 8
6mm	6	8	5/16	15	20
8mm	16	22	3/8	30	35
10mm	40	45	7/16	45	60
12mm	54	70	1/2	65	90
14mm	89	117	9/16	95	130
16mm	132	175	5/8	135	175
18mm	182	236	3/4	185	280

Installation Instructions (69-3285, 69-3295, 69-3485, 69-3495)



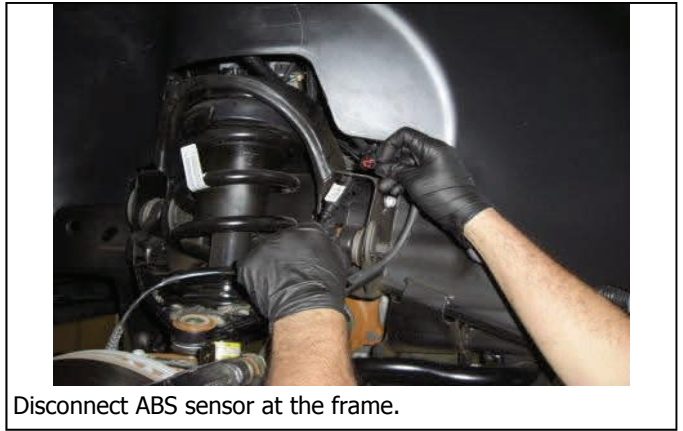
Raise vehicle and support frame with jack stands



Remove wheels/tires



Remove front plastic debris plate.



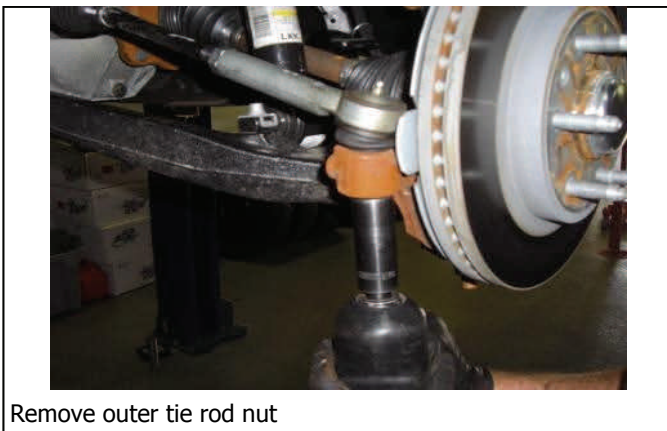
Disconnect ABS sensor at the frame.



Unbolt ABS bracket from upper control arm.



Disconnect and remove both sway bar endlinks.



Remove outer tie rod nut

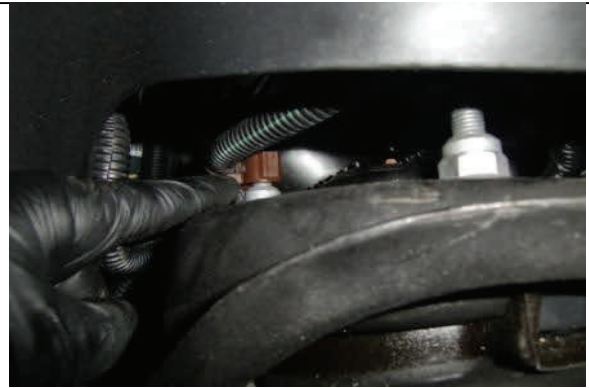


Strike spindle with hammer to break loose tie rod

Installation Instructions (69-3285, 69-3295, 69-3485, 69-3495)



Remove lower strut mounting hardware, remove nut clips



Remove clips from top of upper strut mounting nuts



Remove upper mounting nuts



Remove strut assembly from vehicle.



Loosen but do not remove upper ball joint nut



Strike spindle as shown to break loose ball joint, disconnect



Use pry bar to push down upper control arm, remove nut



Carefully separate ball joint from spindle

Installation Instructions (69-3285, 69-3295, 69-3485, 69-3495)



Unbolt upper control arms hardware, note cam location



Remove upper control arms



Unplug differential solenoid



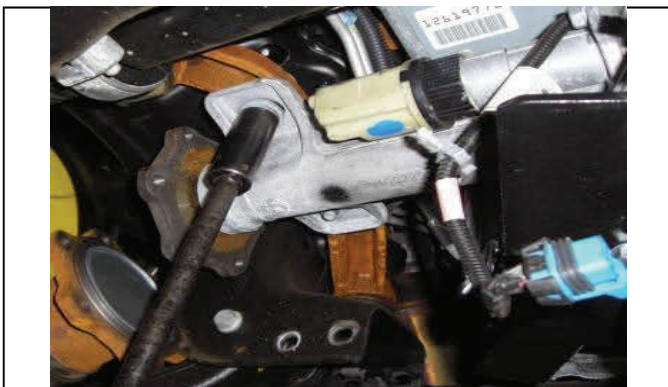
Disconnect U-joint straps at differential yoke, slide back



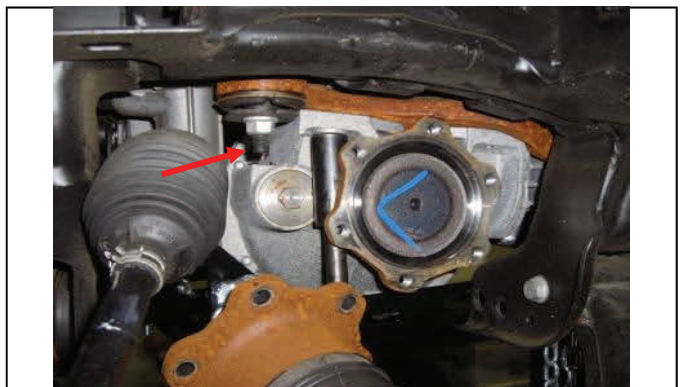
Unbolt CV axles (6) bolts at the differential



Unbolt rear cross member (4) bolts and remove



Support differential with jack and un-bolt passenger side



Remove driver side mounting bolts and unplug vent line

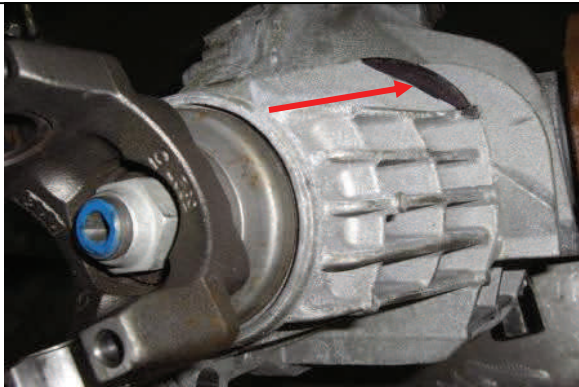
Installation Instructions (69-3285, 69-3295, 69-3485, 69-3495)



Carefully lower differential from vehicle



Secure differential to perform modification



Mark differential as shown indicating material to be removed

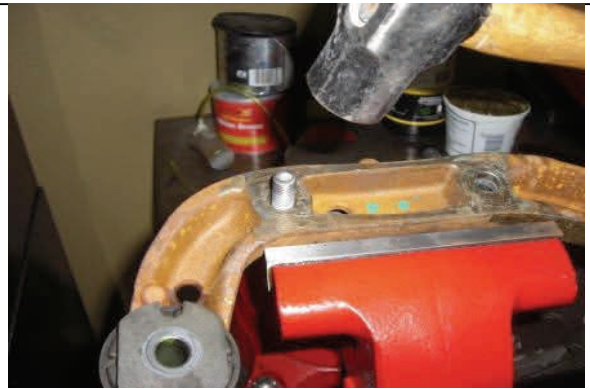


Use a grinder to remove material marked previously

Use an air hammer to remove differential mounting studs or



Remove passenger side differential mounting bracket



Secure in vise and remove mounting studs with hammer



Reinstall bracket and attach billet spacer as shown

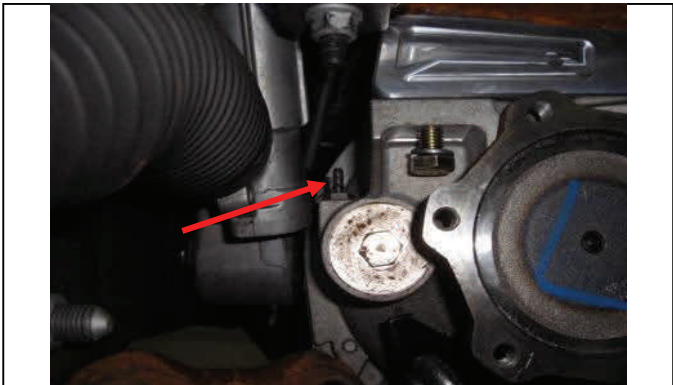


Attach passenger/driver side with socket head hardware

Installation Instructions (69-3285, 69-3295, 69-3485, 69-3495)



Raise and position diff back into vehicle check clearance



Attach with new hardware and reconnect differential vent line



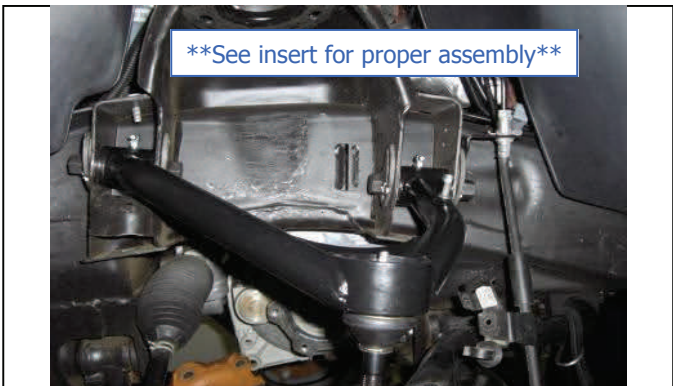
View of passenger side bolted in with new hardware



Reconnect differential solenoid



Reinstall rear cross member as original



Now install new upper control arms to frame with OE hardware



Place new strut extension spacer onto strut

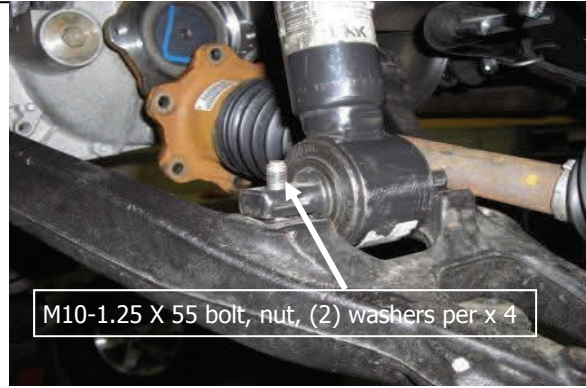


Attach and tighten with OE hardware

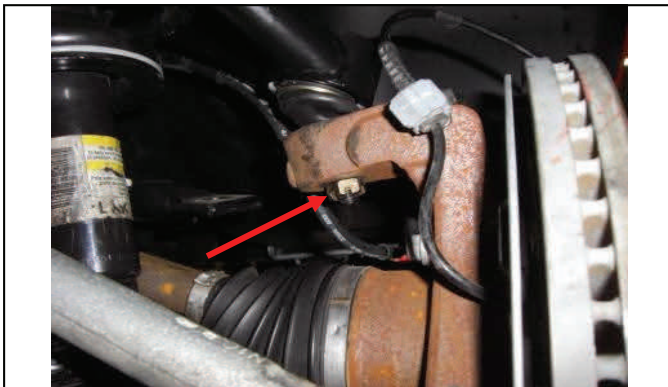
Installation Instructions (69-3285, 69-3295, 69-3485, 69-3495)



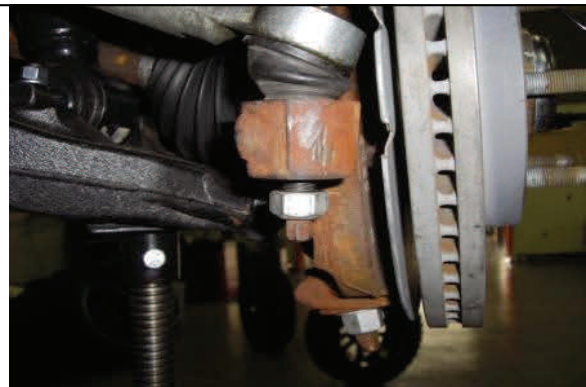
Reinstall strut assembly into vehicle with new hardware



Attach lower strut mount with new shorter hardware, **no clips**



Raise spindle, reattach upper ball joint and tighten, cotter pin



Reconnect outer tie rod end and tighten



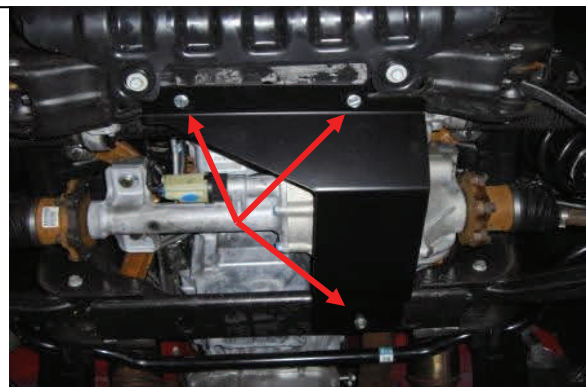
Reattach CV axles to differential (6) bolts and tighten



Reconnect ABS plug near frame



Attach ABS/brake line bracket to upper control arm



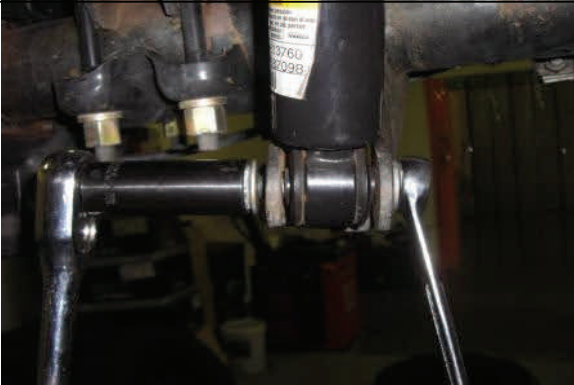
Install new differential skid plate w/ 3 self tapping bolts

Installation Instructions (69-3285, 69-3295, 69-3485, 69-3495)

Note: The following installation instructions cover both the 2/4WD 1500 pick-ups and the 2/4WD Avalanche, Tahoe, Suburban, Yukon, Yukon XL, and Escalade/EXT. This kit will work on vehicles with **AutoRide**, not **AutoLeveling**, unless the end user is willing to make modifications. ReadyLIFT does not supply parts and or methods to accommodate vehicles with this option.



Unclips ABS/traction control lines at the frame



Disconnect and remove rear shocks from vehicle



Install shock extensions to upper shock mount as shown



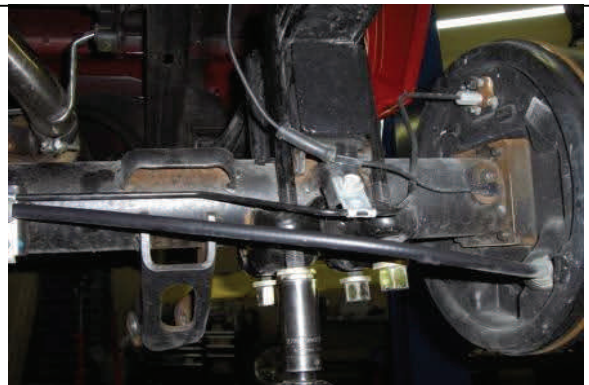
With axle supported remove u-bolts from axle



Carefully lower axle and remove factory block, **do not reuse**



Lower axle more in order to install new lift block



Raise axle align and attach new u-bolts and hardware

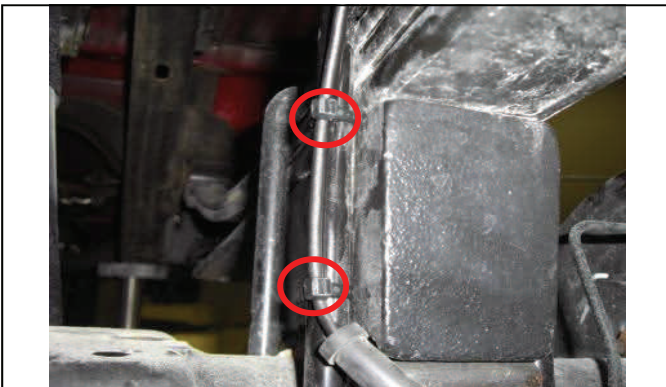
Installation Instructions (69-3285, 69-3295, 69-3485, 69-3495)



Reinstall shock with extension attached and tighten



Lube ABS wire and slide rubber mount up to gain more slack



Attach ABS wire to u-bolts with provided zip ties



Differential brake line bracket made require bending up



Disconnect ABS/TC line at the axle to avoid damage.



Disconnect and remove sway bar end links and shocks



At the differential, install spacer and hardware as shown



Lower axle and remove coil springs and isolators

Installation Instructions (69-3285, 69-3295, 69-3485, 69-3495)



Mark center of bump stop pad and drill 11/32 hole



Use self-tapping bolt and attach bump stop extension



Place Upper coil spacer nut plate above coil housing



Attach coil spring spacer to nut plate and tighten



Reinstall isolators and coil springs and raise axle



Reinstall shocks with extensions as shown and tighten



Install new longer sway bar end links and tighten

Reinstall wheels/tires and lower to the ground. Recheck all work performed, check for proper clearance at full turn and while in reverse. Torque all hardware to spec. Test drive and re-torque u-bolts and wheels. Have vehicle aligned.

Final Checks & Adjustments

Post Installation Warnings: Once the vehicle is lowered to the ground, check all parts which have rubber or urethane components to insure proper torque. Torque wheels to factory specs. Move vehicle backwards and forwards a short distance to allow suspension components to adjust. Turn the front wheels completely left then right and verify adequate tire, wheel, brake line, and ABS wire clearance. Test and inspect steering, brake and suspension components for tightness and proper operation. Inspect brakes hoses and ABS lines for adequate slack at full extension. Failure to perform the post inspection checks may result in vehicle component damage and/or personal injury or death to driver and/or passengers. Test drive vehicle and re-check the torque of all fasteners and re-torque wheels on vehicle. Re-adjust headlamps.

Vehicle Handling Warning: Vehicles with larger tires and wheels will handle differently than stock vehicles. Take time to familiarize yourself with the handling of your vehicle.

Wheel Alignment/Headlamp Adjustment:

It is necessary to have a proper and professional wheel alignment performed by a certified alignment technician. Align the vehicle to factory specifications. It is recommended that your vehicle alignment be checked after any off-road driving. In addition to your vehicle alignment, for your safety and others, it is necessary to check and adjust your vehicle headlamps for proper aim and alignment

Vehicle Re-Torque and Safety Inspection:

Upon completion of all services and adjustments performed on your vehicle, and within 50 miles of driving, check to ensure all fasteners and hardware are properly torqued to specification as noted in the vehicles factory service manual or the torque chart included.

WWW.ReadyLIFT.com

**ReadyLIFT Suspension Inc.
7490 Commercial Way
Henderson, NV 89011
Phone: (702)410-2300
Fax: (702)410-2794
Toll Free: (800)549-4620
Email: Info@ReadyLIFT.com**