



## Installation Instructions 49-1000

**IF YOUR ReadyLIFT® SUSPENSION PRODUCT IS MISSING A PART OR HAS A DAMAGED PART, PLEASE CONTACT CUSTOMER SERVICE DIRECTLY.**

**A NEW REPLACEMENT PART WILL BE SENT TO YOU IMMEDIATELY**

**(877)759-9991**

**MON-FRI 7AM-5PM PST**

**OR**

**EMAIL: [INFO@ReadyLIFT.COM](mailto:INFO@ReadyLIFT.COM)**

**WEBSITE: [www.ReadyLIFT.COM](http://www.ReadyLIFT.COM)**

**\*\*Please retain this document in your vehicle at all times\*\***

### **ReadyLIFT® Suspension Limited Warranty**

#### **Limited Warranty details for ReadyLIFT® Suspension control arms and steering kits**

The ReadyLIFT® Suspension Limited Lifetime Warranty covers defective materials or defective workmanship for the life of the product to the original purchaser and only on the original vehicle which the product was installed. The ReadyLIFT® Suspension Limited Lifetime Warranty excludes the following wearable items: bushings, bushing sleeves, bump stops, top-out stops, spherical bearings (uniballs), heim joints (rod ends), and misalignment spacers (upper control arm and steering). These items are considered wear items and are covered for 90 days from the original purchase date, therefore these items will not be considered defective because of wear. Wear is subject to use of product, use of vehicle, driving conditions, weather conditions, cleanliness of product/components, and maintenance/up-keep. The degree of wear and overall lifetime of each wear item is subject to afore mentioned conditions and circumstances. ReadyLIFT® Suspension will only warranty wear items in the case of workmanship and defects for the period of 90 days following the date of purchase. Please note that all products should be inspected by a professional technician before installing any part/kit onto the vehicle. In addition, all products should be installed by a qualified technician. Please contact ReadyLIFT® Suspension if there is any question as to the quality of workmanship of each component or its installation procedure. Contact ReadyLIFT® Suspension directly about any potentially defective parts prior to removing any parts from the vehicle. If it appears that the part is warrantable, you will be given an RGA number and asked to return the part freight prepaid. If the part is found to be warrantable, at the sole discretion of ReadyLIFT® Suspension, it will be repaired or replaced and returned to you. **The limited warranty expressed by ReadyLIFT® Suspension supersedes that of any claims made by authorized and unauthorized dealers of ReadyLIFT® Suspension products.**

[www.ReadyLIFT.com](http://www.ReadyLIFT.com)

***[www.ReadyLIFT.com](http://www.ReadyLIFT.com) - Phone: (877) 759-9991***



## Installation Instructions 49-1000

Please read Instructions thoroughly and completely before beginning installation.

Installation by a certified mechanic is recommended.

ReadyLIFT® Suspension is **NOT** responsible for any damage or failure resulting from improper installation.

**Safety Warning:** Suspension systems or components that enhance the on and off-road performance of your vehicle may cause it to handle differently than it did from the factory. Extreme care must be used to prevent loss of control or vehicle roll-over during abrupt maneuvers. Always operate your vehicle at reduced speeds to ensure your ability to control your vehicle under all driving conditions. Failure to drive safely may result in serious injury or death to driver and passengers. Driver and passengers must ALWAYS wear your seat belts, avoid quick sharp turns and other sudden maneuvers. ReadyLIFT® Off Road Suspension does not recommend the combined use of suspension lifts, body lifts, or other lifting devices. You should never operate your vehicle under the influence of alcohol or drugs. Constant maintenance is required to keep your vehicle safe. Thoroughly inspect your vehicle before and after every off-road use. It is the responsibility of the retailer and/or the installer to review all state and local laws, with the end user of this product, related to bumper height laws and the lifting of their vehicle before the purchase and installation of any ReadyLIFT® products. It is the responsibility of the driver/s to check their surrounding area for obstructions, people, and animals before moving the vehicle. All raised vehicles have increased blind spots and damage, injury and/or death can occur if these instructions are not followed.

**Installation Warning:** All steps and procedures described in these instructions were performed while the vehicle was properly supported on a two post vehicle lift with safety jacks. Use caution during all disassembly and assembly steps to insure suspension components are not over extended causing damage to any vehicle components and parts included in this kit. Included instructions are guidelines only for recommended procedures and are not meant to be definitive. Installer is responsible to insure a safe and controllable vehicle after performing modifications.

ReadyLIFT® Off Road Suspension recommends the use of an OE Service Manual for model/year of vehicle when disassembly and assembly of factory and related components. Unless otherwise specified, tighten all bolts and fasteners to standard torque specifications listed within the OE Service Manual, or as referenced in the torque specification list provided in these instructions.

Suspension components that use rubber or urethane bushings should be tightened with the vehicle at normal ride height. This will prevent premature wear or failure of the bushing and maintain ride comfort. Larger tire and wheel combinations may increase leverage on suspension, steering, and related components. Due to payload options and initial ride height variances, the amount of lift is a base figure. Final ride height dimensions may vary in accordance to original vehicle ride height. Always measure the vehicle ride height prior to beginning installation.

### Vehicle ride height chart

Driver Front:	Driver Rear:	Pass. Front:	Pass. Rear:
<input type="text"/>	<input type="text"/>	<input type="text"/>	<input type="text"/>

Bolt Size Millimeters	Torque Specs in FT/LB	
	Metric Grade 8.8	Metric Grade 10.9
6mm	6	8
8mm	16	22
10mm	40	45
12mm	54	70
14mm	89	117
16mm	132	175
18mm	182	236

Bolt Size SAE	Torque Specs in FT/LB	
	Grade 5	Grade 8
5/16	15	20
3/8	30	35
7/16	45	60
1/2	65	90
9/16	95	130
5/8	135	175
3/4	185	280



Installation Instructions 49-1000

***Bill of Materials***

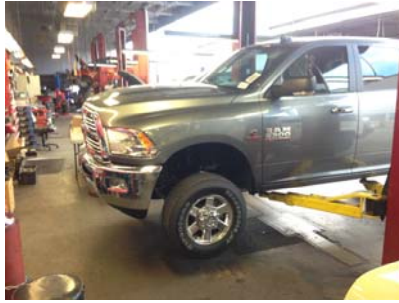
DESCRIPTION	QTY
Sway Bar End Links	2
Endlink Adaptors	2
1/2 - 20 x 2.75 Hex Machine Bolt	2
1/2 - 20 x 1.5" Hex Machine Bolt	2
1/2" SAE Flat Washer	15
1/2 - 20 Top Lock Hex Nut	8
Track Bar Relocation Bracket	1
Spacer 1.365L x .630 id x 1.250od	1
1/2 - 20 x 1.5" Hex Machine Bolt	1
1/2" Flat Fender Washer O.D. 1.250"	1
5/8 - 18 x 3 1/2" Hex Machine Bolt	2

DESCRIPTION	QTY
5/8 - 18 Nylok Nut	4
5/8" SAE Flat Washer	4
Johnny Joint Upper Arms	2
Johnny Joint Lower Arms	2
Brake Line Relocation Bracket	1
Brake Line Relocation Bracket	1
5/16-18 x .75" Hex Machine Bolt	2
Pitman Arm	1
5" Spring-Black Powdercoat	2
Extended Bump Stops	2
Block Kit	1

**IMPORTANT**

ReadyLIFT® Arms/links come preset to length but may need to be adjusted per application for alignment reasons and/or to eliminate possible tire rub. The front shocks maximum extended length is 28 inch's (center mounting point to center mounting point) and the minimum collapsed length is 19 inches or shorter. If shocks are **too long it will cause drive line issues**. It is the installers responsibility to insure the correct length shocks are installed and drive lines are smooth and free of any binding.

1. Measure Vehicle per instructions on previous page



2. Raise the vehicle and support the axles.



3. Remove the wheels from the vehicle.



4. Remove the sway bar end links from the vehicle.

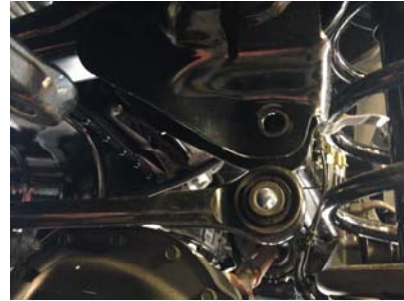
# READYLIFT<sup>®</sup>

## SUSPENSIONS

### Installation Instructions 49-1000



5. Remove the tie-rod from the pitman arm. You may need to brake loose with a hammer.



6. Remove the track bar from the frame side of vehicle.



7. Remove the pitman arm from the vehicle.



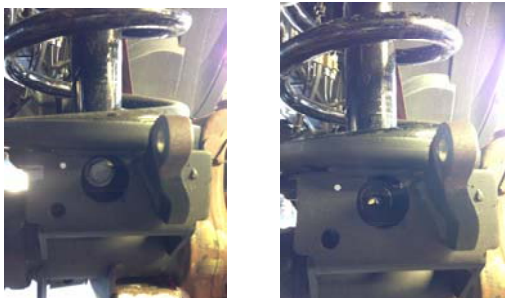
8. Unbolt and remove the f. brake line brackets from the axle.



9. Mark the f. drive shaft for proper alignment during reassembly. Unbolt and slide the drive line back to allow the axle to droop out.



10. Fully support the f. axle and remove the shocks from the top first.



11. Loosen and remove the lower shock bolt.



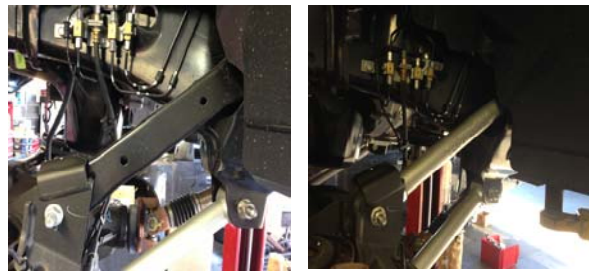
12. Lower the f. axle to remove the springs and the shocks. Remove the shocks and coil springs at the same time.

# READYLIFT® SUSPENSIONS

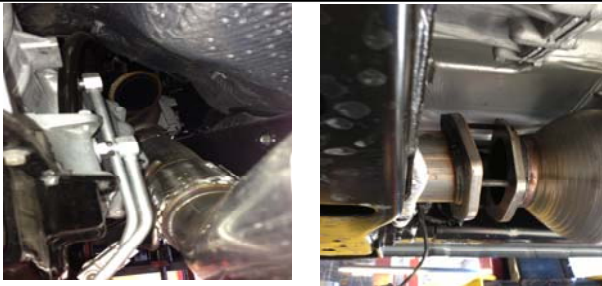
## Installation Instructions 49-1000



13. Remove the factory lower arms and replace with ReadyLIFT® Off Road Arm. The adjustable end is to be mounted at Axle



14. Remove the factory upper arm and replace with the ReadyLIFT® Off Road Arm. **Note: For diesel vehicles you may need to remove the exhaust for clearance to remove passenger upper arm.**



15. **Diesel Models Only:** Unbolt the exhaust at the muffler. Remove the exhaust clamp from header, unbolt the bracket from the transmission. Unhook the exhaust sensor and lower the pipe to make clearance to remove the upper arm and frame side bolt.



16. Once arms are installed, re-install the exhaust and tighten all corresponding mounting points and hardware.



17. Remove the stock bump stops and replace with extended bumps.



18. Install the track bar drop bracket. Mock up the bracket and mark the hole. Remove the bracket. And center punch the mark.



19. Drill the marked hole to a 1/2 inch diameter. Re-install the track bar bracket with provided hardware and spacers, placing the spacer in between the frame and bracket.



20. Install the new pitman arm.

# READYLIFT® SUSPENSIONS

## Installation Instructions 49-1000



21. Install new ReadyLIFT® extended coils and shocks.  
 \*\*\*\* Max Length shock is 28 inch's extended \*\*\*\*  
 Spring Compressor may be needed. If spring compressor is not available you  
 can disconnect upper arms to get a little extra clearance for installation.



22. Install the track bar into the drop bracket.



23. Loosen tie-rod adjuster and swivel the end around 180 degrees. Insert the tie-rod into the pitman arm and tighten. Re-tighten the tie-rod adjuster.



24. Install extended sway bar end links and adapter brackets.



25. Install the f. brake line extension brackets L & R



26. Re-align the drive line to the f. axle and install.



27. Support the rear axle and remove the shocks



28. Unbolt the u-bolts one side at a time, then lower the axle enough to install the block. Install new u-bolts and torque down.



## Installation Instructions 49-1000



29. Install the new extended rear shocks.

Note – Re-tighten all jam nuts and corresponding hardware after installation. Re torque all components after the first 200 miles of driving.

Re-check the installation to ensure that all parts were correctly installed. If you have any question on the installation give us a call and we will be happily assist you.

30.



Install the wheels and tires and torque down to factory specifications.

31. Note: The vehicle must be aligned prior to driving.



## Installation Instructions 49-1000

### Final Checks & Adjustments

**Post Installation Warnings:** Once the vehicle is lowered to the ground, check all parts which have rubber or urethane components to insure proper torque. Torque wheels to factory specs. Move vehicle backwards and forwards a short distance to allow suspension components to adjust. Turn the front wheels completely left then right and verify adequate tire, wheel, brake line, and ABS wire clearance. Test and inspect steering, brake and suspension components for tightness and proper operation. Inspect brakes hoses and ABS lines for adequate slack at full extension. Failure to perform the post inspection checks may result in vehicle component damage and/or personal injury or death to driver and/or passengers and void your warranty. Test drive vehicle and re-check the torque of all fasteners and re-torque wheels on vehicle.

**Vehicle Handling Warning:** Vehicles with larger tires and wheels will handle differently than stock vehicles. Take time to familiarize yourself with the handling of your vehicle.

### Wheel Alignment/Headlamp Adjustment:

It is **mandatory** to have a proper and professional wheel alignment performed by a certified alignment technician. Align the vehicle to factory specifications. It is **mandatory** that your vehicle alignment be checked after any off-road driving. In addition to your vehicle alignment, for your safety and others, it is necessary to check and adjust your vehicle headlamps for proper aim and alignment.

### Vehicle Re-Torque and Safety Inspection:

Upon completion of all services and adjustments performed on your vehicle, and within 50 miles of driving, check to ensure all fasteners and hardware are properly torqued to specification as noted in the vehicles factory service manual or the torque chart included.