

READYLIFT[®]

SUSPENSIONS

PT# 49-1961, 2019-UP RAM 2500 HD 6.0" Lift Kit

IF your ReadyLIFT[®] product has a damaged or missing part, please contact customer service directly and a new replacement part will be sent to you immediately. For warranty issues, please return to the place of installation and contact ReadyLIFT.

(877) 759-9991

MON-FRI 7AM-4PM PST

OR

EMAIL: support@readylift-ami.COM

WEBSITE: ReadyLIFT.COM

****Please retain this document in your vehicle at all times.****

READYLIFT "NO HASSLE" PRODUCT WARRANTY

This unique "no hassle" product warranty proves our commitment to the quality of every product the ReadyLIFT produces. ReadyLIFT product warranty only extends to the Original Purchaser of any ReadyLIFT product. If it breaks, we will give you a new part.

READYLIFT "NO HASSLE" WARRANTY PROCEDURES

Any ReadyLIFT products containing missing or defective components will be covered under warranty by ReadyLIFT. Please call 800-549-4620 to initiate a warranty claim. Rest assured our customer service team will urgently address the matter and expedite the replacement parts. In the event of a defective product, ReadyLIFT may request a return of the defective product (at ReadyLIFT's expense) so the quality team can analyze the nature of the defect. Returning defective product will not delay the replacement part delivery.

ReadyLIFT leveling kit, block kits, and lift kit products are NOT intended for off-road abuse. Any abuse or damage as a result of off-road use voids the warranty of the ReadyLIFT product. Exception: ReadyLIFT Jeep SST and Terrain Flex Lift Kits are designed for normal off-road use to compliment the Jeep vehicle's off-road capability. All Jeep Lift Kit products are covered under warranty when used in recreational off-road environments.

Warranty does not apply to discontinued, clearance or outlet products. Wearable components including but not limited to, shocks, ball joints, heim joints, bushings, and steering extensions, are covered for up to 1-year. Labor, installation, surcharges or any other applicable fees from the original purchase are non-refundable. ReadyLIFT is not responsible for any consequential damage to the vehicles.

ReadyLIFT reserves the right to change, modify, or cancel this warranty without prior notice.



READ INSTRUCTIONS THOROUGHLY AND COMPLETELY BEFORE BEGINNING INSTALLATION.

INSTALLATION BY A CERTIFIED PROFESSIONAL MECHANIC IS HIGHLY RECOMMENDED.

READYLIFT® IS NOT RESPONSIBLE FOR ANY DAMAGE OR FAILURE RESULTING FROM IMPROPER INSTALLATION.

Safety Warning

MISUSE OF THIS PRODUCT COULD LEAD TO INJURY OR DEATH.

Suspension systems or components that enhance the on and off-road performance of your vehicle may cause it to handle differently than it did from the factory. Extreme care must be used to prevent loss of control or vehicle rollover during abrupt maneuvers.

Always operate your vehicle at reduced speeds to ensure your ability to control your vehicle under all driving conditions. Failure to drive safely may result in serious injury or death to driver and passengers.

Driver and passengers must ALWAYS wear your seat belts, avoid quick sharp turns and other sudden maneuvers. ReadyLIFT Suspension does not recommend the combined use of suspension lifts, body lifts, or other lifting devices.

You should never operate your vehicle under the influence of alcohol or drugs.

Constant maintenance is required to keep your vehicle safe. Thoroughly inspect your vehicle before and after every off-road use.

It is the responsibility of the retailer and/or the installer to review all state and local laws, with the end user of this product, related to bumper height laws and the lifting of their vehicle before the purchase and installation of any ReadyLIFT products.

It is the responsibility of the driver/s to check their surrounding area for obstructions, people, and animals before moving the vehicle.

All raised vehicles have increased blind spots; damage, injury and/or death can occur if these instructions are not followed.

Installation Warning

All steps and procedures described in these instructions were performed while the vehicle was properly supported on a two post vehicle lift with safety jacks.

Use caution during all disassembly and assembly steps to insure suspension components are not over extended causing damage to any vehicle components and parts included in this kit.

Included instructions are guidelines only for recommended procedures and are not meant to be definitive. Installer is responsible to insure a safe and controllable vehicle after performing modifications.

ReadyLIFT Suspension recommends the use of an OE Service Manual for model/year of vehicle when disassembly and assembly of factory and related components.

Unless otherwise specified, tighten all bolts and fasteners to standard torque specifications listed within the OE Service Manual.

Suspension components that use rubber or urethane bushings should be tightened with the vehicle at normal ride height. This will prevent premature wear or failure of the bushing and maintain ride comfort.

Larger tire and wheel combinations may increase leverage on suspension, steering, and related components.

Due to payload options and initial ride height variances, the amount of lift is a base figure. Final ride height dimensions may vary in accordance to original vehicle ride height. Always measure the vehicle ride height prior to beginning installation.

SAEJ2492 Warning

By installing this product, you acknowledge that the suspension of this vehicle has been modified. As a result, this vehicle may handle differently than that of factory equipped vehicles. As with any vehicle, extreme care must be used to prevent loss of control or roll-over during sharp turns or abrupt maneuvers. Always wear seat belts, and drive safely, recognizing that reduced speeds and specialized driving techniques may be required. Failure to drive this vehicle safely may result in serious injury or death. Do not drive this vehicle unless you are familiar with its unique handling characteristics and are confident of your ability to maintain control under all driving conditions. Some modifications (and combinations of modifications) are not recommended and may not be permitted in your state. Consult your owner's manual, the instructions accompanying this product, and state laws before undertaking these modifications. You are responsible for the legality and safety of the vehicle you modify using these components.

Due to payload options and initial ride height variances, the amount of lift is a base figure. Final ride height dimensions may vary in accordance to original vehicle ride height. Always measure the vehicle ride height prior to beginning installation.

A lifted vehicle may have different headlight aim performance. ReadyLIFT recommends marking and recording the headlight beam position before kit installation and then adjusting, if necessary, the headlamps to the same height settings after kit installation. Set the vehicle on a level surface 10' to 15' from a solid wall or garage door. (This is a general distance with some manufacturers requiring different distances.) Note the top height of the low beam's bright spot, the top of the most intense part of the beam, for driver and passenger side. Height may vary from side to side. Repeat this procedure and adjust after lift kit is installed. Adjust if the aim is off by turning the adjusters gradually (a quarter of a turn) and looking to see where the new alignment falls. It may be easier to block one headlamp while adjusting the other. Consult the owner operation manual for procedures to adjust headlights - many automakers offer headlight aiming specs. Some states have their own specifications when it comes to headlight aim, so it's best to follow those rules when aligning headlights.

This suspension system was developed using a 37" x 13.5" tire with 20" x 9" wheel and a offset of 0. If wider tires are used, offset wheels may be necessary and trimming may be required. Factory wheels can be used but are not recommended with tires over 11" wide.

The stock spare rim can be run in an emergency - exercise extreme caution under stock spare tire operating conditions. Please note that, if running the spare factory tire, it is done for short distances and a speed not to exceed 45mph or damage to differentials may occur.

IMPORTANT NOTE:

Kit not compatible with other aftermarket lift springs or other lift systems. Use of additional lift components may damage vehicle and could result in injury or death.

PRE-INSTALLATION MEASUREMENTS:

It is imperative that you record the following measurements and factory components in the tables below. ReadyLIFT tests and records as much data from each application as available at the time of product development. Vehicle manufacturers may change components or add models with different options. Recording and not exceeding the fender-to-hub-center ReadyLIFT calls out will ensure the lift on the vehicle is correct.

These measurements will affect the performance of this lift kit. Failure to ensure proper stock conditions may result in over lifting, causing premature failure of axles, CV boots and drivetrain. Over lifting a vehicle will also result in an incorrect wheel alignment. This will wear tires incorrectly. Incorrect alignment will cause poor vehicle handling issues including but not limited to under steer. Over lifting will also cause a shock top off condition resulting in poor ride quality accompanied by pops and clunks which are symptoms of prematurely wearing components.

Failure to adjust head lamps may cause dangerous driving conditions for you and other drivers on the road. Record the head lamp position before the installation of this lift or leveling kit and adjust to original factory position after the completion to ensure a safe and enjoyable experience.

VEHICLE HEIGHT MEASUREMENTS

	Driver Before	Driver After	Passenger Before	Passenger After
Front				
Rear				

****MEASUREMENT IS TO BE PERFORMED FROM CENTER OF HUB TO FENDER EDGE STRAIGHT UP FROM HUB.****

RECORD HEAD LAMP MEASUREMENTS

Driver Before	Driver After	Passenger Before	Passenger After

BILL OF MATERIALS

Components			
Coil Spring, Front	2	M14 Flat Washer	4
Coil Spring Spacer, Rear	2	M18-2.5 x 130MM HHB YZ Grade 10.9	2
Falcon Shock, Front	2	M18-2.5 C-Lock Nut Grade 10.9	2
Falcon Shock, Rear	2	M18 Flat Washer	4
Radius Arm Drop Bracket	2	M12-1.75 x 70MM HHB YZ Grade 10.9	4
Radius Drop Bracket Nut Plate	4	M12-1.75 C-Lock Nut Grade 10.9	4
Front Track Bar Bracket	1	M12 Flat Washer	4
Rear Track Bar Bracket	1	M12 Fender Washer	4
Rear Track Bar Bracket Crush Sleeve	1	3/8"-16 x 1" HHB YZ Grade 8	4
Driver Sway Bar Drop Bracket	1	3/8"-16 C-lock Nut Grade 8	4
Passenger Sway Bar Drop Bracket	1	3/8" Flat Washer	8
14.25" Sway Bar Endlink	2	3/8"-16 x 1" HHB YZ Grade 8	4
5" Front Bump Stop	2	3/8"-16 C-lock Nut Grade 8	4
Rear Bump Stop Extension	2	3/8" Flat Washer	8
Pitman Arm Drop	1	3/8"-16 x 1" HHB YZ Grade 8	2
Transmission Crossmember	1	3/8"-16 C-lock Nut Grade 8	1
Transmission Mounting Plate	1	3/8" Flat Washer	3
Transmission Mount Spacer	2	M14-2.0 x 110MM HHB YZ Grade 10.9	1
Transmission Connector Bracket	1	M14-2.0 C-Lock Nut Grade 10.9	1
Transmission Harness Bracket	1	M14 Flat Washer	2
6-Bolt Clocking Ring	1	5/16"-18 x 1" HHB YZ Grade 8	2
Front Brake Line Bracket	2	5/16"-18 C-Lock Nut Grade 8	2
Rear Brake Line Bracket	1	5/16" Flat Washer	4
Pinch Clamp	1	M14-2.0 C-Lock Nut Grade 10.9	2
Spring Isolator Retainer	2	M14 Flat Washer	2
Isolator Drill Template	1	3/8"-16 Locking Nut	6
Hardware		3/8" SAE Flat Washer	6
7/16"-14 x 1.25" HHB Gr. 8 YZ	4	M12-1.75 x 45mm Grade 10.9 HHB	6
7/16"-14 C-Lock Nut CZ	4	M12-1.75 Grade 10.9 C-Lock Nut	6
7/16" Flat Washer	8	M12 Flat Washer	6
M14-2.0 x 75MM HHB YZ Grade 10.9	2	M6-1.0 x 25mm HHB Gr10.9	2
M14-2.0 x 75MM HHB YZ Grade 10.9	2	M6-1.0 x 20mm HHB Gr10.9	2
M14-2.0 C-Lock Nut Grade 10.9	2	M6-1.0 C-Lock Nut	2
5/16"-18 x 1/2" HHB YZ Grade 8	6	M6 Flat Washer	4



Before starting installation: ReadyLIFT Suspension highly recommends that the installation of this product be performed by a professional mechanic with experience working on and installing suspension products. Professional knowledge and skill will typically yield the best installation results. If you need an installer in your area, please contact ReadyLIFT Suspension Customer Service to find one of our "Pro-Grade" Dealers.

INSTALLATION BY A PROFESSIONAL IS HIGHLY RECOMMENDED.

- A Factory Service Manual for your specific Year / Make / Model is highly recommended for reference during installation.
- All lifted vehicles may require additional driveline modifications and / or balancing.
- A vehicle alignment is REQUIRED after installation of this product.
- Speedometer / Computer recalibration is required if changing +/- 10% from factory tire diameter.
- A vehicle lift or hoist greatly reduces installation time. Installation time estimates are based on an available vehicle hoist.
- Vehicle must be in excellent operating condition. Repair or replace any and all worn or damaged components prior to installation.

Parts shown in red for picture clarification only

ReadyLIFT recommends all steps and procedures described in these instructions be performed while the vehicle is properly supported on a two post vehicle lift with safety jacks. Otherwise, park vehicle on a clean flat surface and block the rear wheels for safety. Engage the parking brake.

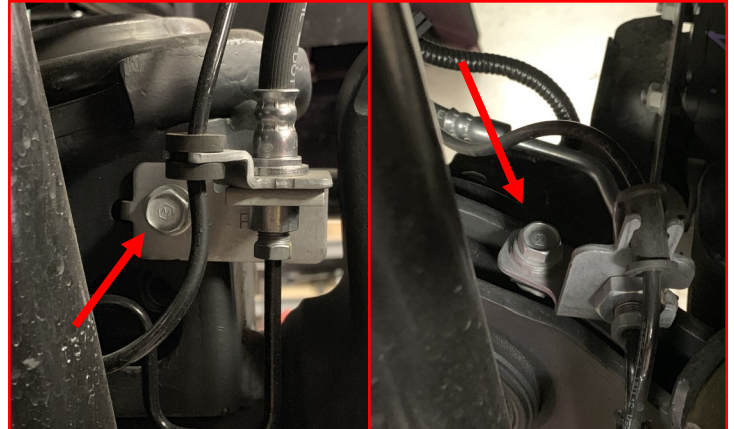
Disconnect the vehicle power source at the ground terminal on the battery.

Lock the steering wheel in the straight forward position with the column lock or steering wheel locking device.

Raise the front of the vehicle and support with safety jack stands. Remove the front wheels. Starting with the front of the vehicle, all steps are to be completed on both sides of the vehicle unless instructed.

Front Suspension Installation

Remove the (2) brake line/ABS brackets attached to the axle and radius arm.



Locate the brake line/ABS bracket on the inside of the frame rails and remove.



Loosen but do not remove the **lower shock mounting bolts**.



Place a jack under the axle for support. Remove the **radius arm bolts**. Retain factory hardware.



Mark the driveshaft to pinion location. Remove the front driveshaft from the axle. Let hang out of the way.



Rotate the axle to release radius arms from the mounting location.



*****Parts shown in red for picture clarification only*****

Locate and install the **radius arm drop brackets** using the **factory hardware** at the main mounting location. Do not tighten at this time.



Locate the (4) wire flag nuts and the (4) holes on the outside of the frame. Bend the wires to align the tab nut with the rear mounting holes in the bracket and frame.



Once lined up with the lower mounting holes, install the **1/2" bolts and washers**. Leave loose at this time.



Bend the wires to align the tab nut with the front mounting holes in the bracket and frame. Install the **1/2" bolts and washers**.



Tighten **1/2" bolts** first, Ensure the **drop bracket** is resting flush against the frame rail and torque to **80 ft-lbs.**

Tighten and torque **factory mounting bolt** to **200 ft-lbs.**

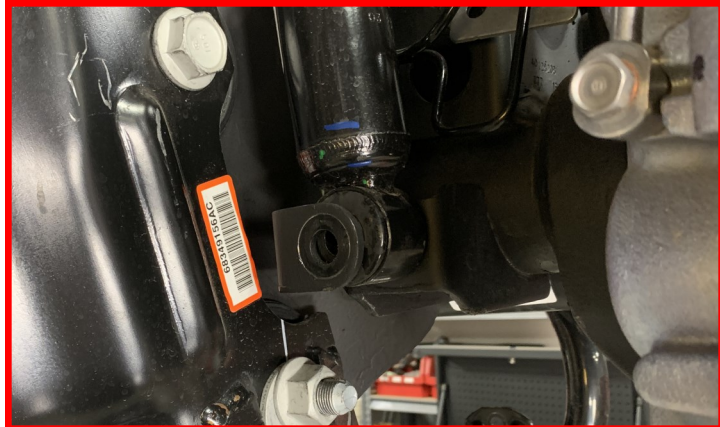


Rotate the axle until the radius arms are lined back up into the **drop brackets.** Install using **M18 bolts, washers and nuts.**

Do not tighten at this time.

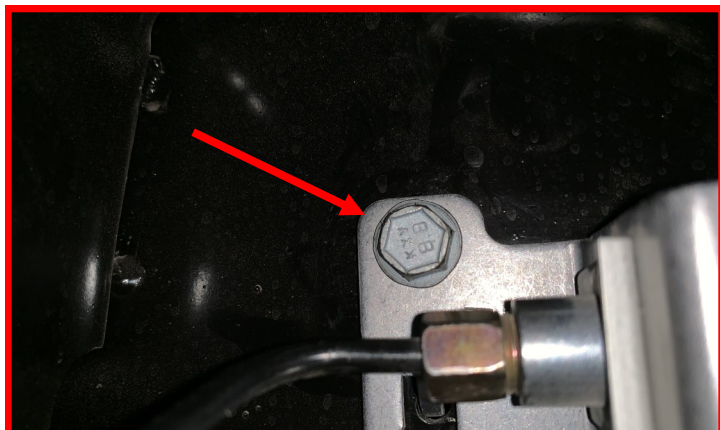


Supporting the axle with a suitable jack, remove the front shocks and discard properly.

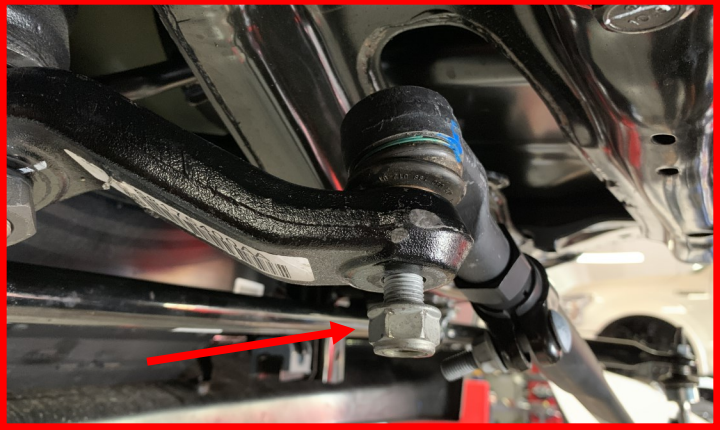


Remove the **(2) brake line bracket bolts** on both sides of the vehicle attached to the inside of the upper frame.

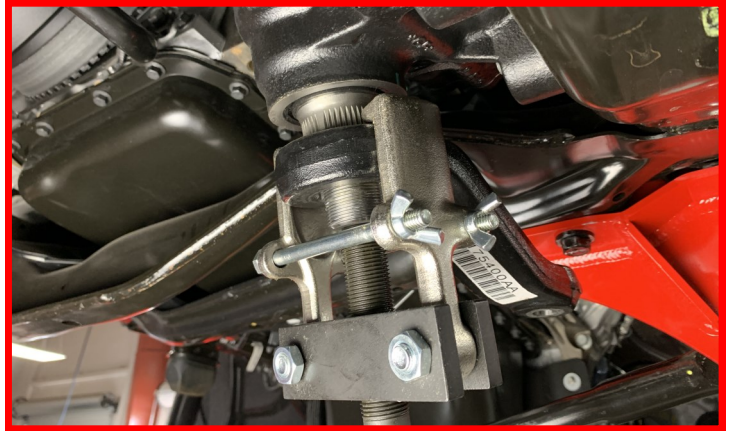
Retain factory hardware.



Remove the **tie rod end nut**. Strike the pitman arm tie rod boss with a dead blow hammer to dislodge the taper. Remove the tie rod end from the pitman arm and let hang out of the way.



Remove the **pitman arm nut**. Using a pitman arm puller, remove the pitman arm from the steering box sector shaft.



Note: Be sure to thoroughly clean splines prior to installing pitman arm replacement.

Locate and install the **provided drop pitman arm** in the factory orientation using **factory hardware** and **thread locker**.



Loosen **tie rod end adjuster** and rotate tie rod end 180 degrees. Attach tie rod end to pitman arm using **factory hardware**.

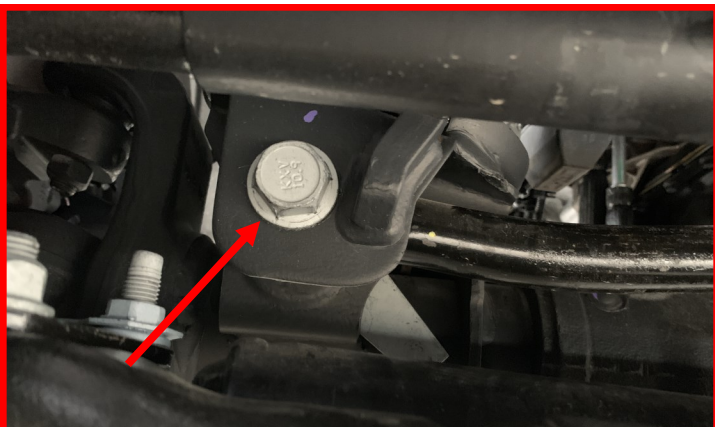
Rotate the steering all the way to the right until hubs are resting on the turn stops.

Torque pitman arm nut to 177 ft-lbs.

Torque the tie rod end to 100 ft-lbs.

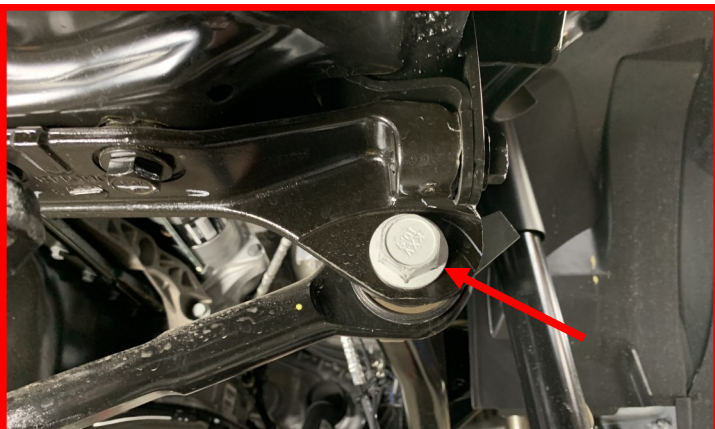


Loosen but do not remove **track bar bolt** at the axle.



Remove **track bar hardware** at the frame and swing track bar out of the way.

Retain factory hardware.



Lower the axle enough to remove the **coil springs** from their mounts and discard.

Be sure to retain the factory spring isolators.

Remove the factory shock and dispose of them in an appropriate way.

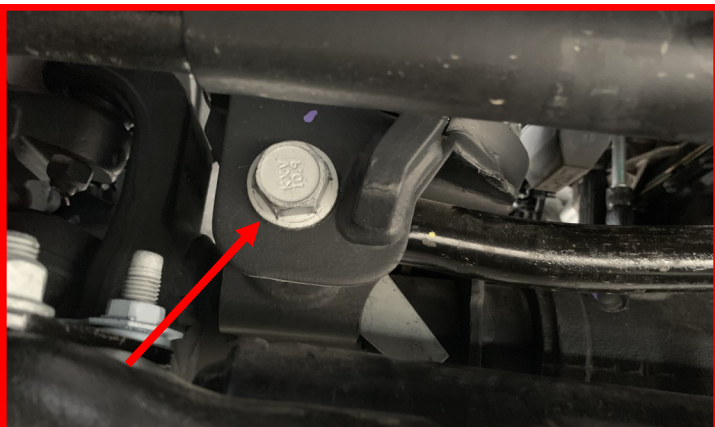


Remove the **(5) factory mounting bolts** from the factory track bar bracket and remove from vehicle.

Retain factory hardware.

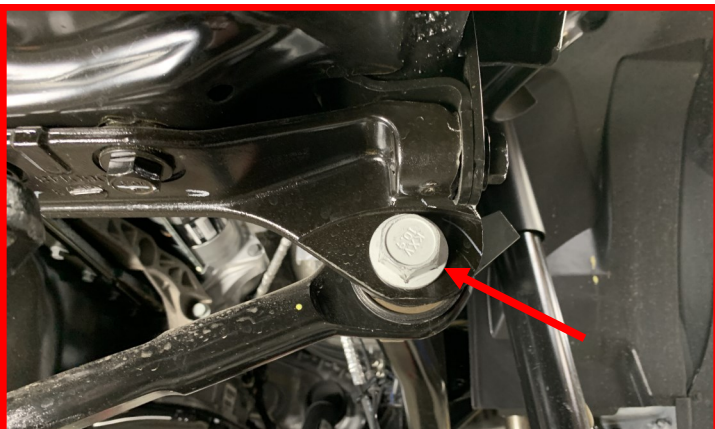


Loosen but do not remove **track bar bolt** at the axle.



Remove **track bar hardware** at the frame and swing track bar out of the way.

Retain factory hardware.



Lower the axle enough to remove the **coil springs** from their mounts and discard.

Be sure to retain the factory spring isolators.

Remove the factory shock and dispose of them in an appropriate way.



Remove the **(5) factory mounting bolts** from the factory track bar bracket and remove from vehicle.

Retain factory hardware.



Using the supplied drill template, align the corresponding hole with the correct side. "D" will line up with the factory driver side hole and the "P" will line up with the passenger side hole.



Using a marker or paint marker, Mark the location of the small hole. This is to be where you will drill the new mounting hole.



Center punch the marks and using an appropriate tool, drill the 1/2" holes through the spring tower.

Paint the cut surface to prevent any corrosion.

NOTE: USE CAUTION WHEN DRILLING THROUGH AS THERE ARE VITAL SAFETY SYSTEMS ON THE OTHER SIDE THAT CAN BE DAMAGED IF CARE ISN'T TAKEN WHILE DRILLING.



Using thread locker install the (3) supplied 5/16" bolt from the inside out on the supplied spring isolator retainer.

Install the supplied spring isolator retainer into the factory isolator boss.



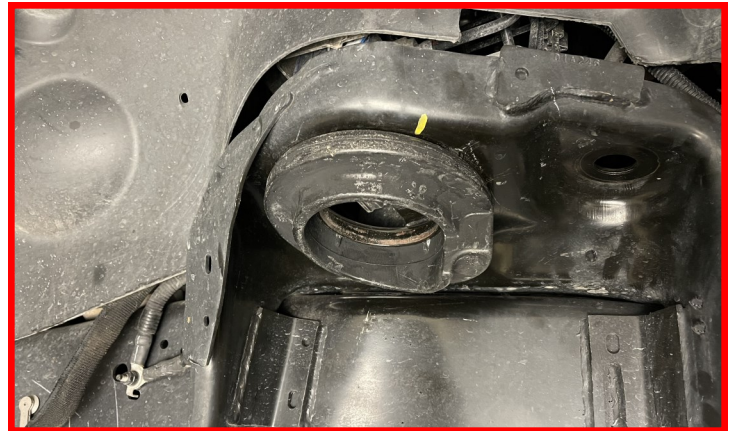
Tighten the (3) 5/16" bolts until tight.

Torque the bolts to **35 ft-lbs.**

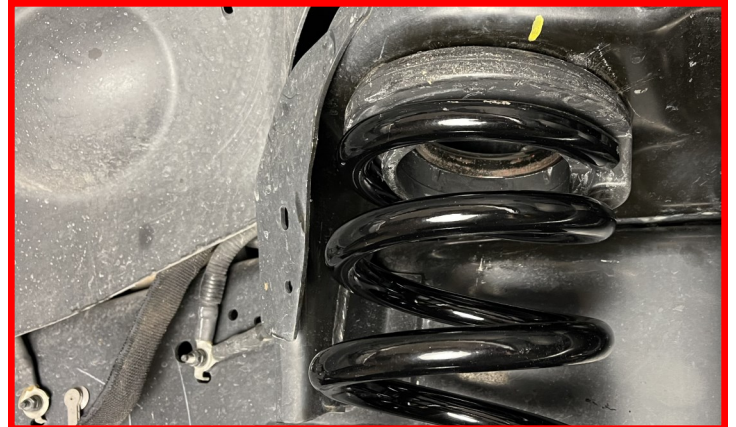


Install spring isolator over the retainer, ensure the alignment tab is installed into new clocking hole.

NOTE: FOR CLARIFICATION PURPOSES THE SPRING ISOLATOR RETAINER IS NOT SHOWN IN PHOTO.



Install the **provided coil springs** with factory isolators on top. Make sure the isolator is positioned on the flat end of the coil spring. Lower the axle low enough to set both springs in place.



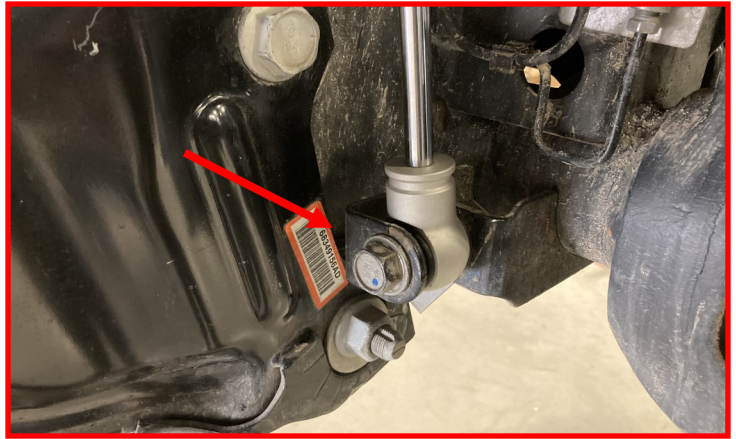
Install the **provided Falcon front shock** into the upper frame mount using the **provided hardware.**

Torque to 45 ft-lbs



Install the **Falcon front shock** lower mount to the axle mount using the **factory hardware**.

Do not tighten at this time.



You will now be able to install the **sway bar end link** while lifting the axle into place.

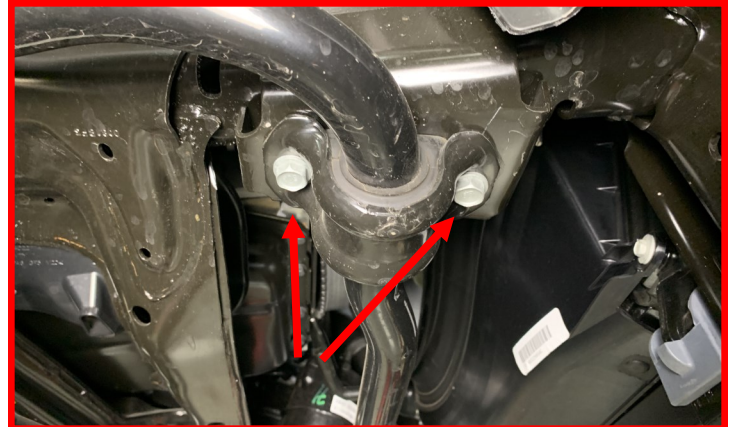
Make sure to align the springs with each spring perch as you go up.

Install the **(2) 18mm sway bar end link nut**.

Torque to 50 ft-lbs.

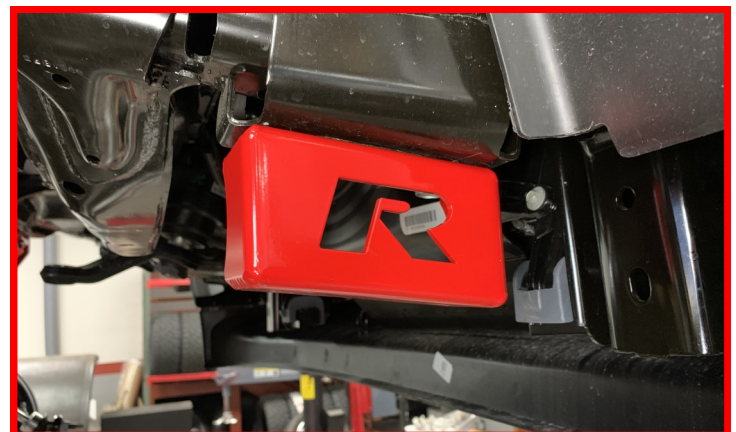


Remove the **(4) sway bar bracket bolts** and let the sway bar hang out of the way.



Install the **sway bar drop brackets** to the frame using the **factory hardware**.

Note: You should be able to read the ReadyLift R from either side of the vehicle normally.



Install the sway bar to the drop brackets using the **provided 7/16" hardware**.

Torque factory hardware to 50 ft-lbs.

Torque the 7/16" hardware to 50 ft-lbs.



Install **provided brake line extensions** to the frame brake line brackets using the **provided 5/16" hardware**.
Do not tighten at this time.

Attach **provided extension bracket** to the inside frame rail using the **factory hardware**. It will be necessary to gently pull down and bend the metal brake line on the driver side to gain the slack needed.



The passenger side bracket will angle around the frame gusset.

Torque to 15 ft-lbs.



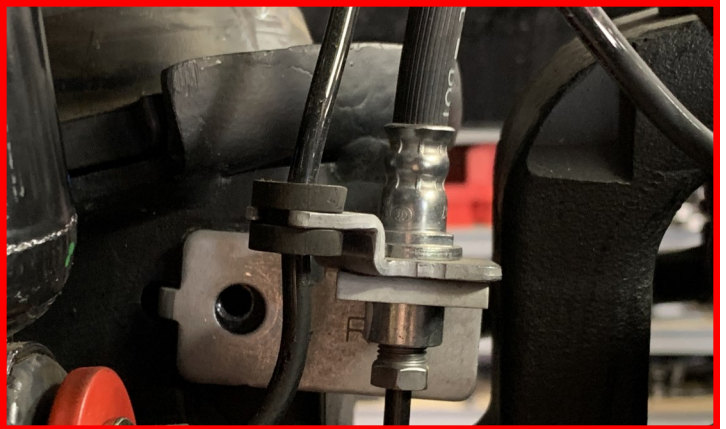
Install the **(2) ABS sensor harness and brake line brackets** to the radius arm using **factory hardware**.

Torque to 10 ft-lbs.



Install the (2) ABS brackets to the axle using factory hardware.

Torque to 10 ft-lbs.



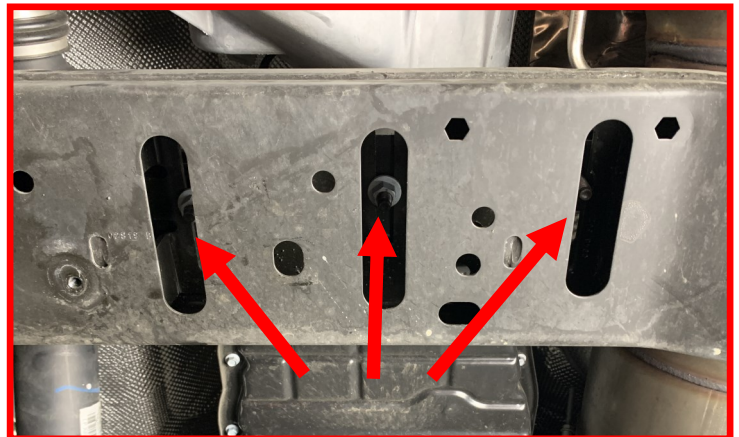
Parts shown in red for picture clarification only

Clocking Ring and Transmission Crossmember Installation

Using a suitable jack, support the transfer case. Allow yourself ample room around the front of the transfer case to ensure you have room to access hardware and harnesses.



With the transfer case supported, locate the (3) transmission mounting nuts.



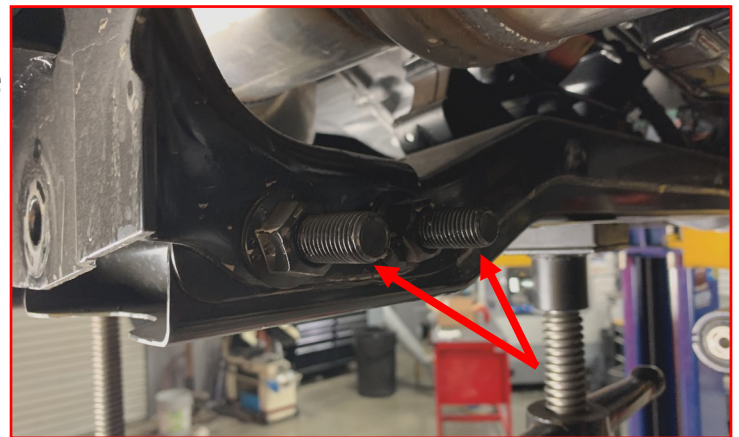
Remove the (3) transmission mounting nuts and retain the factory nuts.



Remove the harness mounting clips attached to the front of the transmission crossmember.

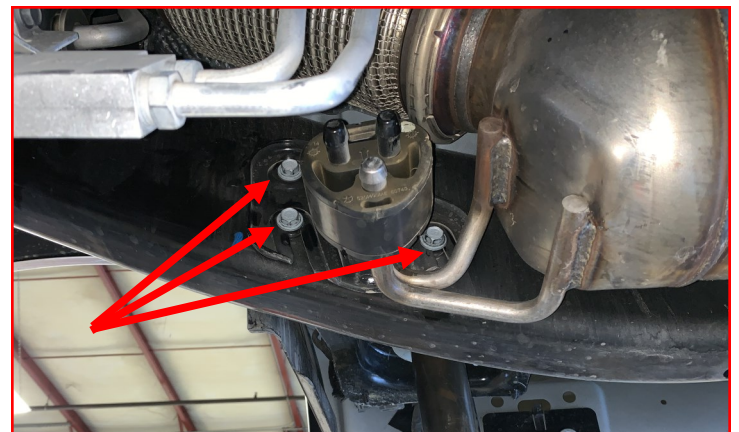


Support the transmission crossmember with a suitable jack stand. Working on one side at a time, Loosen and remove two transmission crossmember bolts.

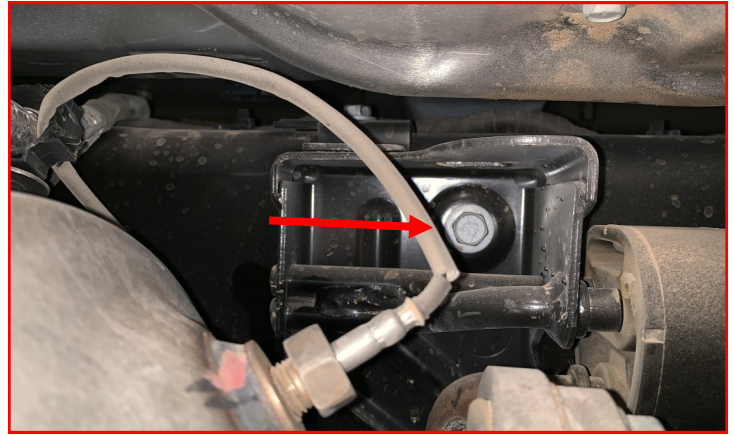


Note: Vehicles that are equipped with optional diesel engines, It will be necessary to raise the DPF (Diesel Particulate Filter) to remove passenger side transmission crossmember bolts. The following steps will instruct you on how to proceed.

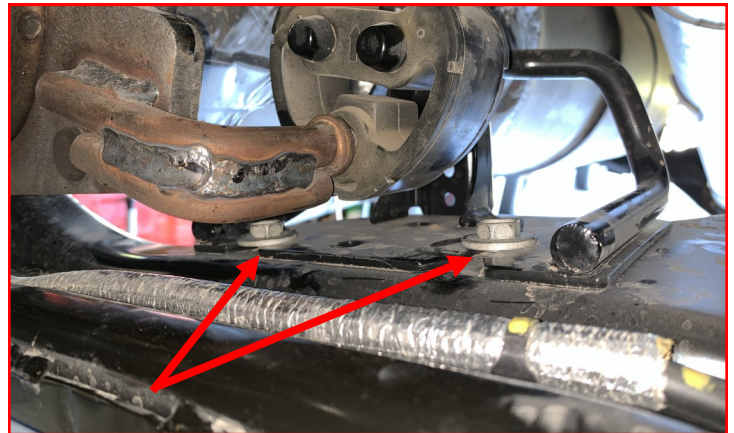
Remove the (3) front exhaust hanger mounting bolts.



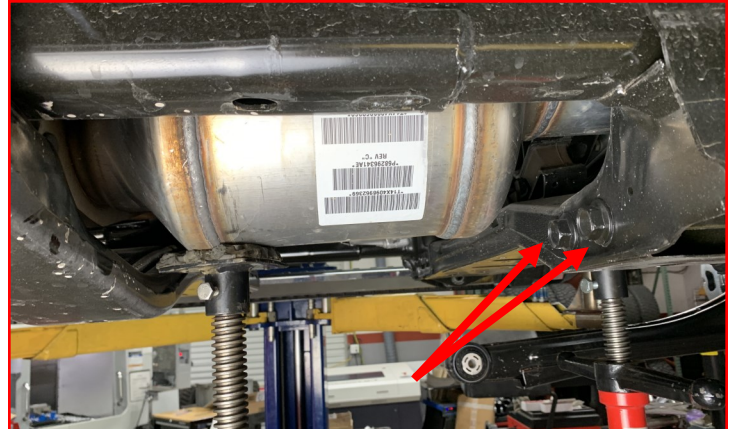
Remove the (2) center exhaust hanger mounting bolts.



Remove the (2) Diesel Exhaust Fluid (DEF) tank crossmember exhaust hanger mounting bolts.

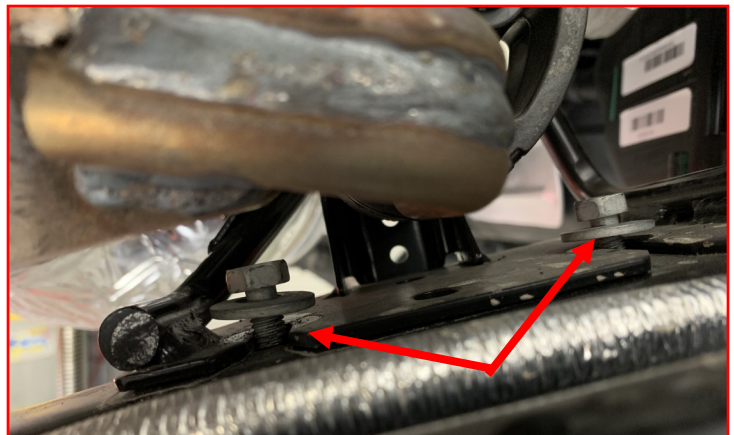


Raise the DPF with a suitable jack and remove the (2) passenger transmission crossmember bolts. Retain factory hardware.



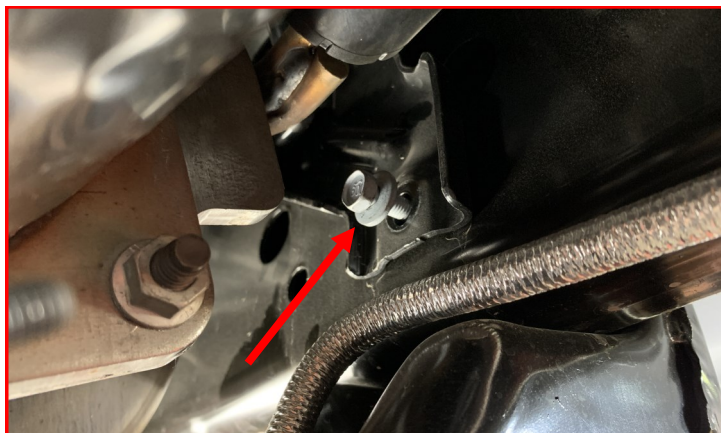
Lower jack and install the (2) Diesel Exhaust Fluid (DEF) tank crossmember exhaust hanger bolts.

Torque the mounting bolts to 15 ft-lbs.



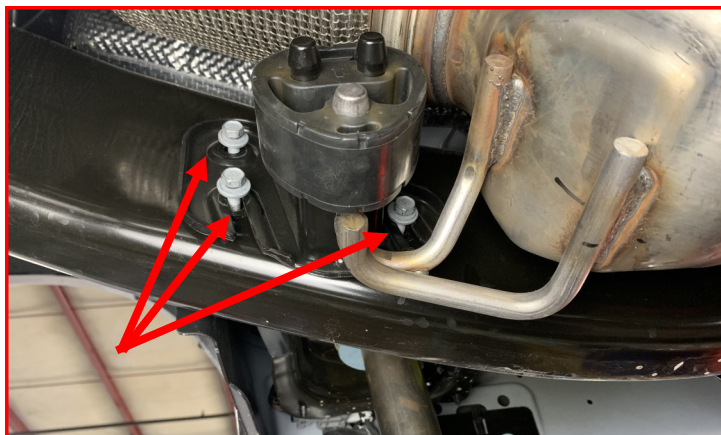
Install the (2) center exhaust hanger mounting bolts.

Torque the mounting bolts to 15 ft-lbs.



Install the (3) front exhaust hanger mounting bolts.

Torque the mounting bolts to 15 ft-lbs.



Loosen but do not remove radius arm frame pivot bolt. This will aid in the removal of the transmission crossmember.

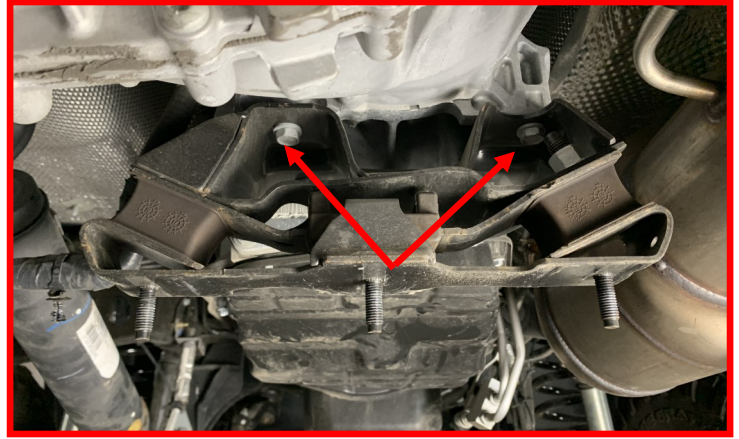


Remove the driver side transmission crossmember bolts and retain factory hardware.

Ensure all transmission crossmember hardware, harnesses or other are clear and remove the transmission crossmember.



The transmission mount is attached with (4) bolts. Remove the (2) bolts located at the rear of the mount and retain the factory hardware.



The remaining (2) bolts are located at the front of the mount. Remove the (2) bolts and remove the mount. Retain the factory hardware.

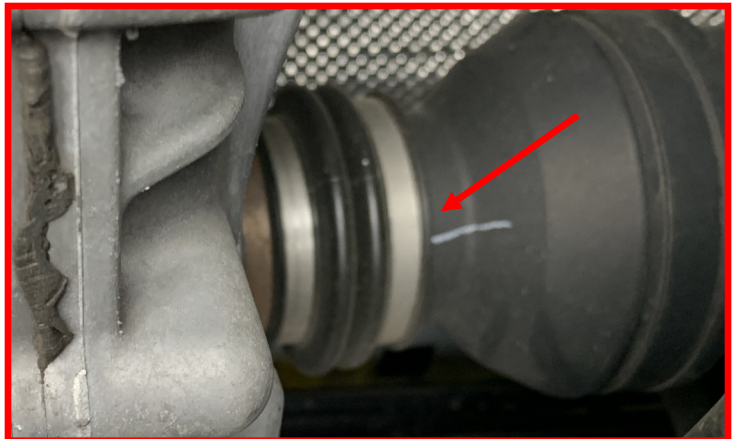


Note: Removing the transmission mount isn't necessary but it will allow additional room to access other components.

Mark the driveshaft to pinion flange location. Remove the front driveshaft hardware from the flange. Let hang out of the way. Retain the factory hardware.



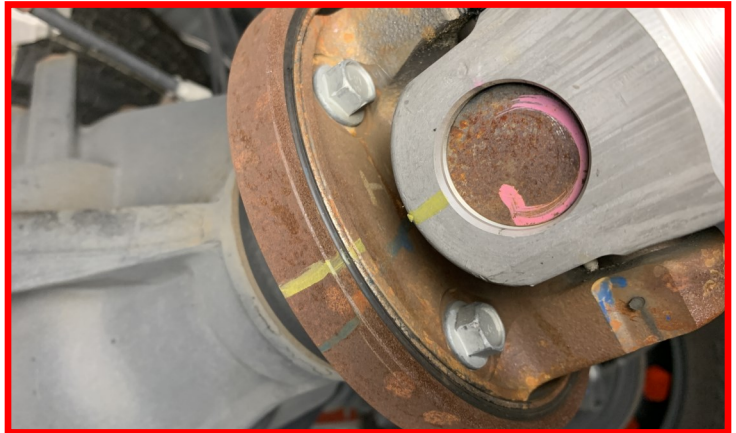
Carefully remove the larger clamp on the front driveline dust boot. Slide the boot back to gain access to the retaining clip.



Using the appropriate pliers, open the retaining clip and slide the front driveline off the splines.



Mark the driveshaft to pinion flange location. Remove the rear driveshaft hardware from the flange. Let hang out of the way. Retain the factory hardware.



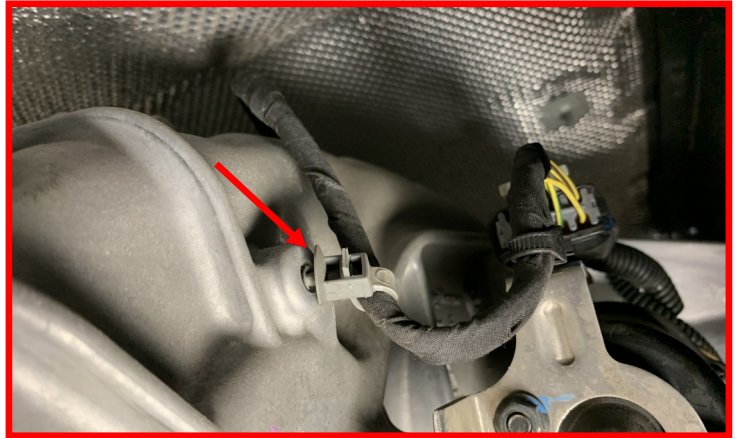
To remove the rear driveshaft, carefully slide the slip yoke out of the tail shaft housing on the transfer case. Take care not to damage the slip yoke or tail shaft boot when handling the driveshaft.



Remove the **connector** on the transfer case shift solenoid.



Remove the **transfer case harness retaining clip** on the rear of the transfer case.



Remove the **transfer case harness retaining clip** located on the top of the transfer case.



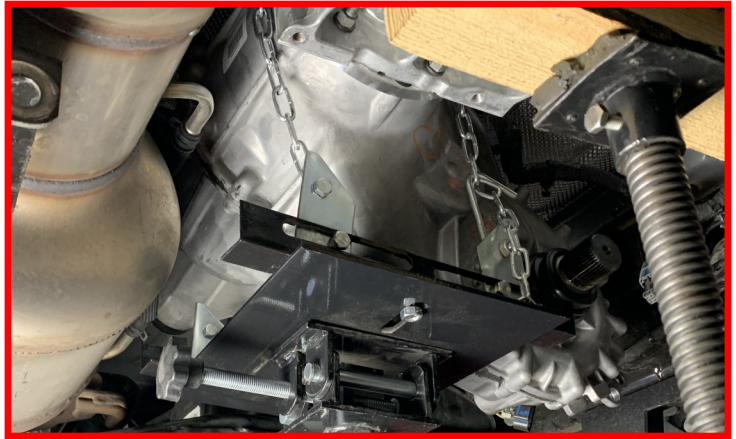
Using a suitable jack, support the transmission.



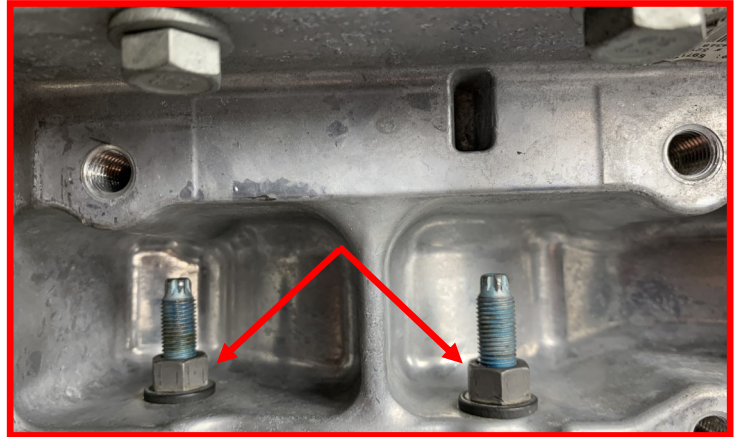
Ensure the transfer case is free of any other harness clips and the harnesses are not wrapped, hung on or caught on any part of the transfer case.



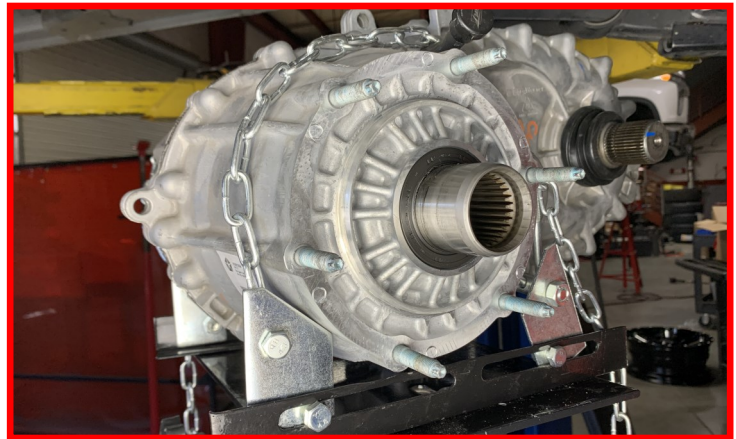
Using a suitable jack, support the transfer case.



Remove the (6) transfer case mounting nuts. (2) are located on the bottom, (1) on either side on the transfer case and (2) located on the top.

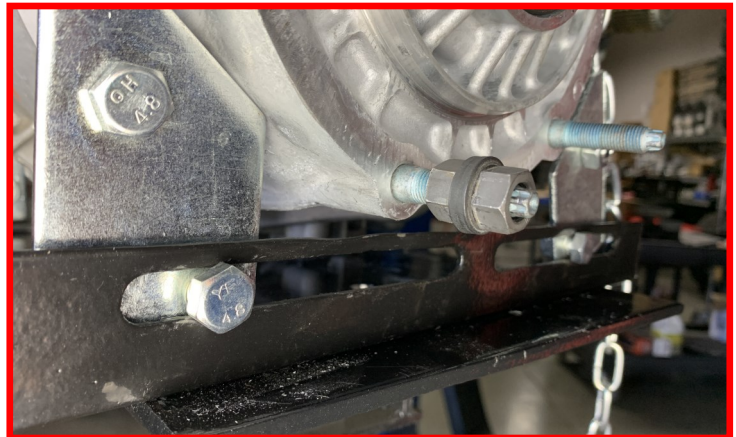


Carefully remove the transfer case. If a transmission jack isn't present it is highly suggested that helpers are available to help remove the transfer case from vehicle.

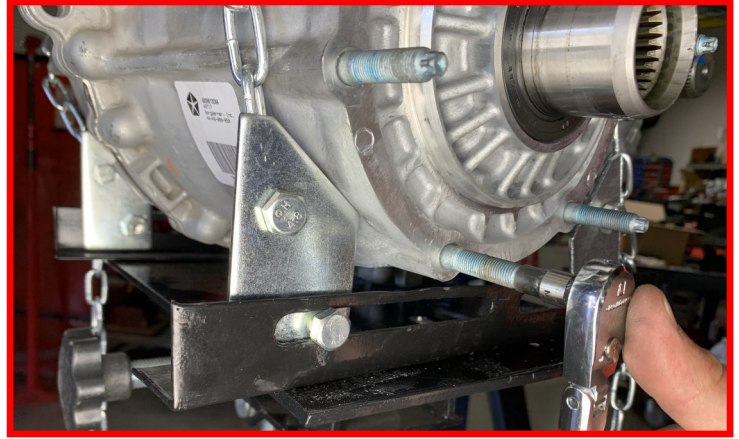


Once the transfer case is removed from vehicle, remove the factory mounting studs. There are two ways to remove the studs.

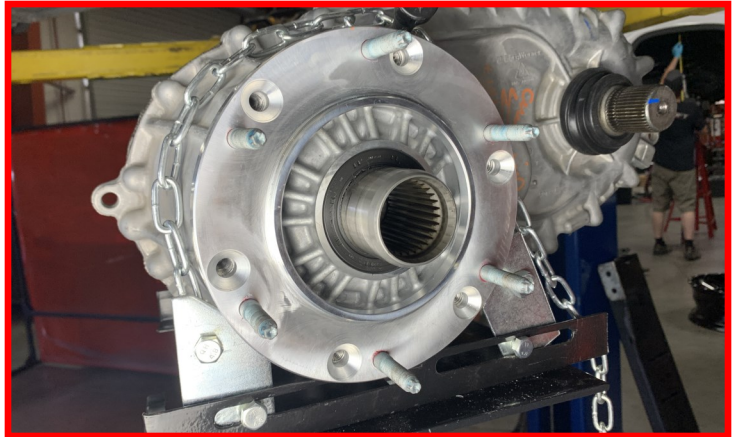
Option 1: Double nut the stud by tightening the nuts together and backing the inner nut out. This will unthread the stud.



Option 2: Using the splines and an appropriate socket, unthread the stud.

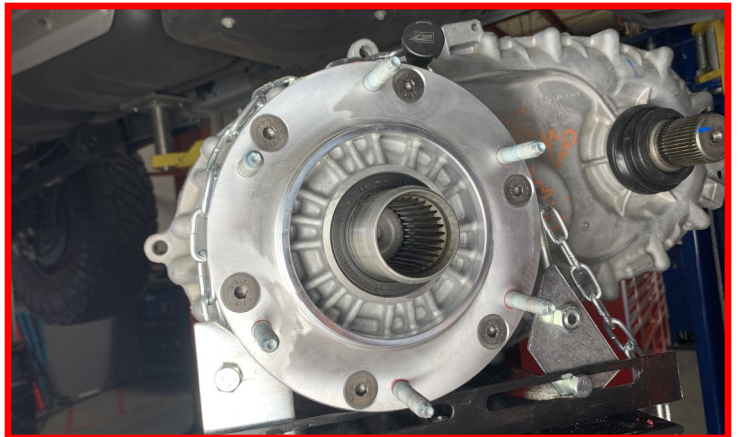


Install the **supplied transfer clocking ring**. It may be necessary to rotate the ring until all the mounting holes align.



Install the supplied **M10 flat head bolts** using thread locker.

Torque to the bolts **40 ft-lbs**.



Install transfer case.

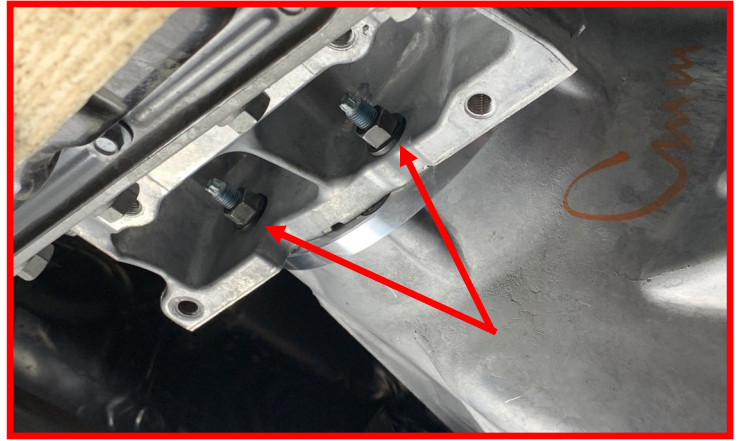
Note: Ensure the mounting surfaces are clear of dirt/debris and there isn't any harnesses hanging between the transmission and the transfer case.



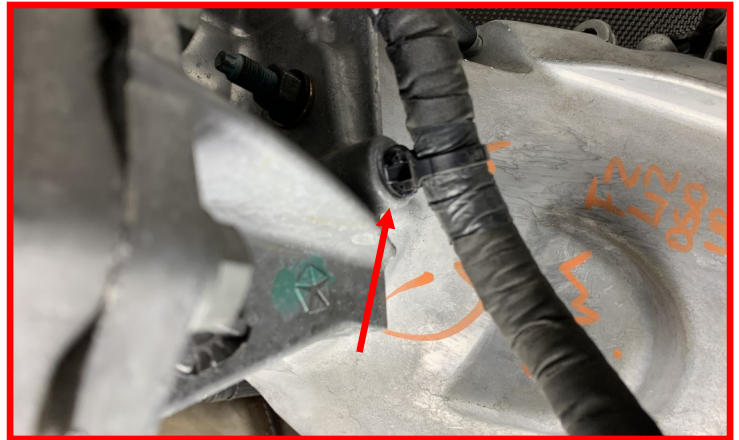
With the transfer case installed and mated back to the transmission, installed the (6) supplied 3/8" locking nuts and flat washers.

Torque the nuts to 55 ft-lbs.

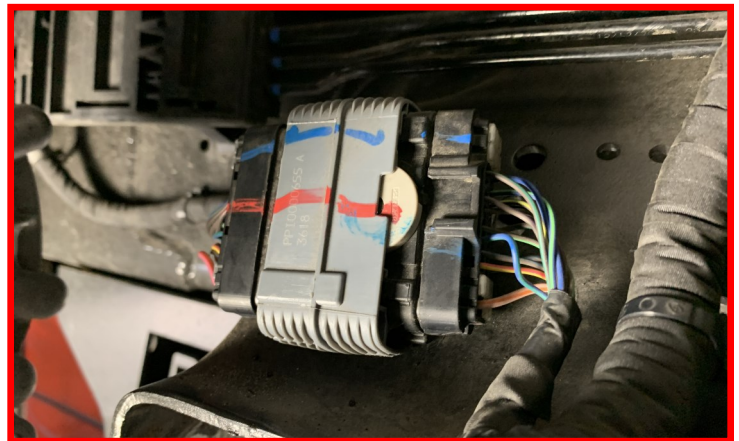
Note: Ensure the mounting surfaces are clear of dirt/debris and there isn't any harnesses hanging between the transmission and the transfer case.



Remove the transfer case harness clip that is located on the driver side of the transmission.

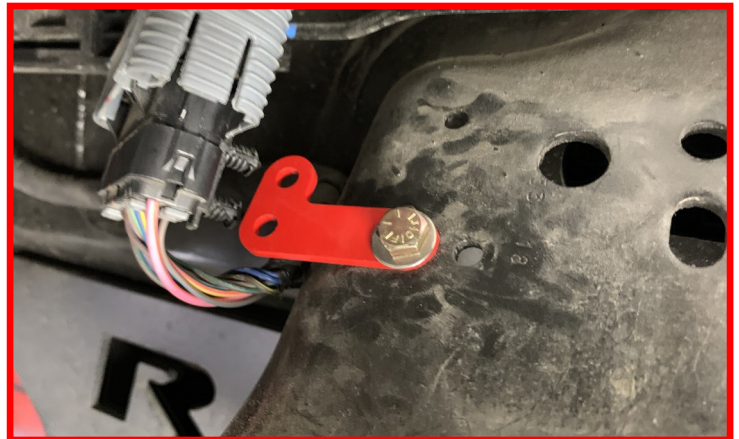


Remove the harness connection from the driver side transmission crossmember mounting.



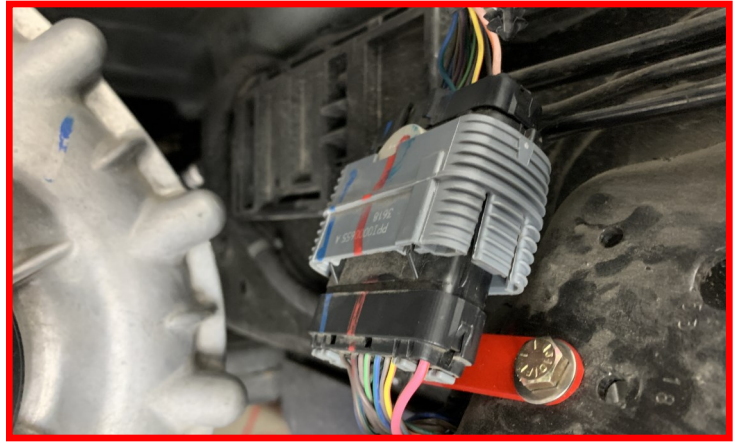
With the connector out of the way, install the connector relocation bracket using the supplied M6 x 20mm bolt, locking nut and washers.

Do not fully tighten at this time.



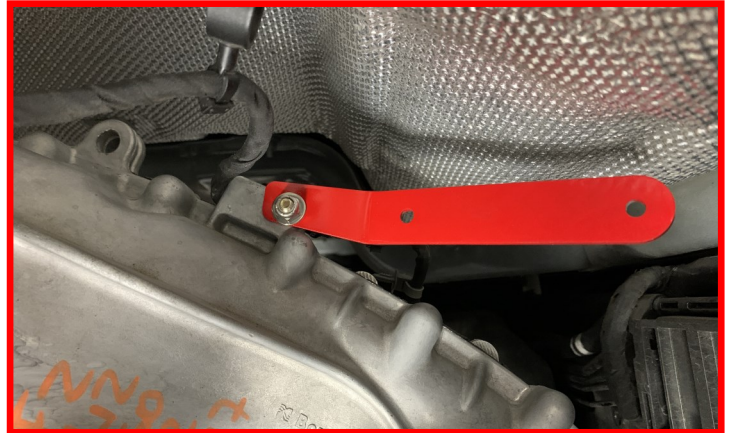
Install the harness connector onto the relocation bracket.

Torque the 1/4" hardware to **15 ft-lbs.**



Install the **harness relocation bracket** using the supplied **M6 x 25mm bolt, locking nut and washers** into the hole that the retaining clip was removed from.

Do not fully tighten at this time.



Install the harness that was attached to the top of the transmission crossmember onto the harness relocation bracket.

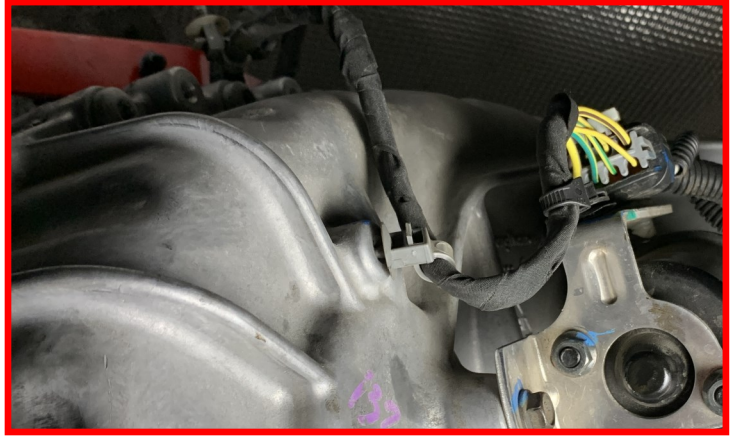
Torque the M6 hardware to **15 ft-lbs.**



Install the transfer case shift solenoid connector.



Install the **transfer case harness retaining clip** on the rear of the transfer case.

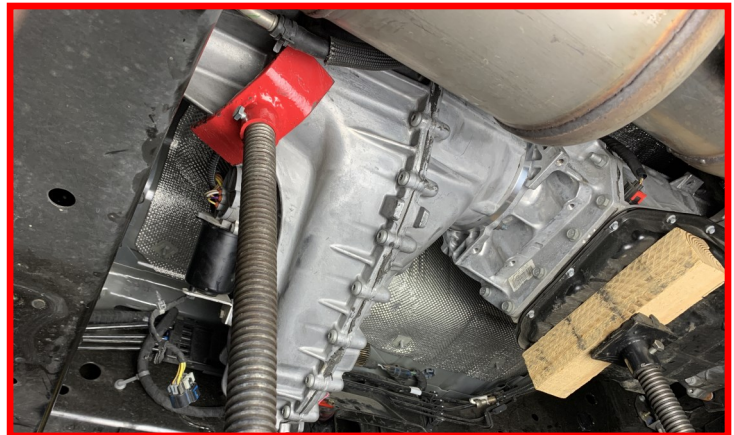


Install the transfer case **harness retaining clip** located on the top of the transfer case.



Using a suitable jack, support the transfer case again. Be sure to allow yourself ample room around the transfer case.

With the transfer case supported, remove the transmission support.

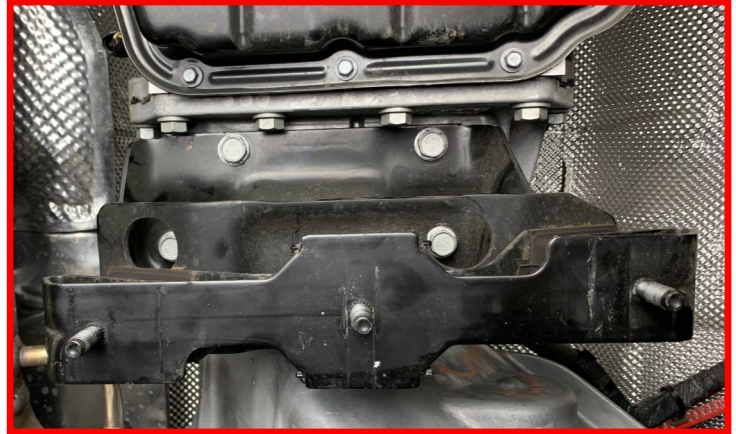


Install the transmission mount using the (4) factory bolts.

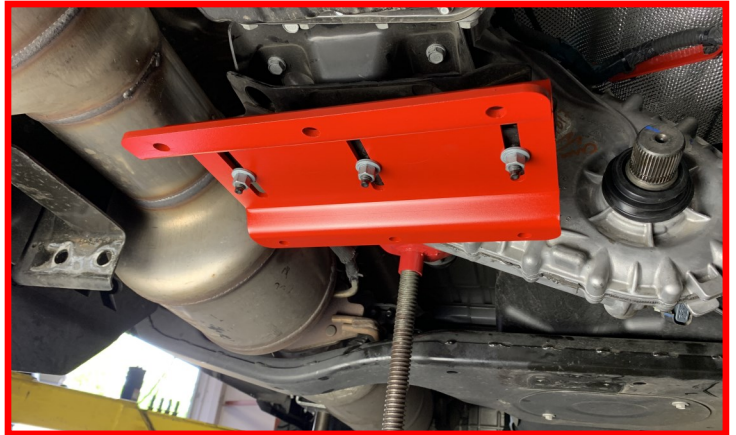


Tighten the transmission mount bolts.

Torque the hardware to **40 ft-lbs.**



Install the provided **transmission mounting plate** using the factory transmission mount nuts. Do not tighten at this time.



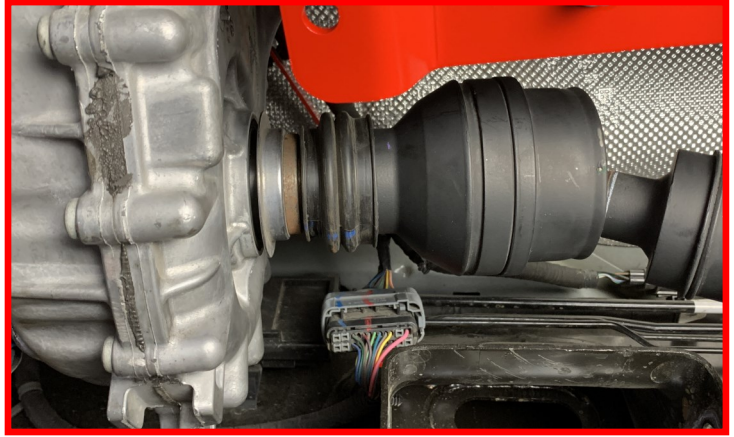
Ensure that the **mount** is installed with the slope facing towards the rear of the vehicle.



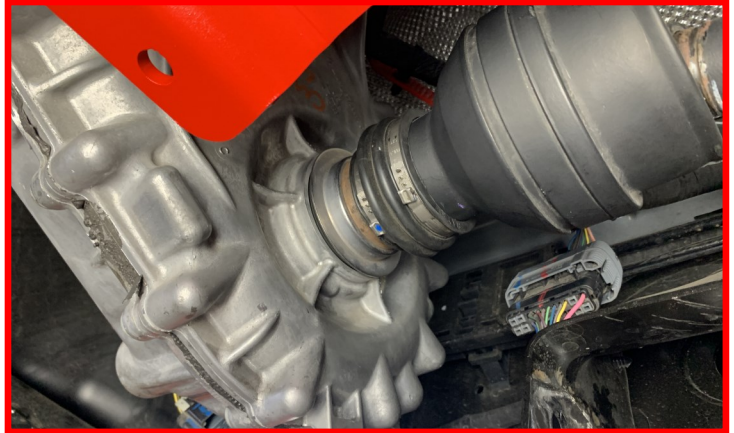
Install the front driveline onto the transfer case. Ensure the retaining clip is fully seated.



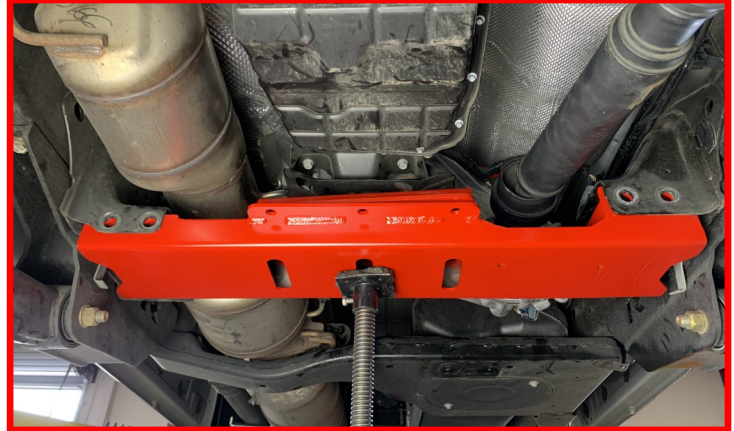
Slide the dust boot back over the front output splines.



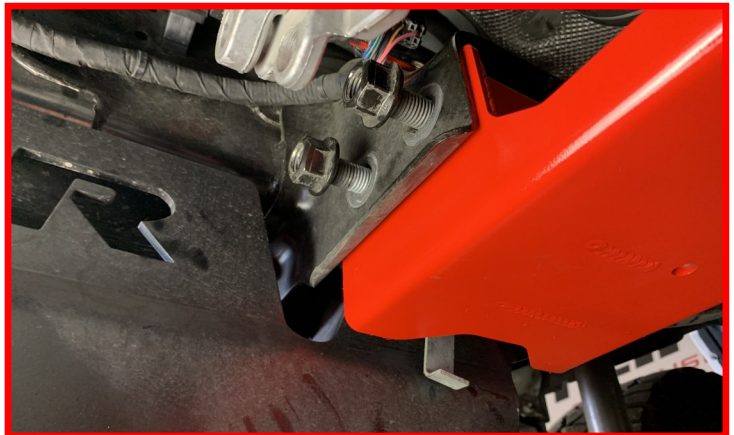
Install the supplied clamp onto the dust boot and joint housing.



Install the replacement transmission crossmember.

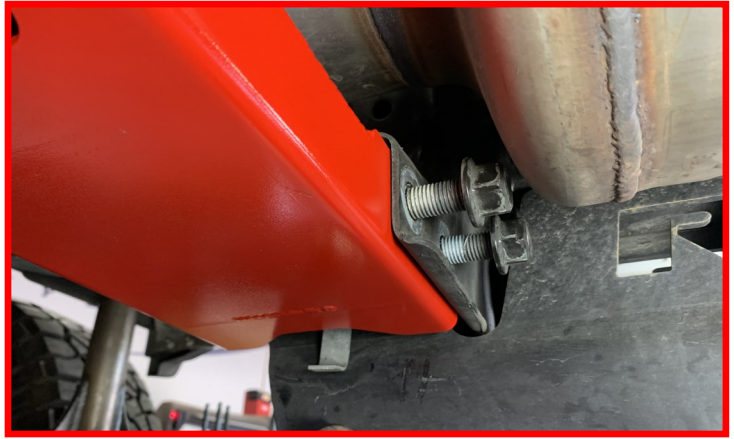


Using the factory transmission crossmember hardware, install the driver side from front to rear.

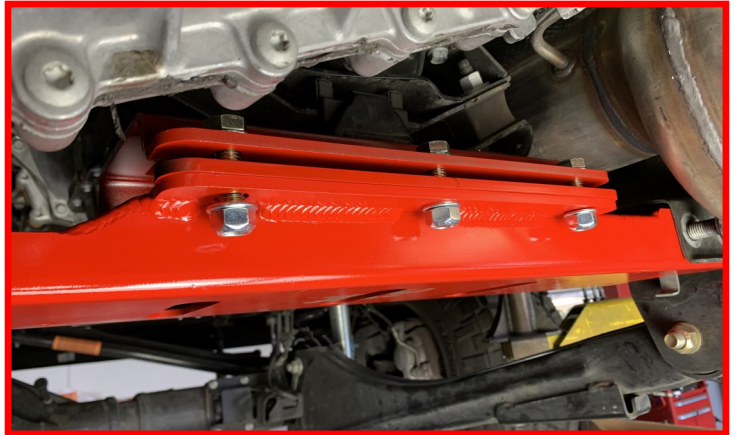


Using the **factory transmission crossmember hardware** install the passenger side from front to rear. This will aid in removal if service needs to be performed.

Torque the crossmember bolts to **130 ft-lbs.**



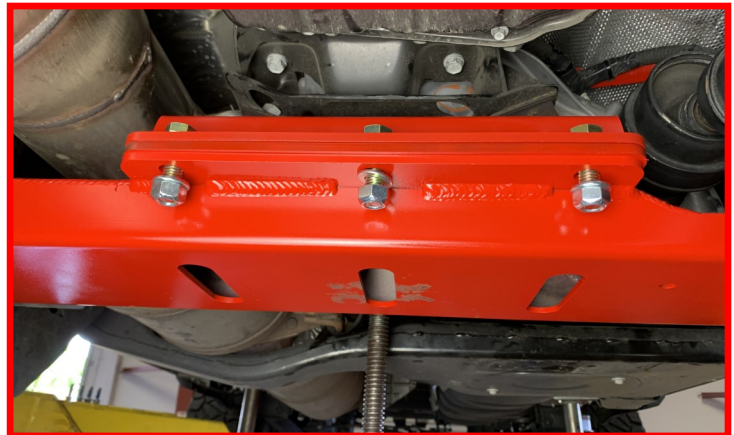
Install (3) supplied M12 bolts, (3) locking nuts and (6) flat washers through the rear holes on the **transmission mounting plate, mounting plate spacer and the transmission crossmember.** Do not tighten at this time.



Install (3) supplied M12 bolts, (3) locking nuts and (6) flat washers through the front holes on the **transmission mounting plate, mounting plate spacer and the transmission crossmember.** Lower the transmission down on top of the mount.

Torque the M12 hardware to **80 ft-lbs.**

Torque the (3) transmission mounting nuts to **35 ft-lbs.**

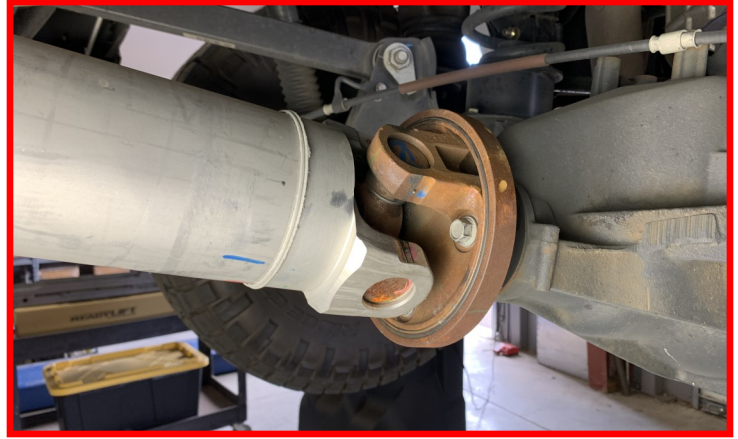


Install the rear driveshaft into the tail shaft housing in the transfer case.



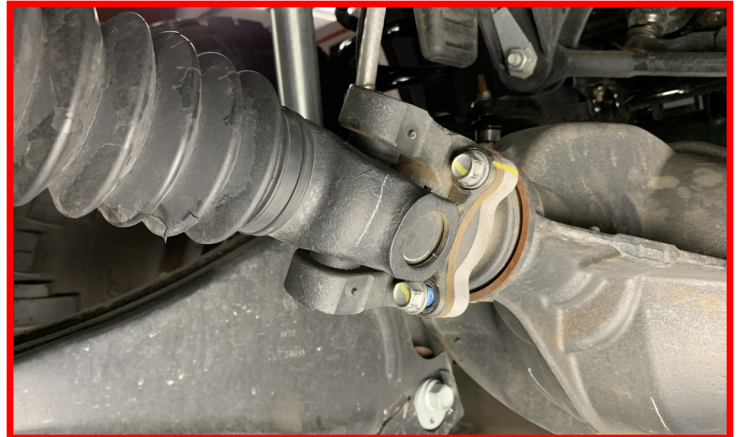
Install the rear driveshaft to the pinion flange lining up the previous marks using the factory hardware and thread locker.

Torque the bolts to **40 ft-lbs.**



Using the factory hardware and thread locker, install the drive shaft to the pinion flange lining up the previous marks.

Torque the bolts to **40 ft-lbs.**



Install the front wheels. Lower the vehicle to the ground. Torque the lug nuts to the wheel manufacturers specs. Torque the lower shock hardware to **90 ft-lbs.**, the radius arms and track bar hardware to **200 ft-lbs.**

With everything tightened and torqued to specifications, set the wheels straight. Do so by loosening the tie rod pinch bolt. Rotate the adjuster until the steering wheel is straight with the wheels and tighten. If the steering wheel is not centered properly, the ABS/traction control lights may activate. Turn the wheels from lock to lock and make sure the brake lines and ABS routing clears all suspension components adequately. Reposition if necessary.

Rear Installation

Block the front wheels for safety and raise the rear of the vehicle. Place jack stand under the frame rails in front of the rear lower control arm links.

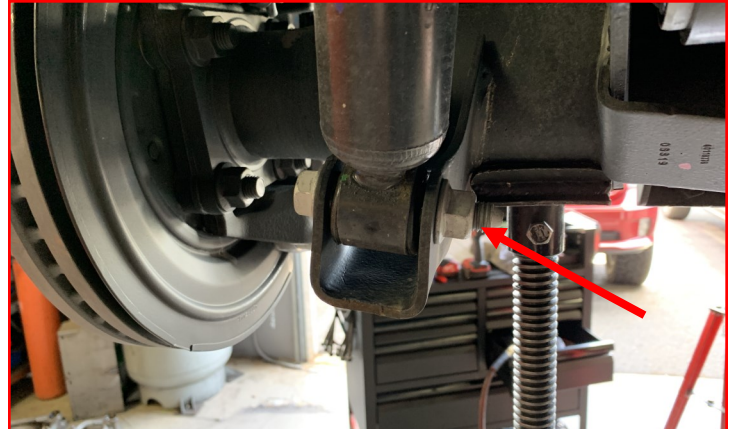
Place a jack under the axle for support. Remove the rear wheels.

Remove the sway bar end links. Discard both end links and hardware.

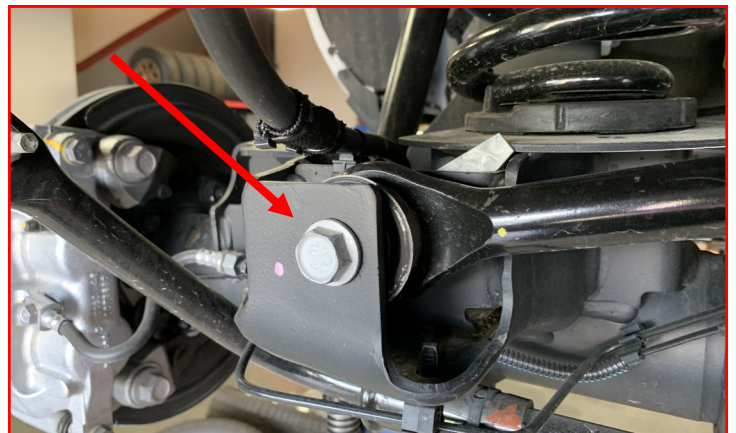


Note: Ensure axle is supported properly.

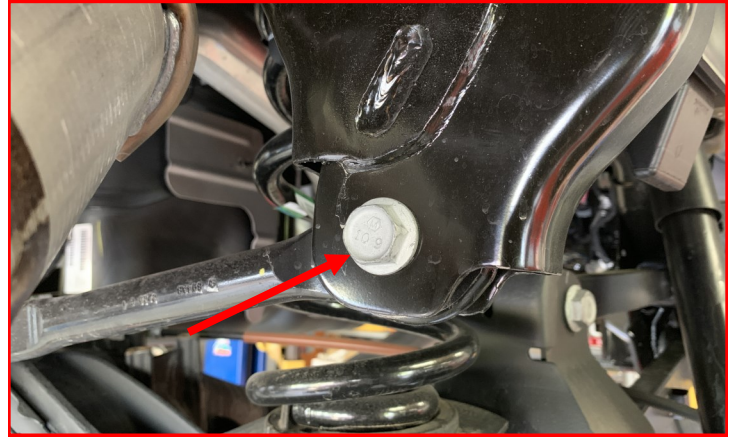
Remove both frame and axle **shock mounting bolts**. Remove shock from vehicle and discard properly. Retain factory hardware.



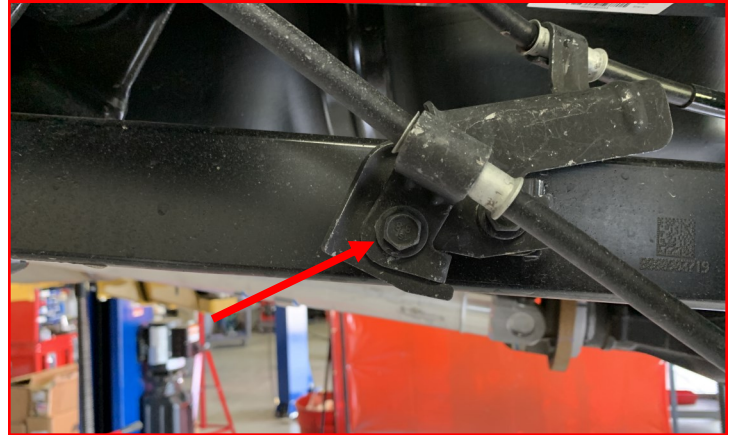
Loosen the **track bar mounting bolt** at the axle.



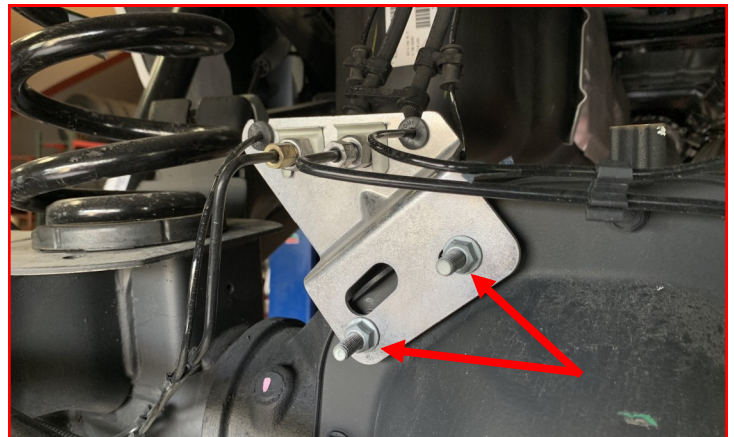
Remove the upper **track bar mounting bolt**.



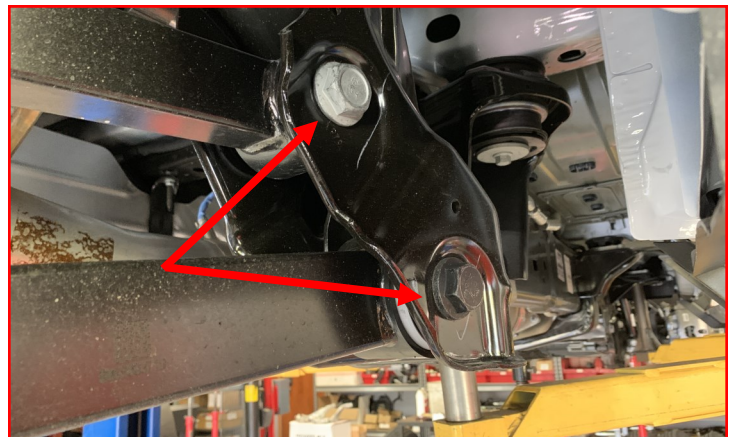
Remove **parking brake bracket mounting bolts** from the lower control arm on the driver side. Retain hardware.



Remove brake line bracket from axle. This will allow the ABS sensor harness and brake line to have slack when lowering the axle.



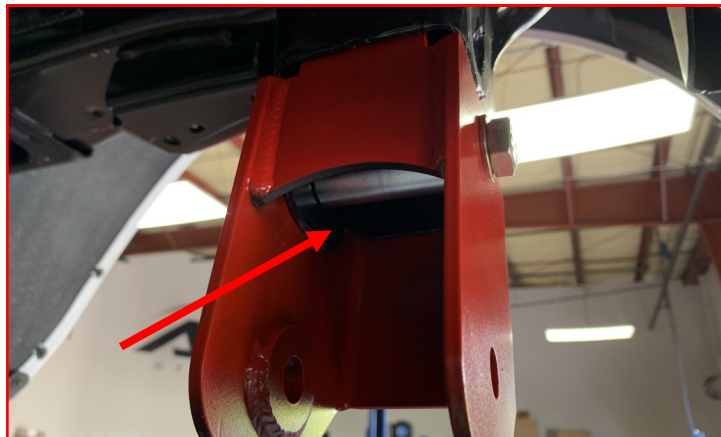
Loosen but do not remove the **upper and lower control arm bolts** on the axle and the frame pockets.



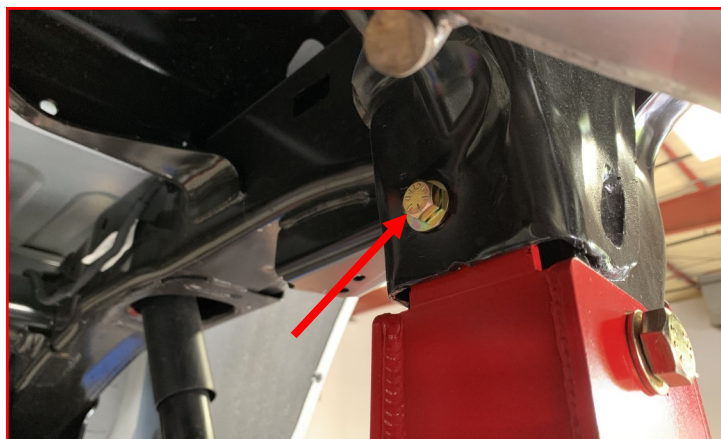
Lower the axle just enough to remove the springs.



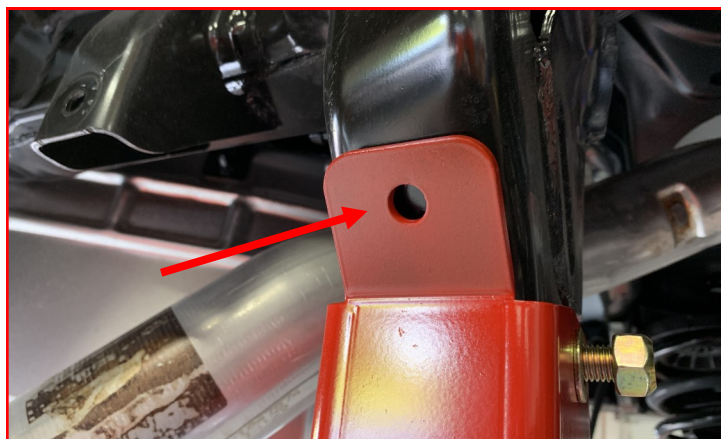
Install track bar bracket using the **14mm x 110mm bolt, washers, and c-lock nut** and **crush sleeve** in the track bars original location.



Install the **3/8" bolt, washer** in the inside hole.



Drill hole on outside of factory track bar mount using 3/8" drill. Install the **3/8" bolts, washers and c lock nut** on the outside hole. Tighten 3/8" hardware and torque to **45 ft-lbs**. Torque the factory hardware to **100 ft-lbs**.



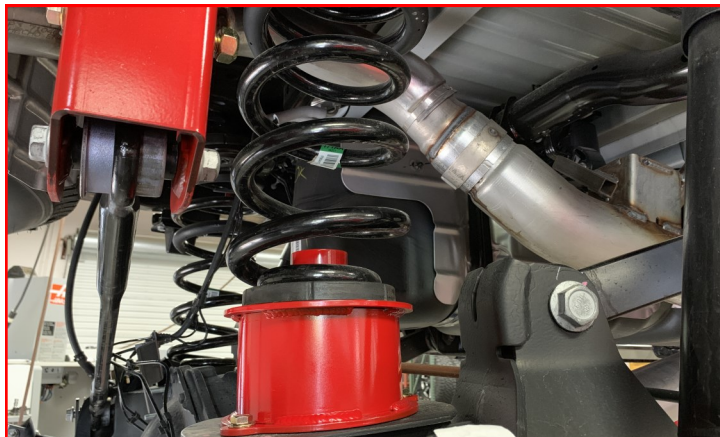
Install rear track bar into track bar bracket using factory hardware. Do not tighten at this time.

Install rear coil spring spacers using **3/8" bolts, washers, and c-lock nuts.**

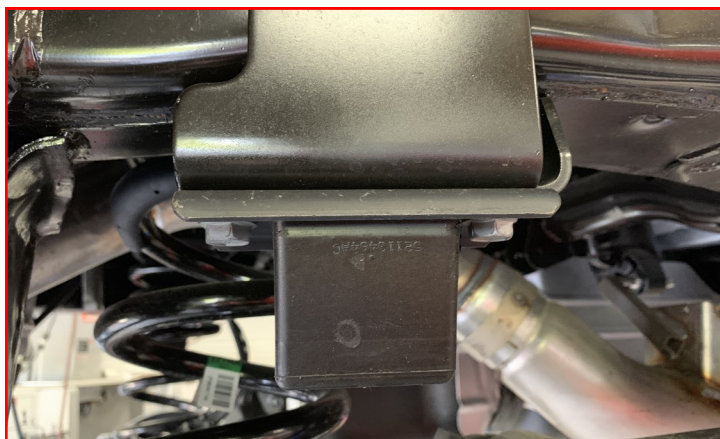
Torque to **45 ft-lbs.**



Install the replacement rear coil springs with factory isolators onto the spacers. Raise axle to hold coil springs in place.



Remove the factory bump stops. Retain factory hardware.



Install the **bump stop extension** onto the frame using **factory hardware.**



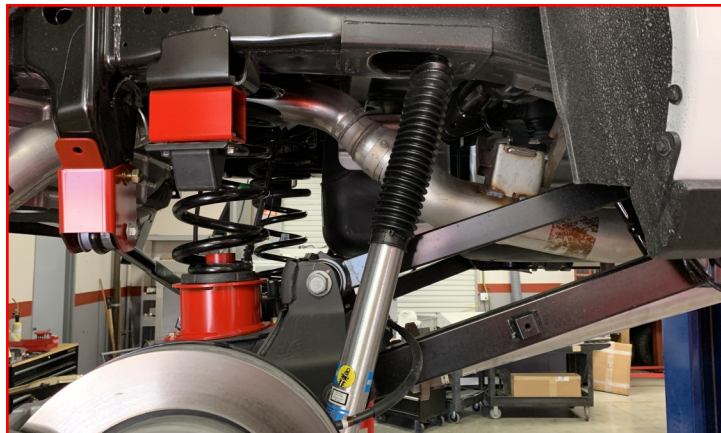
Install the bump stops using **3/8" bolts, washers and c-lock nuts.**

Torque hardware to **30 ft-lbs.**



Install the **provided Falcon rear shocks** using the **factory hardware** on the bottom and the **provided hardware** on the top of the shock. Do not tighten at this time.

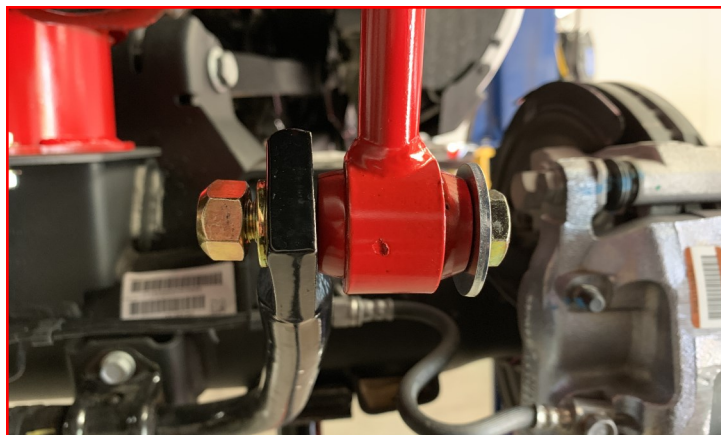
***Your shock brand may differ from the picture shown.**



Install the sway bar end links using **M12 bolts, washers, and c-lock nuts.** Ensure the fender washer is installed on the outside of the bushing. Do not tighten at this time.

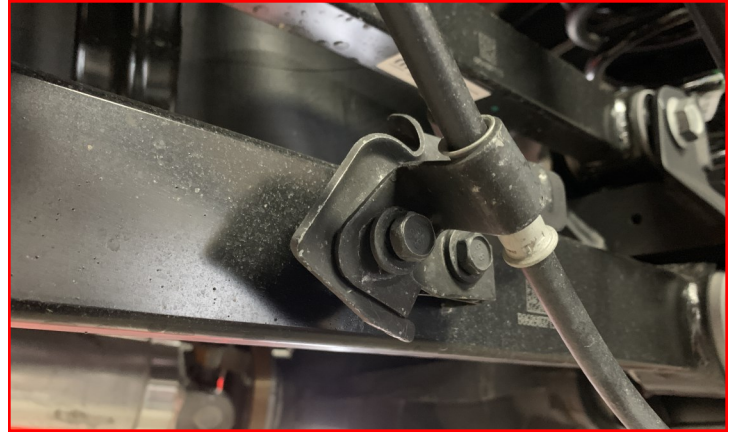


Install the sway bar end links using **M12 bolts, washers, and c-lock nuts.** Ensure the fender washer is installed on the outside of the bushing. Do not tighten at this time.



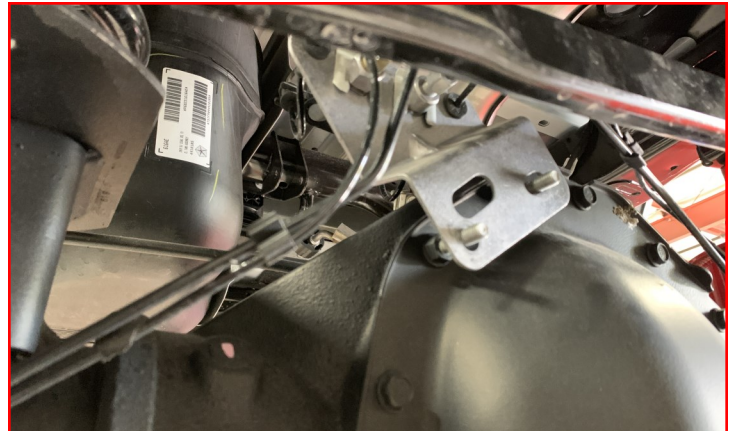
Install the parking brake cable bracket using the **factory hardware**.

Torque to **10 ft-lbs**.



Install ABS sensor harness and brake line bracket onto axle.

Torque to **10 ft-lbs**.



*****Note: Some models have a torque shock located on the differential. This will need to be removed for the function of this kit. *****



Install the rear wheels and lower vehicle to the ground. Torque the lug nuts to the wheel manufacturer specs. Torque the upper shock stem to **30 ft-lbs**, lower shock bolts to **90 ft-lbs**, sway bar end links to **45 ft-lbs**, bump stop extension to **30 ft-lbs**, parking brake bracket **10 ft-lbs**, track bar mounting bolts to **100 ft-lbs** and the upper and lower control arm bolts to **200 ft-lbs**.

With everything tightened and torqued to specifications, attach the vehicles negative power source.



FAILURE TO PERFORM THE POST INSPECTION CHECKS MAY RESULT IN VEHICLE COMPONENT DAMAGE AND/OR PERSONAL INJURY OR DEATH TO THE DRIVER AND/OR OTHERS.

Final Checks & Adjustments

Once the vehicle is lowered to the ground, check all parts which have rubber or urethane components to ensure proper torque. Torque lug nuts to the wheel manufacturer specs. Move vehicle backwards and forwards a short distance to allow suspension components to adjust. Turn the front wheels completely left then right and verify adequate tire, wheel, brake line, and ABS wire clearance. Test and inspect steering, brake and suspension components for tightness and proper operation. Inspect brakes hoses and ABS lines for adequate slack at full extension, adjust as necessary.

RECHECK ALL HARDWARE FOR PROPER TORQUE VALUES AFTER 500 MILES, AND THEN PERIODICALLY AT EACH SERVICE INTERVAL THERAFTER.

Vehicle Handling Warning

Increasing the height of your vehicle raises the center of gravity and can affect stability and control. Use caution on turns and when making steering corrections.

Vehicles with larger tires and wheels will handle differently than stock vehicles. Take time to familiarize yourself with the handling of your vehicle.

Wheel Alignment/Headlamp Adjustment

It is necessary to have a proper and professional wheel alignment performed by a certified alignment technician. Align the vehicle to factory specifications. It is recommended that your vehicle alignment be checked after any off-road driving.

In addition to your vehicle alignment, for your safety and others, it is necessary to check and adjust your vehicle headlamps for proper aim and alignment. If the vehicle is equipped with active or passive safety/collision monitoring and/or avoidance systems including, but not limited to, camera- or radar-based systems, check and adjust your vehicle's systems for proper aim and function.