



67-52420CV 2022 Toyota Tundra CV Axle Kit

IF your ReadyLIFT® product has a damaged or missing part, please contact customer service directly and a new replacement part will be sent to you immediately. For warranty issues, please return to the place of installation and contact ReadyLIFT.

(877) 759-9991

MON-FRI 7AM-4PM PST

OR

EMAIL: support@readylift-ami.COM

WEBSITE: ReadyLIFT.COM

****Please retain this document in your vehicle at all times.****

READYLIFT "NO HASSLE" PRODUCT WARRANTY

This unique "no hassle" product warranty proves out commitment to the quality of every product the ReadyLIFT produces. ReadyLIFT product warranty only extends to the Original Purchaser of any ReadyLIFT product. If it breaks, we will give you a new part.

READYLIFT "NO HASSLE" WARRANTY PROCEDURES

Any ReadyLIFT products containing missing or defective components will be covered under warranty by ReadyLIFT. Please call 800-549-4620 to initiate a warranty claim. Rest assured our customer service team will urgently address the matter and expedite the replacement parts. In the event of a defective product, ReadyLIFT may request a return of the defective product (at ReadyLIFT's expense) so the quality team can analyze the nature of the defect. Returning defective product will not delay the replacement part delivery.

ReadyLIFT leveling kit, block kits, and lift kit products are NOT intended for off-road abuse. Any abuse or damage as a result of off-road use voids the warranty of the ReadyLIFT product. Exception: ReadyLIFT Jeep SST and Terrain Flex Lift Kits are designed for normal off-road use to compliment the Jeep vehicle's off-road capability. All Jeep Lift Kit products are covered under warranty when used in recreational off-road environments.

Warranty does not apply to discontinued, clearance or outlet products. Wearable components including but not limited to, shocks, ball joints, heim joints, bushings, and steering extensions, are covered for up to 1-year. Labor, installation, surcharges or any other applicable fees from the original purchase are non-refundable. ReadyLIFT is not responsible for any consequential damage to the vehicles.

ReadyLIFT reserves the right to change, modify, or cancel this warranty without prior notice.



READ INSTRUCTIONS THOROUGHLY AND COMPLETELY BEFORE BEGINNING INSTALLATION.

INSTALLATION BY A CERTIFIED PROFESSIONAL MECHANIC IS HIGHLY RECOMMENDED.

READYLIFT® IS NOT RESPONSIBLE FOR ANY DAMAGE OR FAILURE RESULTING FROM IMPROPER INSTALLATION.

Safety Warning

MISUSE OF THIS PRODUCT COULD LEAD TO INJURY OR DEATH.

Suspension systems or components that enhance the on and off-road performance of your vehicle may cause it to handle differently than it did from the factory. Extreme care must be used to prevent loss of control or vehicle rollover during abrupt maneuvers.

Always operate your vehicle at reduced speeds to ensure your ability to control your vehicle under all driving conditions. Failure to drive safely may result in serious injury or death to driver and passengers.

Driver and passengers must ALWAYS wear your seat belts, avoid quick sharp turns and other sudden maneuvers. ReadyLIFT Suspension does not recommend the combined use of suspension lifts, body lifts, or other lifting devices.

You should never operate your vehicle under the influence of alcohol or drugs.

Constant maintenance is required to keep your vehicle safe. Thoroughly inspect your vehicle before and after every off-road use.

It is the responsibility of the retailer and/or the installer to review all state and local laws, with the end user of this product, related to bumper height laws and the lifting of their vehicle before the purchase and installation of any ReadyLIFT products.

It is the responsibility of the driver/s to check their surrounding area for obstructions, people, and animals before moving the vehicle.

All raised vehicles have increased blind spots; damage, injury and/or death can occur if these instructions are not followed.

Installation Warning

All steps and procedures described in these instructions were performed while the vehicle was properly supported on a two post vehicle lift with safety jacks.

Use caution during all disassembly and assembly steps to insure suspension components are not over extended causing damage to any vehicle components and parts included in this kit.

Included instructions are guidelines only for recommended procedures and are not meant to be definitive. Installer is responsible to insure a safe and controllable vehicle after performing modifications.

ReadyLIFT Suspension recommends the use of an OE Service Manual for model/year of vehicle when disassembly and assembly of factory and related components.

Unless otherwise specified, tighten all bolts and fasteners to standard torque specifications listed within the OE Service Manual.

Suspension components that use rubber or urethane bushings should be tightened with the vehicle at normal ride height. This will prevent premature wear or failure of the bushing and maintain ride comfort.

Larger tire and wheel combinations may increase leverage on suspension, steering, and related components.

Due to payload options and initial ride height variances, the amount of lift is a base figure. Final ride height dimensions may vary in accordance to original vehicle ride height. Always measure the vehicle ride height prior to beginning installation.

SAEJ2492 Warning

By installing this product, you acknowledge that the suspension of this vehicle has been modified. As a result, this vehicle may handle differently than that of factory-equipped vehicles. As with any vehicle, extreme care must be used to prevent loss of control or roll-over during sharp turns or abrupt maneuvers. Always wear seat belts, and drive safely, recognizing that reduced speeds and specialized driving techniques may be required. Failure to drive this vehicle safely may result in serious injury or death. Do not drive this vehicle unless you are familiar with its unique handling characteristics and are confident of your ability to maintain control under all driving conditions. Some modifications (and combinations of modifications) are not recommended and may not be permitted in your state. Consult your owner's manual, the instructions accompanying this product, and state laws before undertaking these modifications. You are responsible for the legality and safety of the vehicle you modify using these components.

Due to payload options and initial ride height variances, the amount of lift is a base figure. Final ride height dimensions may vary in accordance to original vehicle ride height. Always measure the vehicle ride height prior to beginning installation.

A lifted vehicle may have different headlight aim performance. ReadyLIFT recommends marking and recording the headlight beam position before kit installation and then adjusting, if necessary, the headlamps to the same height settings after kit installation. Set the vehicle on a level surface 10' to 15' from a solid wall or garage door. (This is a general distance with some manufacturers requiring different distances.) Note the top height of the low beam's bright spot, the top of the most intense part of the beam, for driver and passenger side. Height may vary from side to side. Repeat this procedure and adjust after lift kit is installed. Adjust if the aim is off by turning the adjusters gradually (a quarter of a turn) and looking to see where the new alignment falls. It may be easier to block one headlamp while adjusting the other. Consult the owner operation manual for procedures to adjust headlights - many automakers offer headlight aiming specs. Some states have their own specifications when it comes to headlight aim, so it's best to follow those rules when aligning headlights.

IMPORTANT NOTE:

PRE-INSTALLATION MEASUREMENTS:

It is imperative that you record the following measurements and factory components in the tables below. ReadyLIFT tests and records as much data from each application as available at the time of product development. Vehicle manufacturers may change components or add models with different options. Recording and not exceeding the fender-to-hub-center ReadyLIFT calls out will ensure the lift on the vehicle is correct.

These measurements will affect the performance of this lift kit. Failure to ensure proper stock conditions may result in over lifting, causing premature failure of axles, CV boots and drivetrain. Over lifting a vehicle will also result in an incorrect wheel alignment. This will wear tires incorrectly. Incorrect alignment will cause poor vehicle handling issues including but not limited to under steer. Over lifting will also cause a shock top off condition resulting in poor ride quality accompanied by pops and clunks which are symptoms of prematurely wearing components.

Failure to adjust head lamps may cause dangerous driving conditions for you and other drivers on the road. Record the head lamp position before the installation of this lift or leveling kit and adjust to original factory position after the completion to ensure a safe and enjoyable experience.

VEHICLE HEIGHT MEASUREMENTS

	Driver Before	Driver After	Passenger Before	Passenger After
Front				
Rear				

****MEASUREMENT IS TO BE PERFORMED FROM CENTER OF HUB TO FENDER EDGE STRAIGHT UP FROM HUB.****

RECORD HEAD LAMP MEASUREMENTS

Driver Before	Driver After	Passenger Before	Passenger After

BILL OF MATERIALS

COMPONENTS	
DESCRIPTION	QTY
CV AXLE ASSEMBLY, LEFT	1
CV AXLE ASSEMBLY, RIGHT	1



Before starting installation: ReadyLIFT Suspension highly recommends that the installation of this product be performed by a professional mechanic with experience working on and installing suspension products. Professional knowledge and skill will typically yield the best installation results. If you need an installer in your area, please contact ReadyLIFT Suspension Customer Service to find one of our "Pro-Grade" Dealers.

INSTALLATION BY A PROFESSIONAL IS HIGHLY RECOMMENDED.

- A Factory Service Manual for your specific Year / Make / Model is highly recommended for reference during installation.
- All lifted vehicles may require additional driveline modifications and / or balancing.
- A vehicle alignment is REQUIRED after installation of this product.
- Speedometer / Computer recalibration is required if changing +/- 10% from factory tire diameter.
- A vehicle lift or hoist greatly reduces installation time. Installation time estimates are based on an available vehicle hoist.
- Vehicle must be in excellent operating condition. Repair or replace any and all worn or damaged components prior to installation.

*****Parts shown in red for picture clarification only*****

ReadyLIFT recommends all steps and procedures described in these instructions be performed while the vehicle is properly supported on a two post vehicle lift with safety jacks.

Otherwise, park vehicle on a clean flat surface and block the rear wheels for safety. Engage the parking brake.

Disconnect the vehicle power source at the ground terminal on the battery.

Lock the steering wheel in the straight forward position with the column lock or steering wheel locking device.

Raise the front of the vehicle and support with safety jack stands at each frame rail behind the lower control arms. Remove the front wheels. Starting with the front of the vehicle, all steps are to be completed on both sides of the vehicle unless instructed.

Loosen but **DO NOT** remove the four (4) (two on each side) **sway bar bolts**.



Remove the **sway bar end link bolt** from the lower control arm and slide the **end link** off of its perch.

Retain factory hardware.



Ensure the hub is supported with a suitable jack.

Remove the two (2) **lower ball joint bolts**.

Retain factory hardware.



Loosen but **DO NOT** remove **inner control arm nuts**.



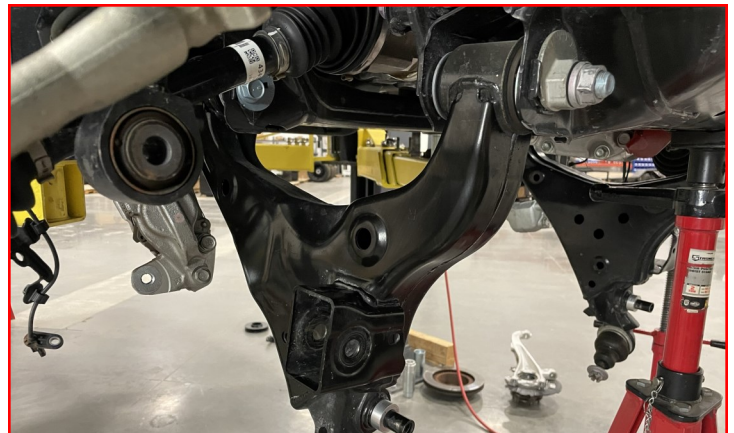
Remove the lower shock bolt.

Retain factory hardware.



Carefully swing the lower control arm down and out of the way.

NOTE: IT IS EXTREMELY IMPORTANT THAT THE HUB IS SUPPORTED PRIOR TO THIS STEP. FAILURE TO SUPPORT THE HUB MAY RESULT IN DAMAGE TO COMPONENTS OR POSSIBLE INJURY.



Remove the CV axle dust shield.

Retain factory cap.



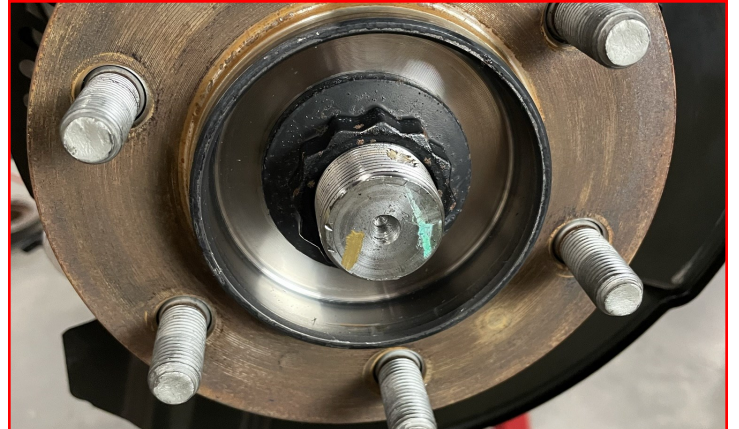
Remove the **cotter pin** and **nut retainer**.

Retain factory hardware.



Remove the **axle nut** and release the axle from the hub.

Retain factory hardware.

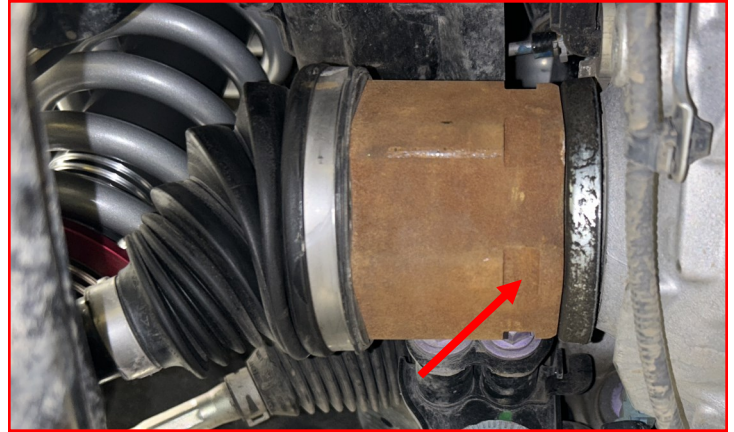


With the aid from a helper, pull hub assembly forwards toward the front of the vehicle.

Remove the outer axle splines from the hub assembly.



Using a chisel and a dead blow hammer, strike the groove in the outward direction to dislodge the spline.



DO NOT TRY TO PRY THE AXLE FROM THE DIFF HOUSING, THIS WILL DAMAGE THE HOUSING AND SEAL.

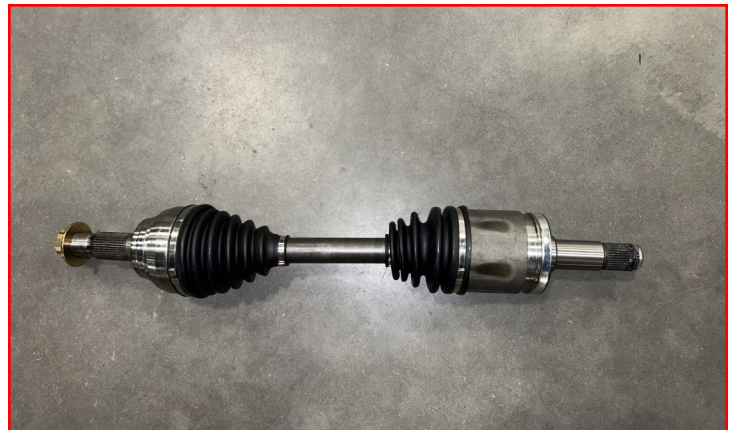


Remove the CV axle assembly from the vehicle.



Locate the replacement axle assembly. The axle are etch with the part number on the shaft. The **68-52420CVL** is the Left (driver) side and will be the shorter of the two.

The **68-52420CVR** is the Right (passenger) side and will be the longer to the two.



Insert the axle into the diff housing, be sure the splines are aligned prior to driving the axle in to place.

NOTE: THE AXLE MAY BE TOUGH TO INSTALL WITH ONE PERSON, ASK FOR HELP WHEN INSTALLING. GREASING THE RETAINER CLIP PRIOR TO INSTALL WILL AID IN THE INSTALLATION AS WELL.



Install the outer splines through the hub assembly, in the factory orientation.

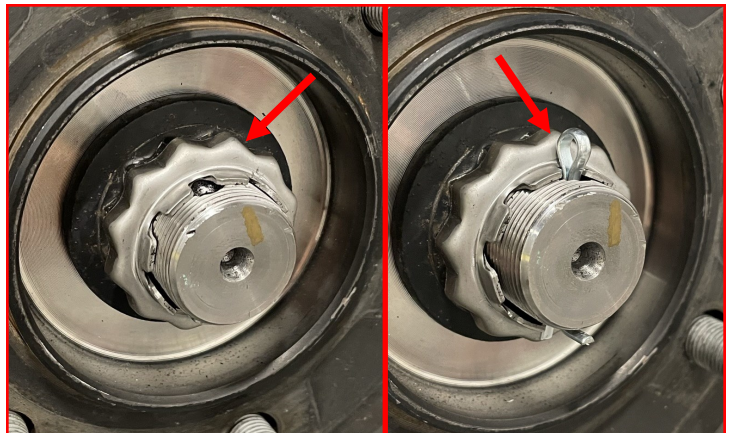


Install the supplied axle nut.

Torque the nut to factory specs.



Install the nut retainer and supplied cotter pin.



Install the factory axle nut dust shield.



Carefully raise the lower control arm up and into place.



Apply a small amount of medium duty thread locker to the **factory lower ball joint bolts**.

Torque the **lower ball joint bolts** to **115 ft-lbs**.



Raise the lower control arm enough to insert the **factory lower strut bolt** and **nut**. Install from front to rear.

DO NOT TIGHTEN AT THIS TIME.



Install the sway bar end link onto the lower control arm.

Torque the sway bar end link **factory hardware** to **80 ft-lbs**.



Install the front wheels and lower vehicle to the ground. Torque the lug nuts to the wheel manufacturer specs.

Torque the lower strut **factory hardware (2x)** to **115 ft-lbs**.

Torque the sway bar bracket **factory hardware** to **80 ft-lbs**.

Attach the vehicle negative power source.

With the steering wheel centered, turn the tie rod ends until the tires are straight. If the steering wheel is not centered properly, the ABS/traction control lights may activate. Turn the wheels from lock to lock and make sure the brake lines and ABS routing clears all suspension components adequately. Reposition if necessary.

Have wheel alignment performed by qualified alignment technician. Have the alignment set to the recommended specs at the end of the instructions.



FAILURE TO PERFORM THE POST INSPECTION CHECKS MAY RESULT IN VEHICLE COMPONENT DAMAGE AND/OR PERSONAL INJURY OR DEATH TO THE DRIVER AND/OR OTHERS.

Final Checks & Adjustments

Once the vehicle is lowered to the ground, check all parts which have rubber or urethane components to ensure proper torque. Torque lug nuts to the wheel manufacturer specs. Move vehicle backwards and forwards a short distance to allow suspension components to adjust. Turn the front wheels completely left then right and verify adequate tire, wheel, brake line, and ABS wire clearance. Test and inspect steering, brake and suspension components for tightness and proper operation. Inspect brakes hoses and ABS lines for adequate slack at full extension, adjust as necessary.

RECHECK ALL HARDWARE FOR PROPER TORQUE VALUES AFTER 500 MILES, AND THEN PERIODICALLY AT EACH SERVICE INTERVAL THERAFTER.

Vehicle Handling Warning

Increasing the height of your vehicle raises the center of gravity and can affect stability and control. Use caution on turns and when making steering corrections.

Vehicles with larger tires and wheels will handle differently than stock vehicles. Take time to familiarize yourself with the handling of your vehicle.

Wheel Alignment/Headlamp Adjustment

It is necessary to have a proper and professional wheel alignment performed by a certified alignment technician. Align the vehicle to factory specifications. It is recommended that your vehicle alignment be checked after any off-road driving.

In addition to your vehicle alignment, for your safety and others, it is necessary to check and adjust your vehicle headlamps for proper aim and alignment. If the vehicle is equipped with active or passive safety/collision monitoring and/or avoidance systems including, but not limited to, camera- or radar-based systems, check and adjust your vehicle's systems for proper aim and function.