



**IF YOUR ReadyLIFT PRODUCT IS MISSING A PART
OR HAS A DAMAGED PART, PLEASE
CONTACT CUSTOMER SERVICE DIRECTLY.**

A NEW REPLACEMENT PART WILL BE SENT TO YOU IMMEDIATELY

(877)759-9991

MON-FRI 7AM-5PM PST

OR

EMAIL: INFO@ReadyLIFT.COM

WEBSITE: ReadyLIFT.COM

****Please retain this document in your vehicle at all times****

ReadyLIFT Limited Lifetime NO Fine Print Warranty

This unique product warranty proves our commitment to the quality and reliability of every product that ReadyLIFT manufactures. The ReadyLIFT warranty does not include shock absorbers.

The ReadyLIFT product warranty only extends to the original purchaser of any ReadyLIFT product, if it breaks, we will give you a new part. Warranty does not apply to discontinued parts

Product purchased directly from ReadyLIFT has a 30 day return policy on uninstalled products from the date of purchase. Uninstalled product returns must be in the original ReadyLIFT packaging. Please call **(877)759-9991** to get an RGA# for any return. Customer is responsible for shipping costs back to ReadyLIFT. **Returns without RGA# will be refused.** Contact ReadyLIFT directly about any potentially defective parts prior to removal from vehicle. If the part in question is deemed warrantable an RGA# will be assigned and can be returned for repair or replacement. Replacement parts required prior to warranty claim completion must be purchased. Upon receipt and verification of deemed warranty parts claim, a credit or refund can then be processed to complete warranty claim transaction.

ReadyLIFT products are **NOT** intended for off-road abuse. Any damage or failure as a result from off-road abuse voids the warranty of the ReadyLIFT product. ReadyLIFT is **NOT** responsible for any subsequent damages to any related vehicle parts due to misuse, abuse, improper installation, or lack of maintenance. Furthermore, ReadyLIFT reserves the right to change, modify or cancel this warranty without prior notice.

www.ReadyLIFT.com

**Please read Instructions thoroughly and completely before beginning installation.
Installation by a certified mechanic is recommended.**

ReadyLIFT Suspension Inc. is NOT responsible for any damage or failure resulting from improper installation.

Safety Warning: Suspension systems or components that enhance the on and off-road performance of your vehicle may cause it to handle differently than it did from the factory. Extreme care must be used to prevent loss of control or vehicle rollover during abrupt maneuvers. Always operate your vehicle at reduced speeds to ensure your ability to control your vehicle under all driving conditions. Failure to drive safely may result in serious injury or death to driver and passengers. Driver and passengers must ALWAYS wear your seat belts, avoid quick sharp turns and other sudden maneuvers. ReadyLIFT Suspension Inc. does not recommend the combined use of suspension lifts, body lifts, or other lifting devices. You should never operate your vehicle under the influence of alcohol or drugs. Constant maintenance is required to keep your vehicle safe. Thoroughly inspect your vehicle before and after every off-road use.

Installation Warning: All steps and procedures described in these instructions were performed while the vehicle was properly supported on a two post vehicle lift with safety jacks. Use caution during all disassembly and assembly steps to insure suspension components are not over extended causing damage to any vehicle components and parts included in this kit. Included instructions are guidelines only for recommended procedures and are not meant to be definitive. Installer is responsible to insure a safe and controllable vehicle after performing modifications.

ReadyLIFT Suspension Inc. recommends the use of an OE Service Manual for model/year of vehicle when disassembly and assembly of factory and related components. Unless otherwise specified, tighten all bolts and fasteners to standard torque specifications listed within the OE Service Manual, or as referenced in the torque specification list provided in these instructions.

Suspension components that use rubber or urethane bushings should be tightened with the vehicle at normal ride height. This will prevent premature wear or failure of the bushing and maintain ride comfort. Larger tire and wheel combinations may increase leverage on suspension, steering, and related components. Due to payload options and initial ride height variances, the amount of lift is a base figure. Final ride height dimensions may vary in accordance to original vehicle ride height. Always measure the vehicle ride height prior to beginning installation.

Vehicle ride height chart

**Driver Front:
Stock height**

Lift installed

**Driver Rear:
Stock height**

Lift installed

**Pass. Front:
Stock height**

Lift installed

**Pass. Rear:
Stock height**

Lift installed

Bolt Size Millimeters	Torque Specs in FT/LB		Bolt Size SAE	Torque Specs in FT/LB	
	Metric Grade 8.8	Metric Grade 10.9		Grade 5	Grade 8
6mm	6	8	5/16	15	20
8mm	16	22	3/8	30	35
10mm	40	45	7/16	45	60
12mm	54	70	1/2	65	90
14mm	89	117	9/16	95	130
16mm	132	175	5/8	135	175
18mm	182	236	3/4	185	280

Installation Instructions (69-5475 & 69-5476)



Place vehicle securely on hoist or jack stands.



Raise hood to access battery and hose clamps on frame.



Disconnect wiring loom and hose clamp on passenger side.



Disconnect positive/negative terminals and hold down clamp.



Remove battery and plastic tray from truck .

Note: Safely and securely lift vehicle by frame. If working without an automotive hoist take added precaution to lift and support vehicle on a level surface. Lift the vehicle off of the ground on both driver and passenger sides to prevent unnecessary side to side pressure on suspension components.



Remove wheels/tires from vehicle.



Remove front skid plate to expose sway bar.

Installation Instructions (69-5475 & 69-5476)



Shows rear complete suspension view.



Remove splash guards at frame behind upper control arms.



Remove splash guards at frame in front of upper control arms



Unbolt ABS line bracket on top of upper control arms.



Disconnect sway bar at the frame mounts.



Remove cotter pin and loosen upper ball joint nut.



Separate upper ball joint from upper control arm.



Loosen upper control arm and remove, use caution.

Installation Instructions (69-5475 & 69-5476)

Note: Take extra precaution in the removal and installation of the factory upper control arm bolts, they are extremely long and there are electrical components and hoses in the way of this process. On the passenger side, front air bag sensor wiring is in close proximity to the fender well. You may also wish to unclip the coolant lines near the pass. fender well. Make sure to reattach any components removed in these steps upon completion of the upper control arm installation.

Remove upper control arm.



Loosen and remove lower strut mounting hardware.



Remove upper strut mounting nuts and remove entire unit.



It may be necessary to loosen lower control arm cam bolts.



Remove OE compression stops above lower control arms



Install provided spacers in front and rear locations.



Reinstall OE compression stops on to provided spacers.

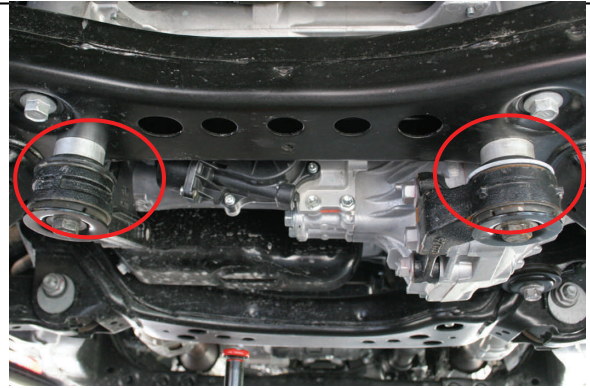


4WD only. Remove (2) front differential mounting bolts.

Installation Instructions (69-5475 & 69-5476)



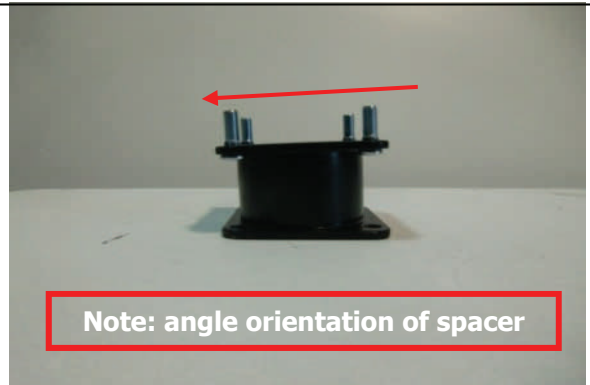
4WD Slowly lower to allow spacers to be placed as shown.



4WD Install new longer bolts to reattach and tighten.

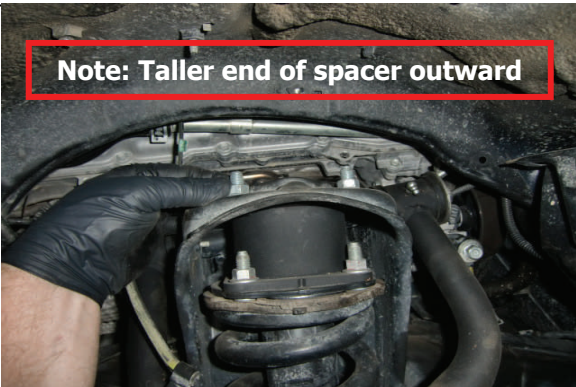


Install new upper strut spacer with OE hardware and torque.



Note: angle orientation of spacer

Note the orientation of the tapered upper spacer

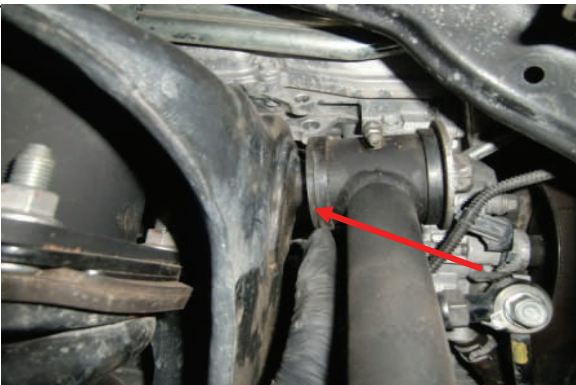


Note: Taller end of spacer outward

Reinstall strut into original location with provided hardware.



Position lower strut mount into position, use OE hardware.



Install new upper control arm, use **lg. washers** as shown.



Raise suspension and reattach upper ball joint to spindle.

Installation Instructions (69-5475 & 69-5476)



If lower control arm bolts were loosened, retighten now.



Attach ABS line to upper control arm with provided hardware.



Reinstall the splash guards (4) removed in the initial steps.



Make sure to grease ball joints and control arms.



Reinstall wheels/tires and lower to ground.



Now install sway bar drop brackets at frame w/new hardware



Reinstall lower skid plate now or after alignment is done.

**Rear Instructions
Next Page**

Rear Installation Instructions (69-5475 & 69-5476)



Work on one side at a time to prevent driveline damage.



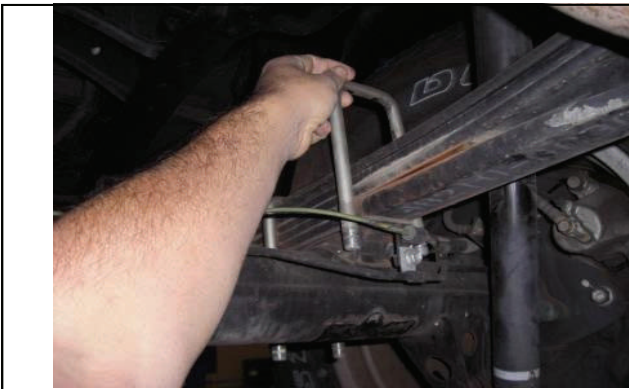
Disconnect ABS wiring brackets from axle.



Remove rear lower shock bolt and disconnect shock.



Remove u-bolt nuts and lower plate.



Carefully lower axle and remove u-bolts



Place new lift block into position between axle and leaf pack.



Raise axle and ensure locating pins are properly aligned.



Slide new u-bolts over leaf pack and bump stop bracket.

Rear Installation Instructions (69-5475 & 69-5476)



Attach lower mounting plate with provided hardware.



Replace shock on mount and ABS line to axle.



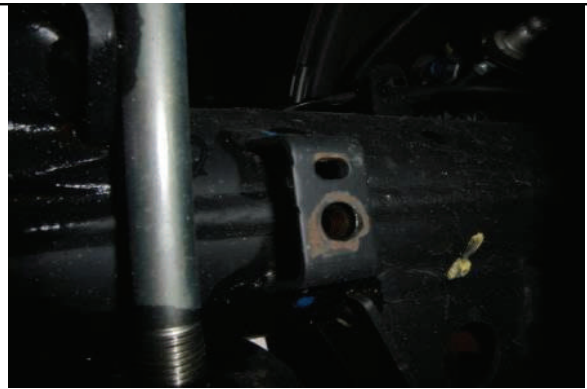
Repeat steps on opposite side and torque when completed.



69-5476 follow these steps in red



Remove brake line bracket bolt from axle tab.



Axle tabs and brackets are different on either side.



Install provided brackets with OE and provided hardware.



Install provided upper shock extension as shown.

Final Checks & Adjustments

Post Installation Warnings: Once the vehicle is lowered to the ground, check all parts which have rubber or urethane components to insure proper torque. Torque wheels to factory specs. Move vehicle backwards and forwards a short distance to allow suspension components to adjust. Turn the front wheels completely left then right and verify adequate tire, wheel, brake line, and ABS wire clearance. Test and inspect steering, brake and suspension components for tightness and proper operation. Inspect brakes hoses and ABS lines for adequate slack at full extension. Failure to perform the post inspection checks may result in vehicle component damage and/or personal injury or death to driver and/or passengers. Test drive vehicle and re-check the torque of all fasteners and re-torque wheels on vehicle. Re-adjust headlamps.

Vehicle Handling Warning: Vehicles with larger tires and wheels will handle differently than stock vehicles. Take time to familiarize yourself with the handling of your vehicle.

Wheel Alignment/Headlamp Adjustment:

It is necessary to have a proper and professional wheel alignment performed by a certified alignment technician. Align the vehicle to factory specifications. It is recommended that your vehicle alignment be checked after any off-road driving. In addition to your vehicle alignment, for your safety and others, it is necessary to check and adjust your vehicle headlamps for proper aim and alignment

Vehicle Re-Torque and Safety Inspection:

Upon completion of all services and adjustments performed on your vehicle, and within 50 miles of driving, check to ensure all fasteners and hardware are properly torqued to specification as noted in the vehicles factory service manual or the torque chart included.

WWW.ReadyLIFT.com

**ReadyLIFT Suspension Inc.
7490 Commercial Way
Henderson, NV 89011
Phone: (702)410-2300
Fax: (702)410-2794
Toll Free: (877)759-9991
Email: Info@ReadyLIFT.com**