



77-23201 2023 Super Duty Dual Steering Stabilizer for DRW

IF your ReadyLIFT® product has a damaged or missing part, please contact customer service directly and a new replacement part will be sent to you immediately. For warranty issues, please return to the place of installation and contact ReadyLIFT.

(877) 759-9991

MON-FRI 7AM-4PM PST

OR

EMAIL: support@readylift-ami.COM

WEBSITE: ReadyLIFT.COM

****Please retain this document in your vehicle at all times.****

Limited Lifetime Warranty

This unique product warranty proves our commitment to the quality and reliability of every product that ReadyLIFT manufactures. The ReadyLIFT product warranty only extends to the original purchaser of any ReadyLIFT product, if it breaks, we will give you a new part. Warranty does not apply to discontinued parts.

Our Limited Lifetime Warranty excludes the following ReadyLIFT items; bushings, bump stops, ball joints, tie rod ends, heim joints and shock absorbers. These parts are subject to wear and are not considered defective when worn. They are warranted for 12 months from the date of purchase for defects in workmanship.

This product warranty is voided if the vehicle is not aligned after kit installation and proper maintenance is routinely done.

Product purchased directly from ReadyLIFT has a 90 day return policy on uninstalled products from the date of purchase (may be subject to restocking fee). Uninstalled product returns must be in the original ReadyLIFT packaging. Please call **(877) 759-9991** to get an RGA# for any return. Customer is responsible for shipping costs back to ReadyLIFT. **Returns without RGA# will be refused.** Contact ReadyLIFT directly about any potentially defective parts prior to removal from vehicle.

ReadyLIFT products are **NOT** intended for off-road abuse. Any damage or failure as a result from off-road abuse voids the warranty of the ReadyLIFT product. ReadyLIFT is **NOT** responsible for any subsequent damages to any related vehicle parts due to misuse, abuse, improper installation, or lack of maintenance. Furthermore, ReadyLIFT reserves the right to change, modify or cancel this warranty without prior notice.



READ INSTRUCTIONS THOROUGHLY AND COMPLETELY BEFORE BEGINNING INSTALLATION.

INSTALLATION BY A CERTIFIED PROFESSIONAL MECHANIC IS HIGHLY RECOMMENDED.

READYLIFT® IS NOT RESPONSIBLE FOR ANY DAMAGE OR FAILURE RESULTING FROM IMPROPER INSTALLATION.

Safety Warning

MISUSE OF THIS PRODUCT COULD LEAD TO INJURY OR DEATH.

Suspension systems or components that enhance the on and off-road performance of your vehicle may cause it to handle differently than it did from the factory. Extreme care must be used to prevent loss of control or vehicle rollover during abrupt maneuvers.

Always operate your vehicle at reduced speeds to ensure your ability to control your vehicle under all driving conditions. Failure to drive safely may result in serious injury or death to driver and passengers.

Driver and passengers must ALWAYS wear your seat belts, avoid quick sharp turns and other sudden maneuvers. ReadyLIFT Suspension does not recommend the combined use of suspension lifts, body lifts, or other lifting devices.

You should never operate your vehicle under the influence of alcohol or drugs.

Constant maintenance is required to keep your vehicle safe. Thoroughly inspect your vehicle before and after every off-road use.

It is the responsibility of the retailer and/or the installer to review all state and local laws, with the end user of this product, related to bumper height laws and the lifting of their vehicle before the purchase and installation of any ReadyLIFT products.

It is the responsibility of the driver/s to check their surrounding area for obstructions, people, and animals before moving the vehicle.

All raised vehicles have increased blind spots; damage, injury and/or death can occur if these instructions are not followed.

Installation Warning

All steps and procedures described in these instructions were performed while the vehicle was properly supported on a two post vehicle lift with safety jacks.

Use caution during all disassembly and assembly steps to insure suspension components are not over extended causing damage to any vehicle components and parts included in this kit.

Included instructions are guidelines only for recommended procedures and are not meant to be definitive. Installer is responsible to insure a safe and controllable vehicle after performing modifications.

ReadyLIFT Suspension recommends the use of an OE Service Manual for model/year of vehicle when disassembly and assembly of factory and related components.

Unless otherwise specified, tighten all bolts and fasteners to standard torque specifications listed within the OE Service Manual.

Suspension components that use rubber or urethane bushings should be tightened with the vehicle at normal ride height. This will prevent premature wear or failure of the bushing and maintain ride comfort.

Larger tire and wheel combinations may increase leverage on suspension, steering, and related components.

Due to payload options and initial ride height variances, the amount of lift is a base figure. Final ride height dimensions may vary in accordance to original vehicle ride height. Always measure the vehicle ride height prior to beginning installation.

BILL OF MATERIALS

COMPONENTS	
DESCRIPTION	QTY
MAIN BODY STABILIZER BRACKET	1
REAR AXLE BRACKET	1
TIE ROD BRACKET DRIVER	1
TIE ROD BRACKET PASSENGER	1
STABILIZER TOP PLATE	1
STEERING STABILIZER	2

HARDWARE	
DESCRIPTION	QTY
05-22 Diff. Mount, Dual Steering Stabilizer	
3/8"-16 X 1-1/4" Hex Head Bolt	2
3/8" Flat Washer Grade 8 YZ	2
23 Diff. Mount, Dual Steering Stabilizer	
M8X1.25mm, 30mm Long Hex Head Bolt	2
M8 Flat Washer Class 10.9 Z	2
Main Body Clamp, Dual Steering Stabilizer	
M10-1.5 x 55mm Hex Head Bolts	4
M10 Flat Washer Grade 8.8 Z	8
M10-1.5 Toplock Nut Grade 10.9 Z	4
Tie Rod Mounts	
3/8" Flat Washer Grade 8 YZ	8
3/8"-16 X 1.5 X 2.50 U-Bolt	4
3/8" Lock Nut	8
Stabilizer Mounts	
M12-1.75 Toplock Nut Grade 10.9 Z	4
M12 Flat Washer Grade 8.8 Z	8
M12-1.75 X 65mm Hex Head Bolt	2
M12-1.75 X 75mm Hex Head Bolt	2



Before starting installation: ReadyLIFT Suspension highly recommends that the installation of this product be performed by a professional mechanic with experience working on and installing suspension products. Professional knowledge and skill will typically yield the best installation results. If you need an installer in your area, please contact ReadyLIFT Suspension Customer Service to find one of our "Pro-Grade" Dealers.

INSTALLATION BY A PROFESSIONAL IS HIGHLY RECOMMENDED.

- A Factory Service Manual for your specific Year / Make / Model is highly recommended for reference during installation.
- All lifted vehicles may require additional driveline modifications and / or balancing.
- A vehicle alignment is REQUIRED after installation of this product.
- Speedometer / Computer recalibration is required if changing +/- 10% from factory tire diameter.
- A vehicle lift or hoist greatly reduces installation time. Installation time estimates are based on an available vehicle hoist.
- Vehicle must be in excellent operating condition. Repair or replace any and all worn or damaged components prior to installation.

ReadyLIFT recommends all steps and procedures described in these instructions be performed while the vehicle is properly supported on a two post vehicle lift with safety jacks.

Otherwise, park vehicle on a clean flat surface and block the rear wheels for safety. Engage the parking brake.

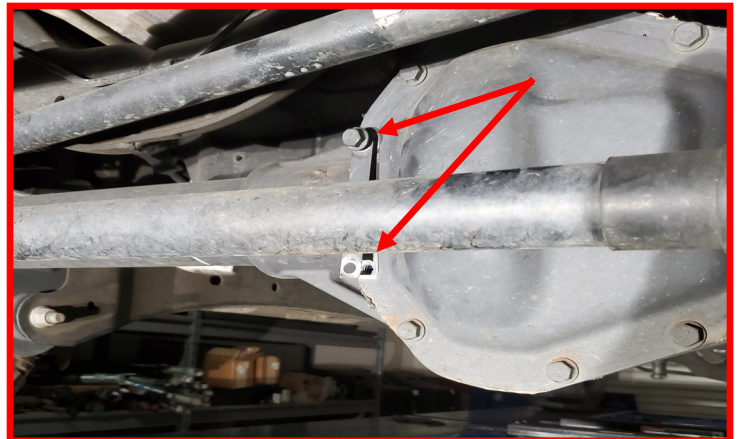
Lock the steering wheel in the straight forward position with the column lock or steering wheel locking device.

Raise the front of the vehicle and support with safety jack stands at each frame rail behind the lower control arms.

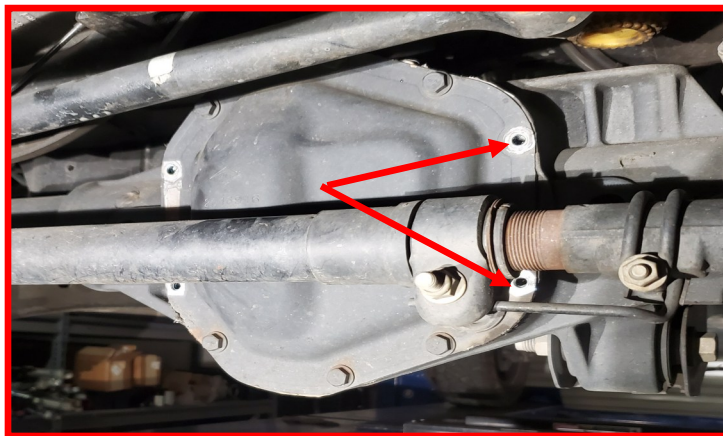
View of the front end before work begins



Remove the (2) middle bolts on the passenger side of the differential cover and retain the factory hardware. Remove the differential ID tag and either place in a secure location (skip next step), or reinstall on the driver side of the differential (see next step).

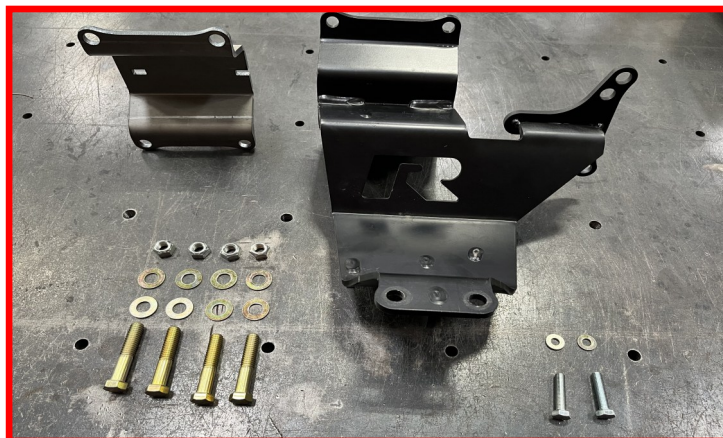


Remove the (2) middle bolts on the driver side differential cover and discard. Install the differential ID tag on the drivers side using the factory hardware.



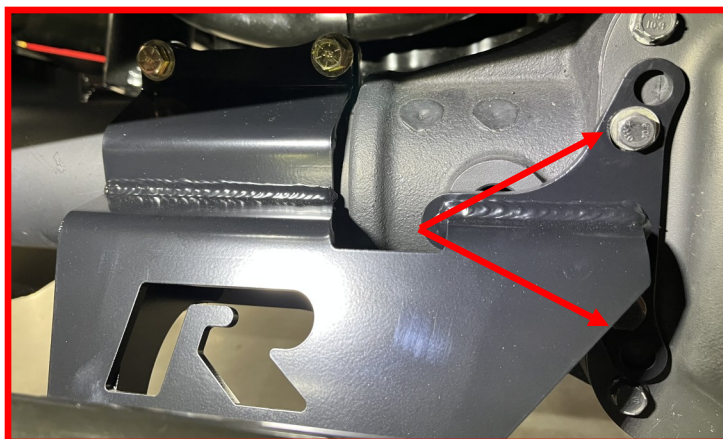
Locate the center stabilizer bracket and rear axle bracket of the dual steering stabilizer kit and the following hardware:

- 2 ea. — M8 x 30mm Hex Head Bolts
- 2 ea. — M8 Washers
- 4 ea. — M10-1.5 x 55mm Hex Head Bolts
- 8 ea. — M10 Flat Washers
- 4 ea. — M10-1.5 Top Lock Nuts



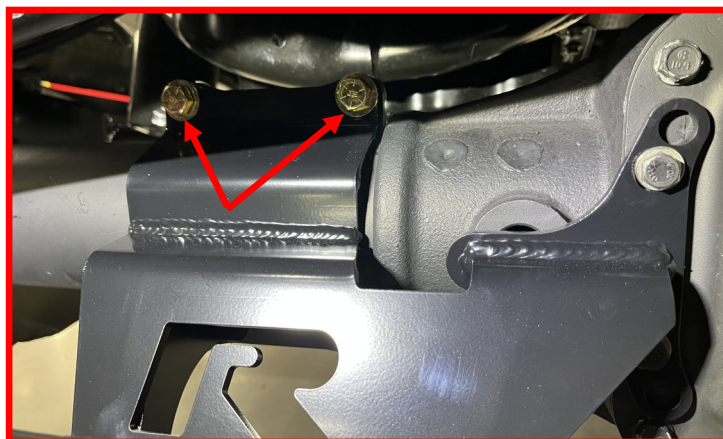
Install the center stabilizer bracket onto the differential using the supplied M8 x 30mm hex head bolts and M8 flat washers. Use the inside holes on the bracket and ensure that the bracket is flush. Tighten bolts enough to secure the bracket to the differential, but do not tighten completely at this time.

For years XX-22, use outside holes and 3/8 x 1 1/4 hardware.



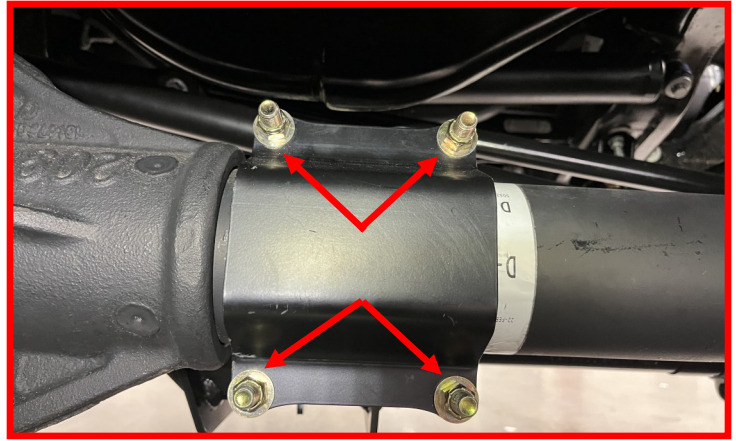
Using the supplied M10-1.5 x 55mm Hex Head Bolts, M10 flat washers and M10-1.5 toplock nuts, fasten the rear axle bracket to the center stabilizer bracket, clamping both around the axle tube.

Note: Only (2) bolts are visible in photo

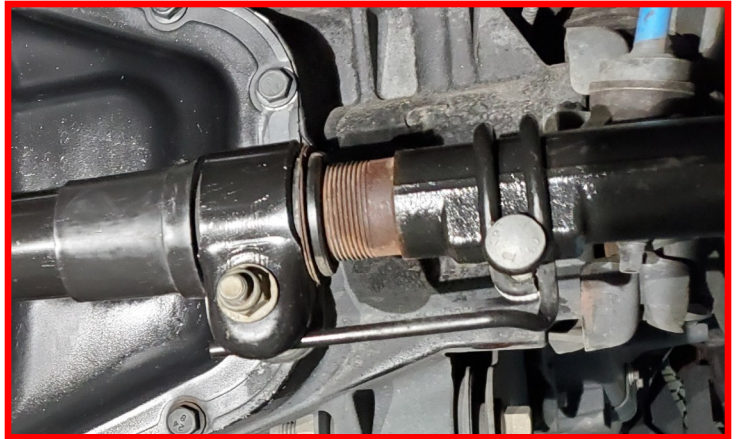


Tighten each of the four M10 nuts and bolts, making sure that the gap between each is approximately equal when tight. Tighten the M8 bolts on the differential.

Torque the M8 bolts to 23ft-lbs.

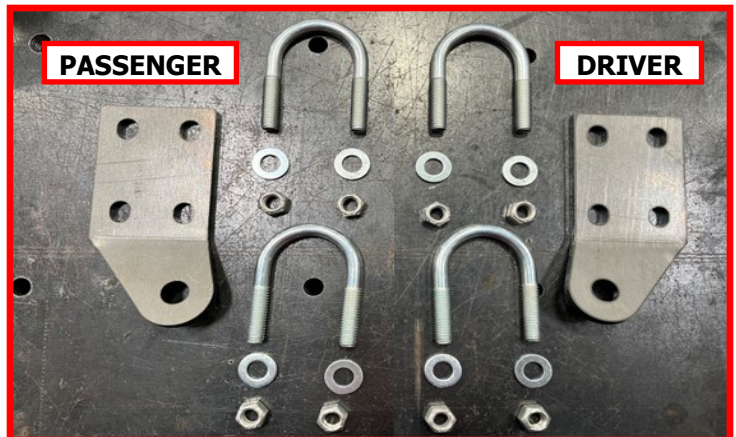


Remove **tie rod retaining clips** from vehicle and discard.



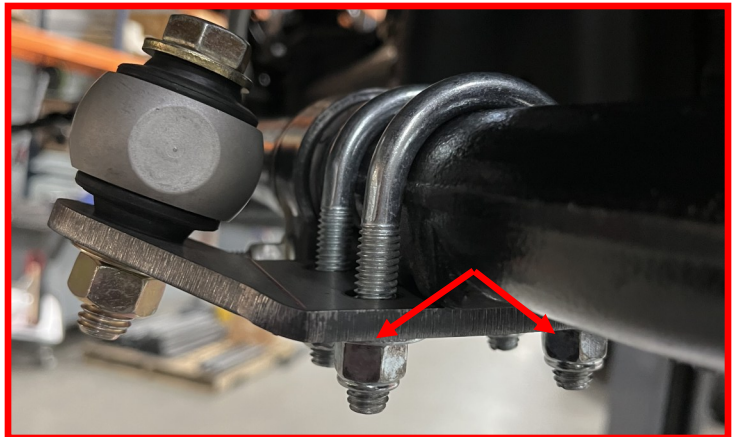
Locate the **driver/passenger tie rod brackets** and the following hardware:

- 4 ea. — 3/8"x 1.5" U-bolts
- 8 ea. — 3/8" Flat Washers
- 8 ea. — 3/8" Toplock Nut



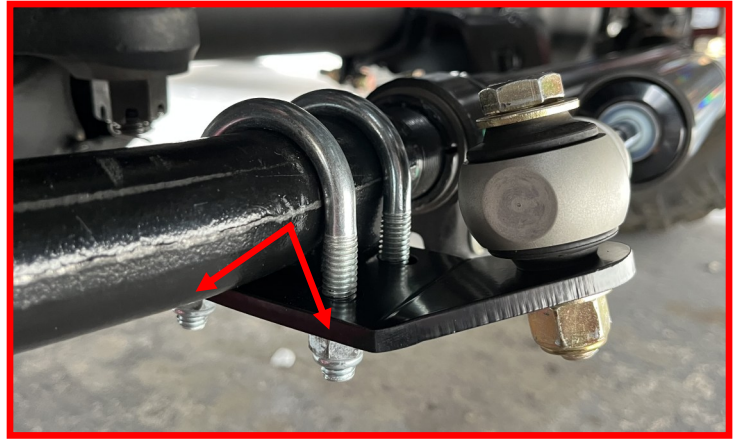
Install the **driver tie rod bracket** using the supplied 3/8" U-bolts, 3/8" flat washers, and 3/8" toplock nuts. Place the plate flush against the flat face on the bottom of the tie rod. Do not fully tighten at this time.

Note: The angled face should be pointing up and towards the front of the vehicle.



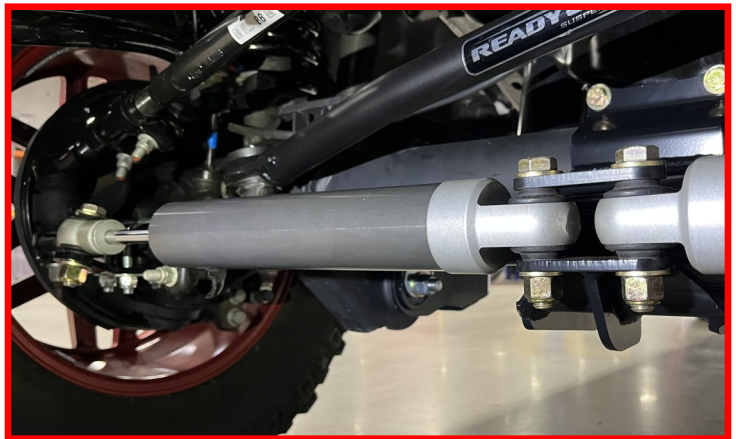
Install the **passenger tie rod bracket** using the supplied 3/8" U-bolts, 3/8" flat washers, and 3/8" toplock nuts. Place the plate flush against the flat face on the bottom of the tie rod. Do not fully tighten at this time.

Note: The angled face should be pointing up and towards the front of the vehicle.



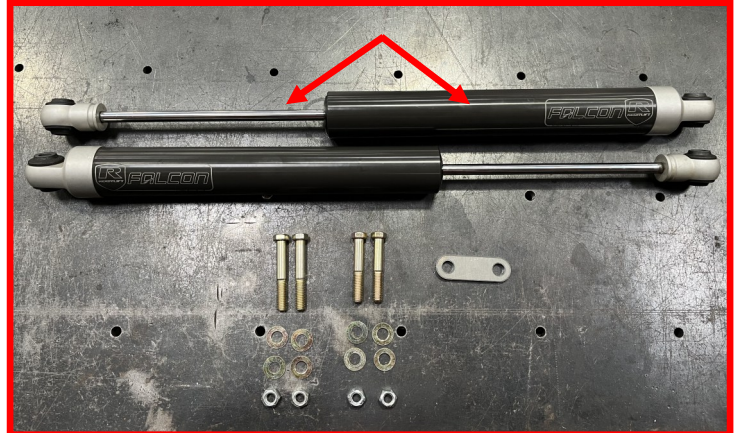
Space each tie rod bracket an equal distance from the center bracket. When in the correct position, tighten the nuts.

Torque 3/8" hardware to 30 ft-lbs.

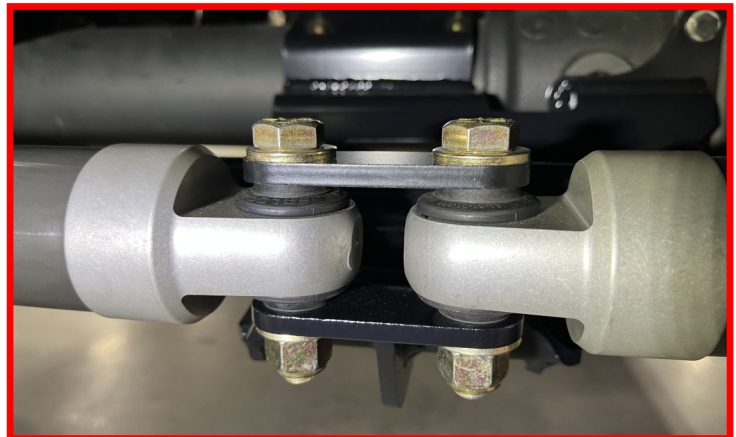


Locate the **steering stabilizers** with the following hardware:

- 1 ea. — Stabilizer Top Plate
- 2 ea. — M12 x 65mm Hex Head Bolts
- 2 ea. — M12 x 75mm Hex Head Bolts
- 8 ea. — M12 Flat Washers
- 4 ea. — M12-1.75 Toplock Nuts

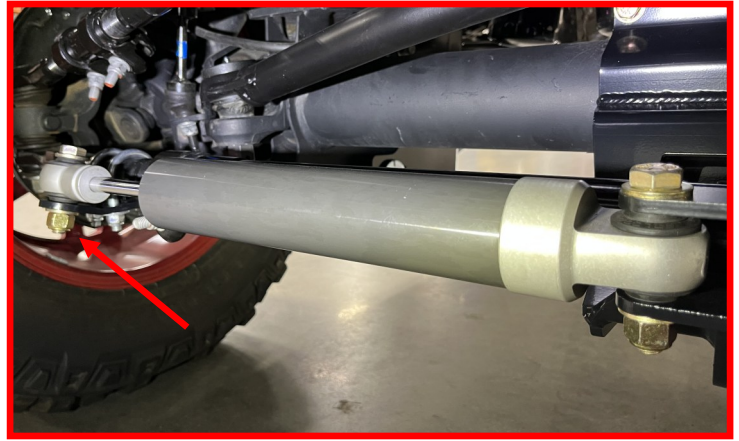


Using the **M12 x 75mm bolts, washers and nuts**, install the body end of the stabilizers onto the center stabilizer bracket. Stabilizer body end should be installed with the **stabilizer top plate** on top and the **center stabilizer bracket** on bottom (as shown in photo). Do not tighten at this time.



Install stabilizer shaft ends to the tie rod brackets using the **M12 x 65mm bolts, washers and nuts**. The shaft end will sit on top of the angled face (as shown in photo). Do not tighten at this time.

Note: If necessary, adjust the brackets so that each stabilizer has an equal amount of shaft showing on each side. Retorque the bracket hardware.



Tighten the center M12 hardware.

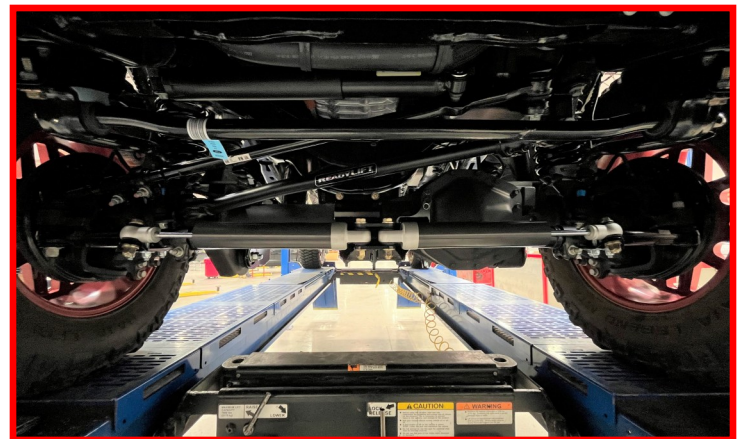
Torque M12 hardware to 80 ft-lbs.

Before tie rod bracket hardware is tightened, ensure the stabilizers are inline with one another and parallel to the ground. Tighten the tie rod M12 hardware.

Torque M12 hardware to 80 ft-lbs.



With all the hardware tightened and torqued to spec, complete a full lock to lock sweep of the steering to ensure there are no clearance issues, binding or bottoming out and/or over extension of the stabilizers.



Use this only as a guide for hardware without a called out torque specification in the instruction manual.

Bolt Torque and ID						
Decimal System			Metric System			
All Torques in Ft. Lbs. Maximums						
Bolt Size	Grade 5	Grade8	Bolt Size	Class 9.8	Class 10.9	Class 12.9
5/16	15	20	M6	5	9	12
3/8	30	45	M8	18	23	27
7/16	45	60	M10	32	45	50
1/2	65	90	M12	55	75	90
9/16	95	130	M14	85	120	145
5/8	135	175	M16	130	165	210
3/4	185	280	M18	170	240	290

1/2-13x1.75 HHCS

Grade 5 Grade 8
(No. of Marks + 2)

D T L X

G = Grade (Bolt Strength)
D = Nominal Diameter (Inches)
T = Thread Count (Threads per Inch)
L = Length (Inches)
X = Description (Hex Head Cap Screw)

M12-1.25x50 HHCS

P

D T L X

P = Property Class (Bolt Strength)
D = Nominal Diameter (Millimeters)
T = Thread Pitch (Thread Width, mm)
L = Length (Millimeters)
X = Description (Hex Head Cap Screw)



FAILURE TO PERFORM THE POST INSPECTION CHECKS MAY RESULT IN VEHICLE COMPONENT DAMAGE AND/OR PERSONAL INJURY OR DEATH TO THE DRIVER AND/OR OTHERS.

Final Checks & Adjustments

Once the vehicle is lowered to the ground, check all parts which have rubber or urethane components to ensure proper torque. Torque lug nuts to the wheel manufacturer specs. Move vehicle backwards and forwards a short distance to allow suspension components to adjust. Turn the front wheels completely left then right and verify adequate tire, wheel, brake line, and ABS wire clearance. Test and inspect steering, brake and suspension components for tightness and proper operation. Inspect brakes hoses and ABS lines for adequate slack at full extension, adjust as necessary.

RECHECK ALL HARDWARE FOR PROPER TORQUE VALUES AFTER 500 MILES, AND THEN PERIODICALLY AT EACH SERVICE INTERVAL THERAFTER.

Vehicle Handling Warning

Increasing the height of your vehicle raises the center of gravity and can affect stability and control. Use caution on turns and when making steering corrections.

Vehicles with larger tires and wheels will handle differently than stock vehicles. Take time to familiarize yourself with the handling of your vehicle.

Wheel Alignment/Headlamp Adjustment

It is necessary to have a proper and professional wheel alignment performed by a certified alignment technician. Align the vehicle to factory specifications. It is recommended that your vehicle alignment be checked after any off-road driving.

In addition to your vehicle alignment, for your safety and others, it is necessary to check and adjust your vehicle headlamps for proper aim and alignment. If the vehicle is equipped with active or passive safety/collision monitoring and/or avoidance systems including, but not limited to, camera- or radar-based systems, check and adjust your vehicle's systems for proper aim and function.