

READYLIFT[®]

SUSPENSIONS

77-25210 2011-UP F250/350 Dual Steering Stabilizer

IF your ReadyLIFT[®] product has a damaged or missing part, please contact customer service directly and a new replacement part will be sent to you immediately. For warranty issues, please return to the place of installation and contact ReadyLIFT.

(877) 759-9991

MON-FRI 7AM-4PM PST

OR

EMAIL: support@readylift-ami.COM

WEBSITE: ReadyLIFT.COM

****Please retain this document in your vehicle at all times.****

Limited Lifetime Warranty

This unique product warranty proves our commitment to the quality and reliability of every product that ReadyLIFT manufactures. The ReadyLIFT product warranty only extends to the original purchaser of any ReadyLIFT product, if it breaks, we will give you a new part. Warranty does not apply to discontinued parts.

Our Limited Lifetime Warranty excludes the following ReadyLIFT items; bushings, bump stops, ball joints, tie rod ends, heim joints and shock absorbers. These parts are subject to wear and are not considered defective when worn. They are warranted for 12 months from the date of purchase for defects in workmanship.

This product warranty is voided if the vehicle is not aligned after kit installation and proper maintenance is routinely done.

Product purchased directly from ReadyLIFT has a 90 day return policy on uninstalled products from the date of purchase (may be subject to restocking fee). Uninstalled product returns must be in the original ReadyLIFT packaging. Please call **(877) 759-9991** to get an RGA# for any return. Customer is responsible for shipping costs back to ReadyLIFT. **Returns without RGA# will be refused.** Contact ReadyLIFT directly about any potentially defective parts prior to removal from vehicle.

ReadyLIFT products are **NOT** intended for off-road abuse. Any damage or failure as a result from off-road abuse voids the warranty of the ReadyLIFT product. ReadyLIFT is **NOT** responsible for any subsequent damages to any related vehicle parts due to misuse, abuse, improper installation, or lack of maintenance. Furthermore, ReadyLIFT reserves the right to change, modify or cancel this warranty without prior notice.



READ INSTRUCTIONS THOROUGHLY AND COMPLETELY BEFORE BEGINNING INSTALLATION.

INSTALLATION BY A CERTIFIED PROFESSIONAL MECHANIC IS HIGHLY RECOMMENDED.

READYLIFT® IS NOT RESPONSIBLE FOR ANY DAMAGE OR FAILURE RESULTING FROM IMPROPER INSTALLATION.

Safety Warning

MISUSE OF THIS PRODUCT COULD LEAD TO INJURY OR DEATH.

Suspension systems or components that enhance the on and off-road performance of your vehicle may cause it to handle differently than it did from the factory. Extreme care must be used to prevent loss of control or vehicle rollover during abrupt maneuvers.

Always operate your vehicle at reduced speeds to ensure your ability to control your vehicle under all driving conditions. Failure to drive safely may result in serious injury or death to driver and passengers.

Driver and passengers must ALWAYS wear your seat belts, avoid quick sharp turns and other sudden maneuvers. ReadyLIFT Suspension does not recommend the combined use of suspension lifts, body lifts, or other lifting devices.

You should never operate your vehicle under the influence of alcohol or drugs.

Constant maintenance is required to keep your vehicle safe. Thoroughly inspect your vehicle before and after every off-road use.

It is the responsibility of the retailer and/or the installer to review all state and local laws, with the end user of this product, related to bumper height laws and the lifting of their vehicle before the purchase and installation of any ReadyLIFT products.

It is the responsibility of the driver/s to check their surrounding area for obstructions, people, and animals before moving the vehicle.

All raised vehicles have increased blind spots; damage, injury and/or death can occur if these instructions are not followed.

Installation Warning

All steps and procedures described in these instructions were performed while the vehicle was properly supported on a two post vehicle lift with safety jacks.

Use caution during all disassembly and assembly steps to insure suspension components are not over extended causing damage to any vehicle components and parts included in this kit.

Included instructions are guidelines only for recommended procedures and are not meant to be definitive. Installer is responsible to insure a safe and controllable vehicle after performing modifications.

ReadyLIFT Suspension recommends the use of an OE Service Manual for model/year of vehicle when disassembly and assembly of factory and related components.

Unless otherwise specified, tighten all bolts and fasteners to standard torque specifications listed within the OE Service Manual.

Suspension components that use rubber or urethane bushings should be tightened with the vehicle at normal ride height. This will prevent premature wear or failure of the bushing and maintain ride comfort.

Larger tire and wheel combinations may increase leverage on suspension, steering, and related components.

Due to payload options and initial ride height variances, the amount of lift is a base figure. Final ride height dimensions may vary in accordance to original vehicle ride height. Always measure the vehicle ride height prior to beginning installation.

BILL OF MATERIALS

COMPONENTS	
DESCRIPTION	QTY
Center Stabilizer Bracket	1
Rear Axle Clam Shell	1
Driver Side Drag Link Bracket	1
Passenger Side Drag Link Bracket	1
Stabilizer Center Link Plate	1
Falcon Stabilizer	2

HARDWARE	
DESCRIPTION	QTY
3/8"-16 x 1-1/4" Hex Head Bolt,	2
3/8" Flat Washer	4
7/16"- 14 x 2.0" Hex Head Bolt	4
7/16" - 14 Hex Nut	4
7/16" - 14 Flat Washer	8
Carriage Bolt, M10 x 1.5 mm x 80 mm	2
M10 x 1.5mm Lock Nut	2
M10 Flat Washer	2
M8 x 1.25 x 75mm Hex Head Bolt	2
M8 x 1.25mm Lock Nut	2
M8 x 1.25mm Flat Washer	4
M12 x 1.75mm x 65 mm Hex Head Bolt	2
M12 x 1.75mm x 75 mm Hex Head Bolt	2
M12 x 1.75 mm Lock Nut	4
M12 Flat Washer	8



Before starting installation: ReadyLIFT Suspension highly recommends that the installation of this product be performed by a professional mechanic with experience working on and installing suspension products. Professional knowledge and skill will typically yield the best installation results. If you need an installer in your area, please contact ReadyLIFT Suspension Customer Service to find one of our "Pro-Grade" Dealers.

INSTALLATION BY A PROFESSIONAL IS HIGHLY RECOMMENDED.

- A Factory Service Manual for your specific Year / Make / Model is highly recommended for reference during installation.
- All lifted vehicles may require additional driveline modifications and / or balancing.
- A vehicle alignment is REQUIRED after installation of this product.
- Speedometer / Computer recalibration is required if changing +/- 10% from factory tire diameter.
- A vehicle lift or hoist greatly reduces installation time. Installation time estimates are based on an available vehicle hoist.
- Vehicle must be in excellent operating condition. Repair or replace any and all worn or damaged components prior to installation.

*****Parts shown in red for picture clarification only*****

ReadyLIFT recommends all steps and procedures described in these instructions be performed while the vehicle is properly supported on a two post vehicle lift with safety jacks.

Otherwise, park vehicle on a clean flat surface and block the rear wheels for safety. Engage the parking brake.

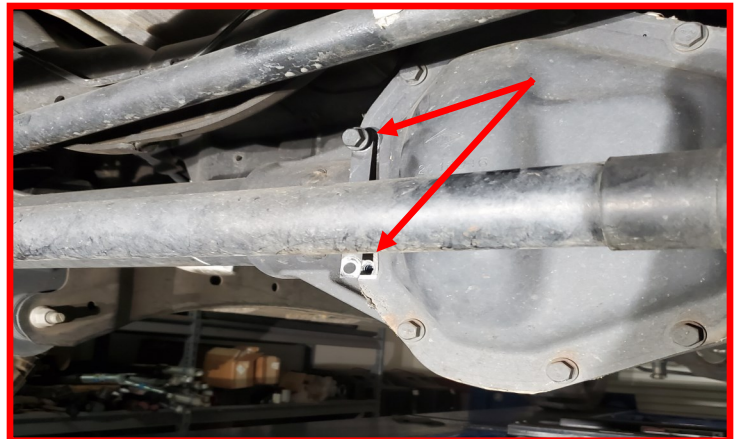
Lock the steering wheel in the straight forward position with the column lock or steering wheel locking device.

Raise the front of the vehicle and support with safety jack stands at each frame rail behind the lower control arms.

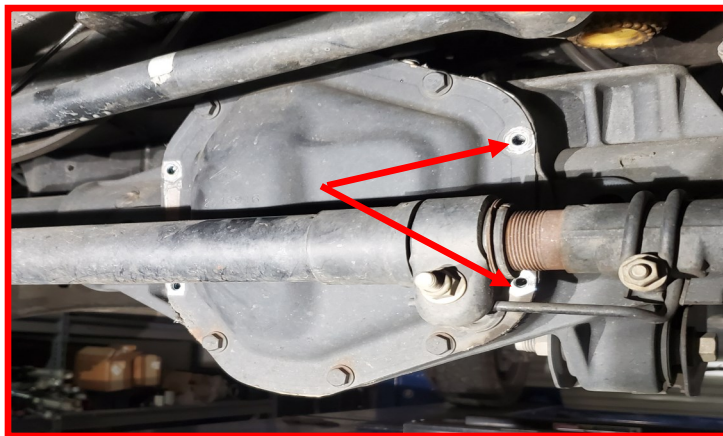
View of the front end before work begins



Remove the (2) middle bolts on the passenger side of the differential cover and retain the factory hardware. Save the differential ID tag for the step below.

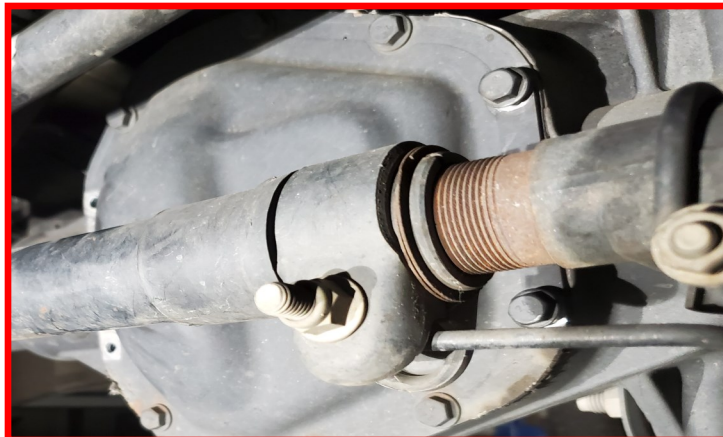


Remove the (2) middle bolts on the driver side differential cover and discard. Install the differential ID tag on the drivers side using the factory hardware.



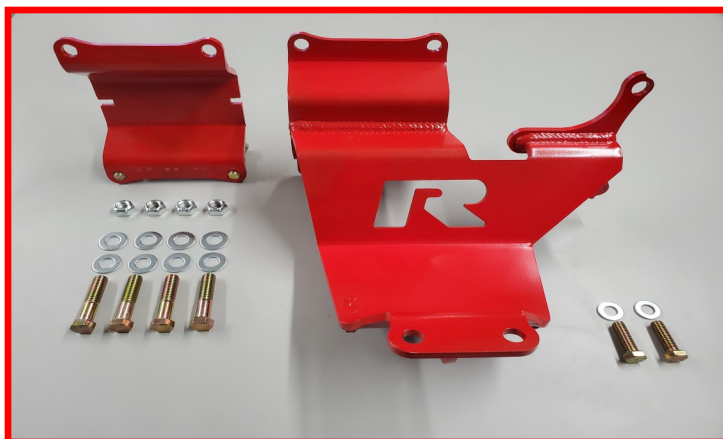
Differential ID tag shown installed on the drivers side using the (2) factory bolts.

Note: If you choose to omit this step place the differential ID tag in the glove box or another secure location.

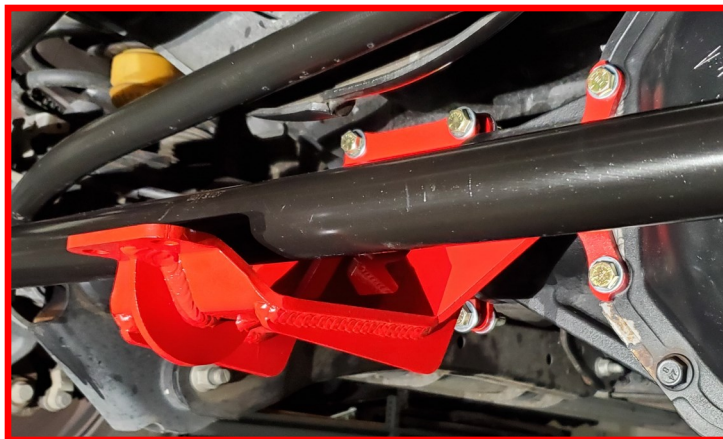


Locate the center stabilizer bracket and rear axle clam shell of the dual steering stabilizer kit and the following hardware:

- 2 ea. — 3/8" x 1-1/4" Hex Head Bolts
- 2 ea. — 3/8" Washers
- 4 ea. — 7/16"x 2" long Hex Head Bolts
- 8 ea. — 7/16" Washers
- 4 ea. — 7/16" Top Lock Nuts

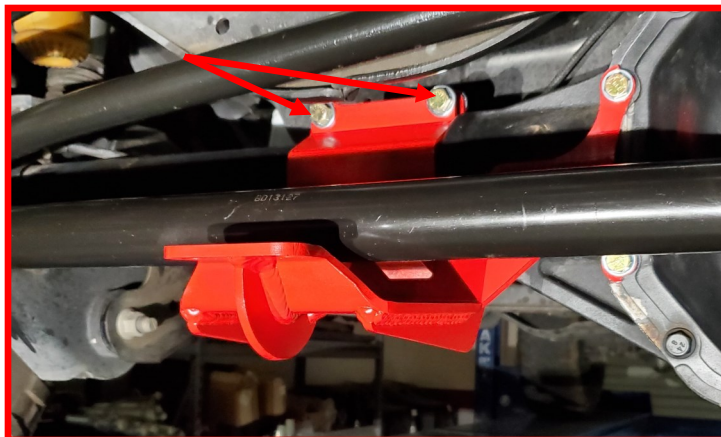


Install the center stabilizer bracket using the supplied 3/8" x 1-1/4" hex head bolts and 3/8" flat washers. Tighten bolts enough to secure the main body to the passenger side of the differential but do not tighten completely at this time.



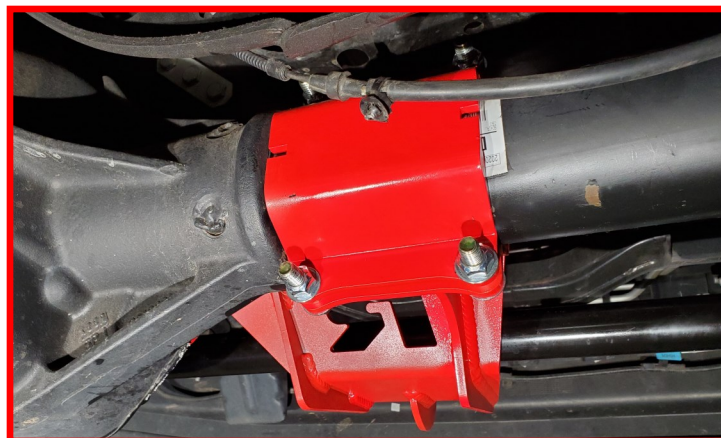
Using the supplied 7/16"x 2" long Hex Head Bolts, 7/16" flat washers and 7/16" top lock nuts, install the rear axle clam shell to the center stabilizer bracket, clamping both around the axle tube.

Note: Only (2) bolts are visible in photo



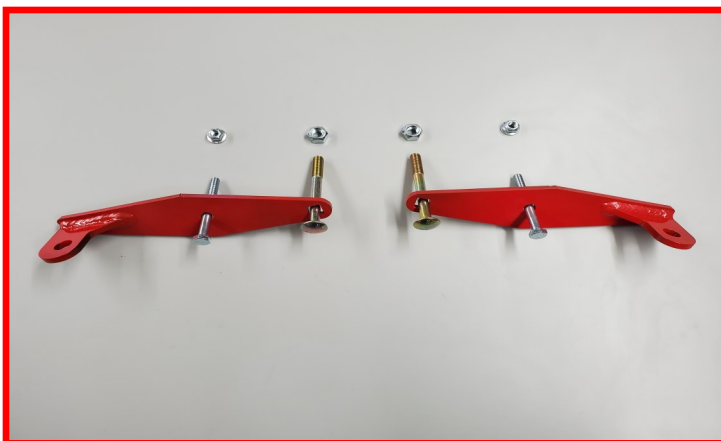
Tighten each of the four nuts and bolts making sure that the gap between each is approximately equal when tight.

Torque 3/8" hardware to 33ft-lbs.



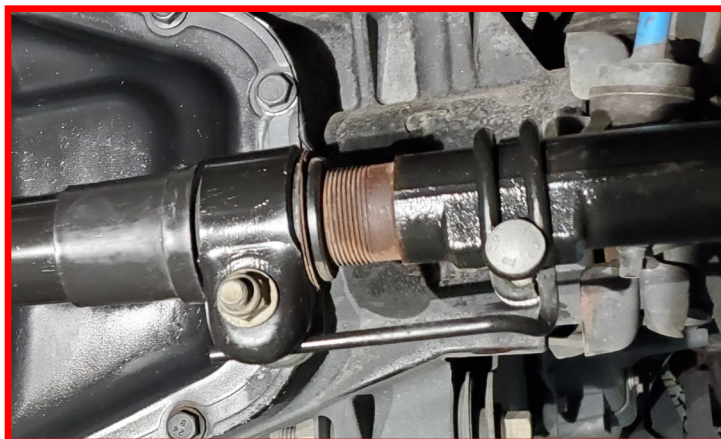
Locate the Driver and Passenger side drag link brackets and the following hardware:

- (2) M8 - 1.25 x 75mm Hex Head Bolts
- (2) M8 - 1.25 Top Lock Nuts
- (4) M8 Flat Washer
- (2) M10 - 1.5 x 90mm Carriage Bolts
- (2) M10 - 1.5mm Top Lock Nuts
- (2) M10 Flat Washer



Note the orientation of the U-shaped clip on the rearward side, it will need to be re-installed. Install the Driver and Passenger side shock mounts.

The hardware bolt threads should be to the rear of the vehicle to prevent damage to the shock boot. (Bolt heads to the front of the vehicle and threads to the rear of the vehicle.)



Install **driver side drag link bracket** using the supplied M8 x 75mm hex bolts, M8 lock nuts, M10 x 90mm carriage bolts and M10 lock nuts. Do not fully tighten at this time.



Install **passenger side drag link bracket** using the supplied M8 x 75mm hex bolts, M8 lock nuts, M10 x 90mm carriage bolts and M10 lock nuts. Do not fully tighten at this time.



Note: Ensure the hardware is installed through the bracket followed by the drag link (Front to rear).

Locate the **steering dampers** with the following hardware:

- (2) M12 - 1.75 x 75mm Hex Head Bolts
- (2) M12 - 1.75 x 65mm Hex Head Bolts
- (4) M12 - 1.75 Top Lock Nuts
- (8) M12 Flat Washers
- (1) Stabilizer Center Link Plate
- (2) Steering Dampeners



Using the M12 x 75mm bolts, washers and nut, install the passenger stabilizer. Stabilizer body bushing should be installed with the **stabilizer center link plate** on top and the **center stabilizer bracket** on bottom of the stabilizer bushing (as shown in photo).

Install stabilizer shaft bushing to the drag link mount using the M12 x 65mm bolt, washers and nut. Do not tighten at this time.



Using the M12 x 75mm bolts, washers and nut, install the driver stabilizer. Stabilizer body bushing should be installed with the **stabilizer center link plate** on top and the **center stabilizer bracket** on bottom of the stabilizer bushing (as shown in photo).

Install stabilizer shaft bushing to the drag link mount using the M12 x 65mm bolt, washers and nut.



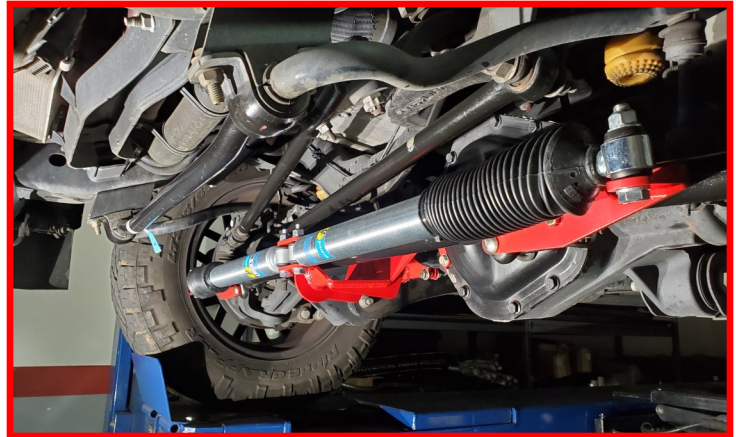
Tighten all M12 hardware.

Torque M12 hardware to 50ft-lbs.

Before drag link hardware is tightened, ensure the stabilizers are inline with one another and parallel to the ground.

Torque M10 hardware to 35ft-lbs.

Torque M8 hardware to 15ft-lbs.



With all the hardware tightened and torqued to spec, complete a full lock to lock sweep of the steering to check in-spect the stabilizers to ensure adequate clearance on hardware and other hard surfaces.





FAILURE TO PERFORM THE POST INSPECTION CHECKS MAY RESULT IN VEHICLE COMPONENT DAMAGE AND/OR PERSONAL INJURY OR DEATH TO THE DRIVER AND/OR OTHERS.

Final Checks & Adjustments

Once the vehicle is lowered to the ground, check all parts which have rubber or urethane components to ensure proper torque. Torque lug nuts to the wheel manufacturer specs. Move vehicle backwards and forwards a short distance to allow suspension components to adjust. Turn the front wheels completely left then right and verify adequate tire, wheel, brake line, and ABS wire clearance. Test and inspect steering, brake and suspension components for tightness and proper operation. Inspect brakes hoses and ABS lines for adequate slack at full extension, adjust as necessary.

RECHECK ALL HARDWARE FOR PROPER TORQUE VALUES AFTER 500 MILES, AND THEN PERIODICALLY AT EACH SERVICE INTERVAL THERAFTER.

Vehicle Handling Warning

Increasing the height of your vehicle raises the center of gravity and can affect stability and control. Use caution on turns and when making steering corrections.

Vehicles with larger tires and wheels will handle differently than stock vehicles. Take time to familiarize yourself with the handling of your vehicle.

Wheel Alignment/Headlamp Adjustment

It is necessary to have a proper and professional wheel alignment performed by a certified alignment technician. Align the vehicle to factory specifications. It is recommended that your vehicle alignment be checked after any off-road driving.

In addition to your vehicle alignment, for your safety and others, it is necessary to check and adjust your vehicle headlamps for proper aim and alignment. If the vehicle is equipped with active or passive safety/collision monitoring and/or avoidance systems including, but not limited to, camera- or radar-based systems, check and adjust your vehicle's systems for proper aim and function.