



## Installation Instructions 77-6800

**IF YOUR ReadyLIFT® SUSPENSION PRODUCT IS MISSING A PART OR HAS A DAMAGED PART, PLEASE CONTACT CUSTOMER SERVICE DIRECTLY.**

**A NEW REPLACEMENT PART WILL BE SENT TO YOU IMMEDIATELY**

**(877) 759-9991**

**MON-FRI 7AM-5PM PST**

**OR**

**EMAIL: [INFO@ReadyLIFT.COM](mailto:INFO@ReadyLIFT.COM)**

**WEBSITE: [www.ReadyLIFT.COM](http://www.ReadyLIFT.COM)**

**\*\*Please retain this document in your vehicle at all times\*\***

### **ReadyLIFT® Suspension Limited Warranty**

#### **Limited Warranty details for ReadyLIFT® Suspension.**

The ReadyLIFT® Suspension Limited Lifetime Warranty covers defective materials or defective workmanship for the life of the product to the original purchaser and only on the original vehicle which the product was installed. The ReadyLIFT® Suspension Limited Lifetime Warranty excludes the following wearable items: bushings, bushing sleeves, bump stops, top-out stops, spherical bearings (uniballs), heim joints (rod ends), and misalignment spacers (upper control arm and steering). These items are considered wear items and are covered for 90 days from the original purchase date, therefore these items will not be considered defective because of wear. Wear is subject to use of product, use of vehicle, driving conditions, weather conditions, cleanliness of product/components, and maintenance/up-keep. The degree of wear and overall lifetime of each wear item is subject to afore mentioned conditions and circumstances. ReadyLIFT® Suspension will only warranty wear items in the case of workmanship and defects for the period of 90 days following the date of purchase. Please note that all products should be inspected by a professional technician before installing any part/kit onto the vehicle. In addition, all products should be installed by a qualified technician. Please contact ReadyLIFT® Suspension if there is any question as to the quality of workmanship of each component or its installation procedure. Contact ReadyLIFT® Suspension directly about any potentially defective parts prior to removing any parts from the vehicle. If it appears that the part is warrantable, you will be given an RGA number and asked to return the part freight prepaid. If the part is found to be warrantable, at the sole discretion of ReadyLIFT® Suspension, it will be repaired or replaced and returned to you. **The limited warranty expressed by ReadyLIFT® Suspension supersedes that of any claims made by authorized and unauthorized dealers of ReadyLIFT® Suspension products.**

**[www.ReadyLIFT.com](http://www.ReadyLIFT.com)**



## Installation Instructions 77-6800

**Please read Instructions thoroughly and completely before beginning installation.  
Installation by a certified mechanic is recommended.**

**ReadyLIFT® Suspension is NOT responsible for any damage or failure resulting from improper installation.**

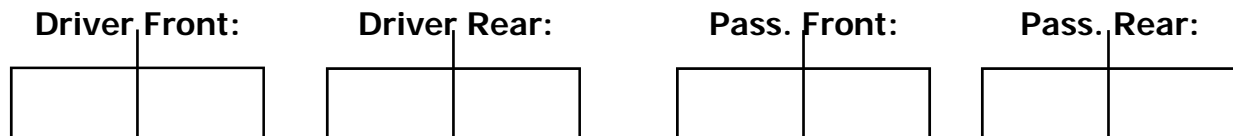
**Safety Warning:** Suspension systems or components that enhance the on and off-road performance of your vehicle may cause it to handle differently than it did from the factory. Extreme care must be used to prevent loss of control or vehicle roll-over during abrupt maneuvers. Always operate your vehicle at reduced speeds to ensure your ability to control your vehicle under all driving conditions. Failure to drive safely may result in serious injury or death to driver and passengers. Driver and passengers must ALWAYS wear your seat belts, avoid quick sharp turns and other sudden maneuvers. ReadyLIFT® Suspension does not recommend the combined use of suspension lifts, body lifts, or other lifting devices. You should never operate your vehicle under the influence of alcohol or drugs. Constant maintenance is required to keep your vehicle safe. Thoroughly inspect your vehicle before and after every off-road use. It is the responsibility of the retailer and/or the installer to review all state and local laws, with the end user of this product, related to bumper height laws and the lifting of their vehicle before the purchase and installation of any ReadyLIFT® products. It is the responsibility of the driver/s to check their surrounding area for obstructions, people, and animals before moving the vehicle. All raised vehicles have increased blind spots and damage, injury and/or death can occur if these instructions are not followed.

**Installation Warning:** All steps and procedures described in these instructions were performed while the vehicle was properly supported on a two post vehicle lift with safety jacks. Use caution during all disassembly and assembly steps to insure suspension components are not over extended causing damage to any vehicle components and parts included in this kit. Included instructions are guidelines only for recommended procedures and are not meant to be definitive. Installer is responsible to insure a safe and controllable vehicle after performing modifications.

ReadyLIFT® Off Road Suspension recommends the use of an OE Service Manual for model/year of vehicle when disassembly and assembly of factory and related components. Unless otherwise specified, tighten all bolts and fasteners to standard torque specifications listed within the OE Service Manual, or as referenced in the torque specification list provided in these instructions.

Suspension components that use rubber or urethane bushings should be tightened with the vehicle at normal ride height. This will prevent premature wear or failure of the bushing and maintain ride comfort. Larger tire and wheel combinations may increase leverage on suspension, steering, and related components. Due to payload options and initial ride height variances, the amount of lift is a base figure. Final ride height dimensions may vary in accordance to original vehicle ride height. Always measure the vehicle ride height prior to beginning installation.

### Vehicle ride height chart



Bolt Size Millimeters	Torque Specs in FT/LB	
	Metric Grade 8.8	Metric Grade 10.9
6mm	6	8
8mm	16	22
10mm	40	45
12mm	54	70
14mm	89	117
16mm	132	175
18mm	182	236

Bolt Size SAE	Torque Specs in FT/LB	
	Grade 5	Grade 8
5/16	15	20
3/8	30	35
7/16	45	60
1/2	65	90
9/16	95	130
5/8	135	175
3/4	185	280



## Installation Instructions 77-6800

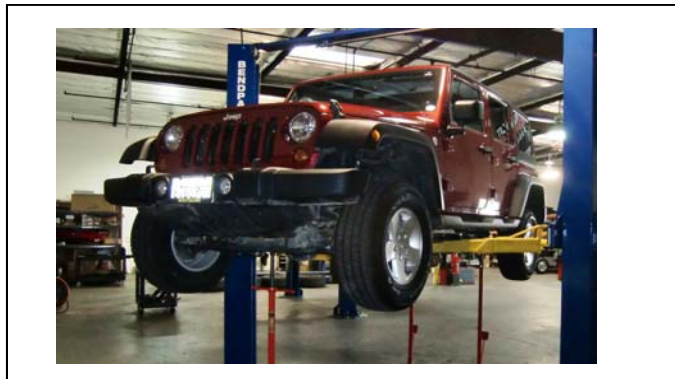
# Bill of Materials

Description	Qty	Description	Qty
Right front inner axle bracket	1	M12-1.75 x 80mm Hex machined bolt	1
Right front outer axle bracket	1	3/8"-16 x 1" Hex machined bolt	4
Front axle bracket to swaybar	1	9/16" x 18 x 3" Hex machined bolt	1
Steering adapter sleeve	1	3/8"-16 stover nut	6
Steering spacer .500" id x 1.25" od x .393" h	1	3/8" flat washer	10
Track bar spacer .630" id x 1.00" od x 1.50" h	1	1/2" flat washer	4
U-bolt 3/8"-16 x 2.50"W x 3.5"L	1	1/2"-20 stover nut	2
JK drag link: Right hand drive	1	9/16"-18 stover nut	1
M14-1.5 flange nut	1	1/2"-20 x 1.5"L Hex machined bolt	2
M12-1.75 stover nut	1		

The Bill of Materials represents the component contents of this kit. All hardware is of the highest grade and the components are manufactured to exacting specifications for a trouble free installation.



1. Place the vehicle on level ground.



2. Lift the vehicle, supporting both the frame and front axle.



3. Remove the front wheels.

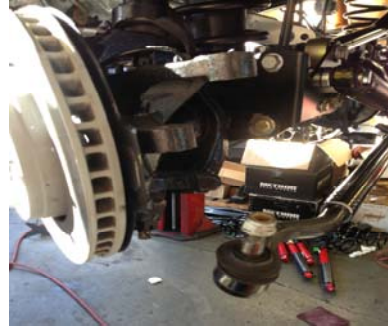


4. Remove the steering drag link from the axle, then loosen the coupler.

## Installation Instructions 77-6800



5. Remove the steering damper from the axle.



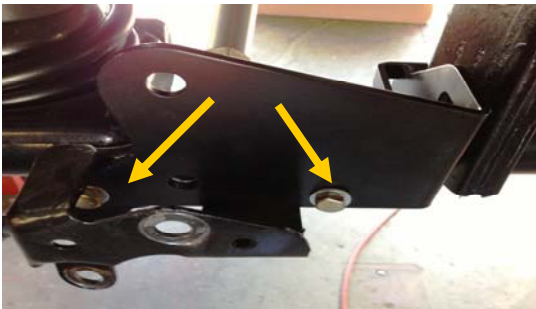
6. Remove the tie rod from the passenger side.



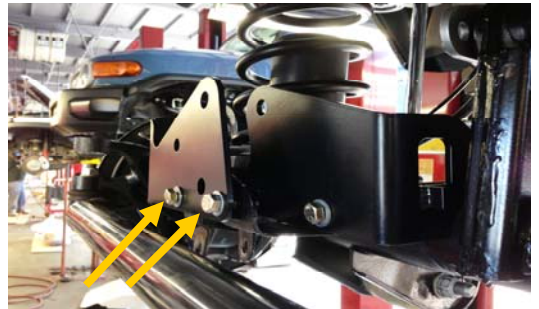
7. Remove the sway bar end links from the axle.



8. Remove the track bar from the axle side.



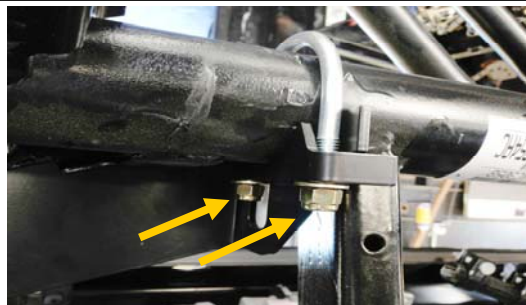
9. Install the passenger side front axle bracket to the inside of the pocket. Leave the hardware loose.



10. Install the passenger side front axle bracket to the outside of the pocket.



11. Insert the spacer in between the both brackets. Then tighten down all installed hardware and washers.



12. Install the u-bolt over the axle and into the bracket. Using the hardware provided torque down to 22 ft. lbs.

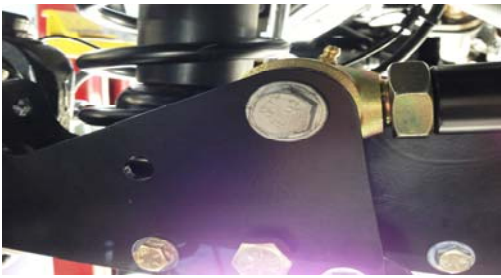
## Installation Instructions 77-6800

**Attention:** If you are using Extended length Sway Bar End link's the driver side bracket will not be used. If Stock Length Sway Bar End links will be used continue instructions with step 14.

13.

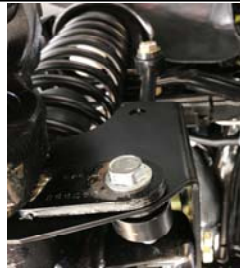


14. Install drivers side sway bar end ink extension bracket



Reattach the track bar to the bracket Using the OEM Hardware. You may need to use a ratchet strap to pull the axle over. Once track bar is installed, torque hardware.

15.



If using Extended length end links re-attach to stock mounting location.



If using Stock lengths End links you would attach the end link to the new mounting hole on the Supplied Bracket.

16. Re-install the sway bar end links.



Install the steering damper to the axle on passenger side. Add the spacer between mounting bracket and the damper with supplied hardware.

17.



18. Installing the high steer drag link.



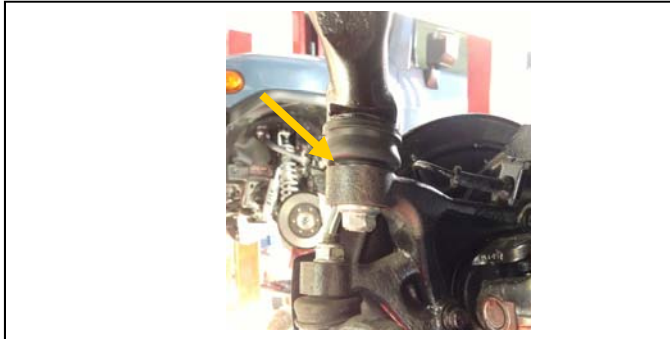
19. Drill out the draglink mounting location on the axle to a 7/8" hole.



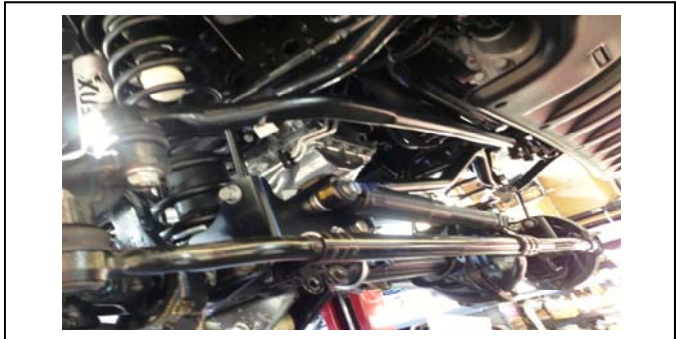
20. After the hole is drilled out insert the bung into the hole.



## Installation Instructions 77-6800



21. Install the drag link to the axle and torque down.



22. Reinstall the wheels onto the vehicle and set back onto the ground.



23. With the vehicle back on the ground, check the steering wheel to ensure it is aligned straight with the wheels.



24. Adjust the steering drag link until it is straight with the vehicles wheels if needed. Then tighten down the adjustment coupler.

### Final Checks & Adjustments

**Post Installation Warnings:** Once the vehicle is lowered to the ground, check all parts which have rubber or urethane components to insure proper torque. Torque wheels to factory specs. Move vehicle backwards and forwards a short distance to allow suspension components to adjust. Turn the front wheels completely left then right and verify adequate tire, wheel, brake line, and ABS wire clearance. Test and inspect steering, brake and suspension components for tightness and proper operation. Inspect brake hoses and ABS lines for adequate slack at full extension. Failure to perform the post inspection checks may result in vehicle component damage and/or personal injury or death to driver and/or passengers. Test drive vehicle and re-check the torque of all fasteners and re-torque wheels on vehicle. Re-adjust headlamps.

**Vehicle Handling Warning:** Vehicles with larger tires and wheels will handle differently than stock vehicles. Take time to familiarize yourself with the handling of your vehicle.

### Wheel Alignment/Headlamp Adjustment

**It is necessary to have a proper and professional wheel alignment performed by a certified alignment technician. Align the vehicle to factory specifications. It is recommended that your vehicle alignment be checked after any off-road driving. In addition to your vehicle alignment, for your safety and others, it is necessary to check and adjust your vehicle headlamps for proper aim and alignment**

### Vehicle Re-Torque and Safety Inspection

Upon completion of all services and adjustments performed on your vehicle, and within 50 miles of driving, check to ensure all fasteners and hardware are properly torqued to specification as noted in the vehicles factory service manual or the torque chart included.